



Spring/Summer 2026



# Welcome to WHITPAIN TOWNSHIP

*Montgomery County, Pennsylvania*

## Welcome Spring!

*Mermaid Park*



*Dog Park*



*Pickleball Courts*



*Get out and enjoy all  
Whitpain Township  
has to offer!*

### INSIDE THIS ISSUE

Manager's Message .....	3
Contact Information.....	4
Real Estate Tax Millage and Sewer Rates Unchanged .....	5
Traffic Improvements Coming to School Road.....	6
Cooking Safety .....	7
Shade Tree Commission .....	8
Stormwater for Residents .....	8
Whitpain Township Sustainable Property .....	10
A Banner Year for Park Projects.....	11



PARKS & RECREATION .....	12-28
Discount Tickets.....	13
Special Events .....	13-15
Workshops .....	16
Youth Programs .....	18-25
Youth Tennis.....	26
Adult Tennis .....	26
Youth Pickleball .....	27
Adult Pickleball .....	27
Adult Programs .....	28
Whitpain Dog Park.....	30

**Learn about fun activities and more at [www.WhitpainRec.com](http://www.WhitpainRec.com).**  
*Visit our website at [www.whitpaintownship.org](http://www.whitpaintownship.org) and sign up for the Whitpain Wire*



DESIGN • BUILD • MAINTAIN



***For all your outdoor living spaces!***

Garden care

Masonry

Outdoor kitchens

Fireplaces

Horticultural services

Ponds & water features

Rain gardens & bioswales

Green roofs

215-247-2992 • DavidBrothers.com • 610-584-1550

**DO YOU HAVE A GOOD  
GRASP OF YOUR  
FINANCIAL FUTURE?**

Get a complimentary Financial Analysis from a multi-Generational team with over 40 years of Financial Planning and Investment experience.



**Michael Patitucci III**  
Financial Advisor



**Michael Patitucci** | Executive  
VP / Wealth Management,  
Financial Advisor

**PATITUCCI WEALTH MANAGEMENT GROUP**

Janney Montgomery Scott LLC, 1767 Sentry  
Parkway West, Suite 110, Blue Bell, PA 19422  
[www.Patitucci.com](http://www.Patitucci.com) | 215.619.3915



*For more information about Janney, please see Janney's Relationship Summary (Form CRS) on [www.janney.com/crs](http://www.janney.com/crs) which details all material facts about the scope and terms of our relationship with you and any potential conflicts of interest.*

© JANNEY MONTGOMERY SCOTT LLC • MEMBER: NYSE, FINRA, SIPC • REF. 1822930-0225



**SoSweet**  
JEWELERS

Rosemary Camponovo, PROPRIETOR  
BROAD AXE CORNER  
46 West Skippack Pike | Broad Axe, PA 19002  
610.272.1727



Fine Jewelry  
Custom Design  
Expert Jewelry Repair  
Appraisal  
Upscale Fashion Jewelry  
Accessories  
Gifts  
Buy & Sell Precious Metals



Like Us on Facebook,  
Twitter & Pinterest



# Clarke Gallagher Barbiero Amuso & Glassman Law

*Montgomery, Bucks & Delaware Counties and Surrounding Areas*

215-633-1890 - [www.cgbaglaw.com](http://www.cgbaglaw.com)

*Municipal - School - Zoning & Land Use - Tax Assessments - Personal Injury - Estates*

## Manager's Message:



Building upon a successful 2025, we are looking forward to a busy 2026 here in Whitpain Township. Last year was a full year with the completion of several park projects including the relocation of our tennis courts from Wentz Run Park to the campus of Montgomery County Community College, the creation of pickleball courts at Wentz Run Park, the opening of an inclusive playground at Mermaid Park along with the relocation of our dog park. Work also continued at Wissahickon Park throughout the year.

This year looks to be as busy as we look forward to a spring grand opening celebration at Wissahickon Park. We also anticipate construction will begin on our new community center which is being built at the location of the former dog park at Centre Square Park. The community center will feature two multisport playing courts, an elevated walking track, a fitness center, and a large community meeting room. Although construction timelines are subject to change, the community center should open sometime in 2027.

More about these park projects, upcoming traffic improvement projects, and information about seasonal community events is contained in the pages of this newsletter. For the most up-to-date Township information, please remember to sign up for our weekly electronic newsletter the Wire at [www.whitpaintownship.org](http://www.whitpaintownship.org).

Eric Traub, *Manager*  
Whitpain Township

**BUYING or SELLING  
a HOME?**  
LET'S HAVE  
COFFEE!

A portrait of Kim Zampirri, a woman with blonde hair, smiling.

**Kim Zampirri, GRI, CRS**  
Associate Broker, Realtor®

RE/MAX  
Outstanding Agents  
Outstanding Results®

Office **215.643.3200**  
Cell **215.280.7752**  
731 Skippack Pike  
Blue Bell, PA 19422  
[Kim@KimZRealEstate.com](mailto:Kim@KimZRealEstate.com)  
[KimZRealEstate.com](http://KimZRealEstate.com)

**RE/MAX Central**

**Kim Zampirri**  
Follow KimZRealEstate  
f t in

A white van with blue and orange stripes, featuring the "WALTON" logo and "HEATING & AIR" text.

**WALTON**  
HEATING & AIR  
OIL - PROPANE  
"We'll take care of it"

Guaranteed  
24-hour  
emergency  
service for our  
customers!

★ Fuel Oil ★ A/C  
★ Service ★ Sales  
★ Propane ★ Heating

**215-391-1830**  
**WaltonInc.com**

**WALTON**  
1961 100 YEARS 2021

Visit us online  
for money-saving  
coupons!

f i x in

A QR code located in the bottom right corner of the advertisement.



## WHITPAIN TOWNSHIP CONTACT INFORMATION

960 Wentz Road • Blue Bell, Pennsylvania 19422 • Phone: 610-277-2400 • Fax: 610-277-2209

www.whitpaintownship.org • www.whitpainrec.com

Sign up for the Whitpain Wire

### BOARD OF SUPERVISORS

Scott M. Badami, *Chair*

Kimberly J. Klauder, *Vice Chair*

Joyce M. Keller, *Treasurer*

Robert A. Brunner, *Secretary*

Sara S. Selverian, *Assistant Secretary*

Local government of the Commonwealth of Pennsylvania is divided into a number of classifications i.e., cities, townships, and boroughs. There are two categories of townships in the Commonwealth – those identified as townships of the first class and those known as townships of the second class. Second class townships make up the greatest bulk of municipalities in Pennsylvania. Whitpain Township is a Township of the Second Class. It is governed by a five-member Board of Supervisors elected at large by the electorate. Most, if not all, of the executive and legislative powers allocated to Whitpain Township in the State Second Class Township Code are vested in the Board of Supervisors. The Board of Supervisors is empowered to appoint professionals to assist them in the operation of the Township and to furnish advice and counsel on technical matters. Additionally, the Board appoints all of the members of the various advisory boards and commissions as well as the Zoning Hearing Board and the Planning Commission.

The levying of Township taxes and the appropriations to the various departments and subsidiary boards and commissions are the responsibility of the Board of Supervisors. During the months of November and December, public hearings are held for the purpose of reviewing the budget for the following year. Residents are encouraged to attend these meetings and to review the proposed Township budget during that time.

#### CODE ENFORCEMENT/ZONING

- Fences
- Fire Alarms & Fire Protection Permits
- Flood Plain
- Signs
- Mechanical
- Bldg, Electrical, Plumbing, Mechanical Permits
- Plot Plans
- Property Uses
- Setbacks
- Home Use Occupations
- Variance/Special Exceptions

#### PARKS AND RECREATION

- Community Festival
- Concerts & Movies at Wentz Run Park
- Contracted Programs
- Dedication Program
- Discount Tickets
- Montco Senior Games
- Park Facility and Field Permits
- Park and Open Space Board
- Programs, Activities, & Events
- Seasonal Employment
- Shade Tree Commission
- Sponsorship Opportunities
- Summer Day Camp
- Trails and Open Space
- Volunteer/Community Service

#### POLICE

- Animal Control
- Bicycle Registration
- Block Parties
- Fingerprinting
- Gun Permits
- Parking Tickets
- Reporting Crime
- Road Closures
- Solicitation Permit
- Traffic Lights
- Non-Emergency: (610) 279-9033

#### FINANCE/SEWER

- Accounts Payable
- Audit Questions
- Human Resources
- Invoices
- SEWER
- Certifications
- Sewer Bills/Payment

#### ENGINEERING/PLANNING

- Residential Permit Inquiries (Additions, Pools, Driveways, Patios)
- Commercial/Institutional Permit Inquiries
- Site Plans/Survey Questions
- Stormwater Drainage Concerns
- MS4/TMDL Administration & Management
- GIS Mapping/Township Maps
- Grading and ICP Permits
- Township Roadway Occupancy Permits
- Site, Escrow and Permit Inspections
- Traffic Management/Traffic Signal Operations and Maintenance
- Requests for Information for Land Developments and Subdivisions
- Sanitary Sewer Design & Connection Requests
- Easement/Right-of-Way Informational Requests
- Land Development, Subdivision & Waiver Reviews
- Regulatory Agency Inquiries
- Ordinance Development and Enforcement
- Municipal Improvements Projects (Parks, Roadways, Bridges, Utility Infrastructure)

#### PUBLIC WORKS

- Christmas Tree Collection
- Fences
- Leaf Collection
- Maintenance-Building, Grounds, Park
- PA 1 Calls
- Potholes
- Streets- Paving, Snow, Road debris
- Street Signs
- Storm & Sanitary Sewer - blockage/odor
- Sweeping

#### FIRE

- Donation for Ambulance
- Prevention Education
- Safety Inspections
- Teacher Training/Fire
- Emergency Management
  - Chemical Spills
  - Fire
  - Floods
  - Power Outages
- Second Alarmers (SARS) Info Calls  
(215) 659-1885

#### MISCELLANEOUS

##### Water Companies

Ambler Water: 215-646-1000

PA American: 1-800-717-7292

North Wales Water: 215-699-4836

Montgomery County Courthouse:

610-278-3000

District Court 38-1-21: 215-646-8201

Voter Registration: 610-278-3280

Electronic & Hazardous

Waste Collection: 610-278-3618

Trash/Recycling:

Contact your trash hauler

Tax Collector: 610-492-9191

Walk-Ins Tuesday & Thursday

Call for appointment

Berkheimer: 610-279-7500

Power Outages - PECO:

1-800-841-4141

Comcast - bill/account information:

610-279-7200

Whitpain Rec Association:

playwra.com

Ambler/Whitpain Football & Cheering:

www.awtrojans.com

Wissahickon Lacrosse Club:

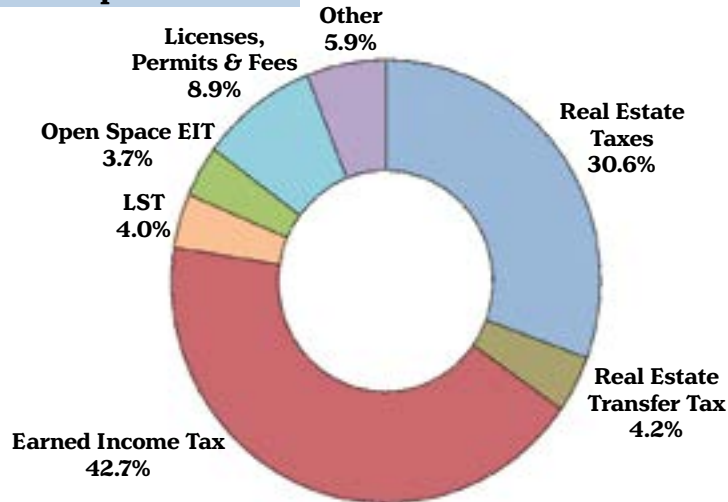
www.WissLAX.com

## Real Estate Tax Millage And Sewer Rates Unchanged

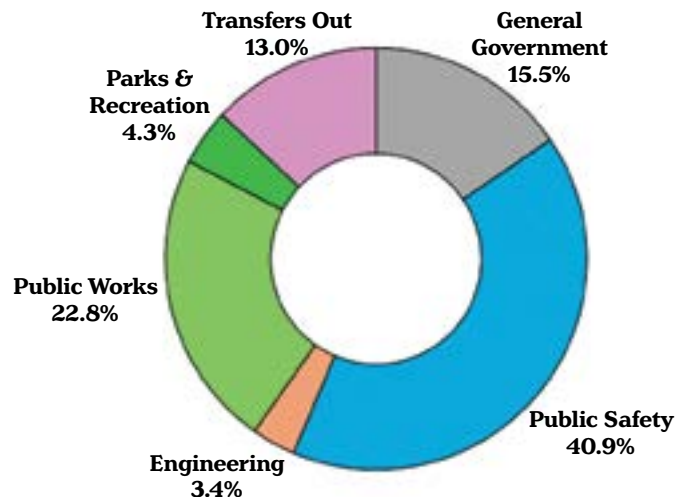
The Board of Supervisors adopted the Township's 2026 budget on December 16, 2025. The budget holds the real estate millage for 2026 steady with sewer rates also unchanged.

"The 2026 Budget is focused on providing high-quality services within the Township's fiscal constraints," said Township Manager Eric Traub. "This includes funding public safety, code enforcement, infrastructure and new parks such as the inclusive playground at Mermaid and Wissahickon Park."

### Sources of Township Revenue



### How Revenue is Spent



### Abbey Plumbing & Heating

Quality plumbing and heating service since 1976



#### 24 Hour Emergency

Phone: 215-643-6645

Fax: 215-643-2216

[www.abbeyplumbing.com](http://www.abbeyplumbing.com)



**flirt**  
women's boutique

### flirt women's boutique

994 DeKalb Pike  
Blue Bell, PA 19422

484-231-8132

[flirtwomensboutique@gmail.com](mailto:flirtwomensboutique@gmail.com)  
[flirtboutiquebluebell.com](http://flirtboutiquebluebell.com)

## Traffic Improvements Coming to School Road



This spring, crews will begin working to add traffic capacity, a traffic signal, and pedestrian improvements at the intersection of School Road and Skippack Pike. This project is largely funded by a \$1,460,000 Multimodal Transportation Fund grant which was awarded by PennDOT in late 2024.

The \$1,920,000 overall project cost includes the installation of dedicated left and right turn lanes on School Road and a dedicated left turn lane for motorists traveling from eastbound Skippack Pike onto School Road. Additionally the project features traffic signalization improvements such as new signal heads, support poles, mast arms, ADA curb ramps, pedestrian crossings, advanced video detection, radar dilemma zone detection and emergency preemption systems.

It is anticipated that the improvements will be in place and the signal will be active in late 2026.

## Make Your Home Your Favorite Place

Harth Builders can improve the beauty and comfort of every room in your home – both inside and out.

**HARTH**  
DESIGN | BUILD | REMODEL

HarthBuilders.com  
215-654-0364



812 N. Bethlehem Pike | Lower Gwynedd, PA 19002  
PA #0249 | NJHIC #13VH13529700





# Cooking Safety

Cooking brings family and friends together, provides an outlet for creativity and can be relaxing. But did you know that cooking fires are the number one cause of home fires and home injuries? By following a few safety tips you can prevent these fires.

## "COOK WITH CAUTION"

- Be on alert! If you are sleepy or have consumed alcohol don't use the stove or stovetop.
- Stay in the kitchen while you are frying, boiling, grilling, or broiling food. If you leave the kitchen for even a short period of time, turn off the stove.
- If you are simmering, baking, or roasting food, check it regularly, remain in the home while food is cooking, and use a timer to remind you that you are cooking.
- Keep anything that can catch fire — oven mitts, wooden utensils, food packaging, towels or curtains — away from your stovetop.

## If you have a small (grease) cooking fire and decide to fight the fire...

- On the stovetop, smother the flames by sliding a lid over the pan and turning off the burner. Leave the pan covered until it is completely cooled.
- For an oven fire, turn off the heat and keep the door closed.

## If you have any doubt about fighting a small fire...

- Just get out! When you leave, close the door behind you to help contain the fire.
- Call 9-1-1 or the local emergency number from outside the home.



## Cooking and Kids

Have a "kid-free zone" of at least 3 feet (1 metre) around the stove and areas where hot food or drink is prepared or carried.

## FACTS

- ❗ The leading cause of fires in the kitchen is unattended cooking.
- ❗ Most cooking fires in the home involve the kitchen stove.



**NATIONAL FIRE PROTECTION ASSOCIATION**  
The leading information and knowledge resource on fire, electrical and related hazards

[nfpa.org/education](http://nfpa.org/education) ©NFPA 2018



*Our Intention is Fire Prevention*  
**Whitpain Township Fire Marshal's Office**  
160 Mount Road  
Blue Bell, PA 19022  
610-277-3408

## Shade Tree Commission

The Shade Tree Commission is continuing to lead green initiatives throughout the Township. Last year marked the 30th consecutive year the Township was recognized with the coveted **"Tree City USA"** designation by the National Arbor Day Foundation. Additionally, Whitpain is the longest-running recipient in the entire state of the National Arbor Day Foundation's prestigious "Growth Award." Please see more of our programs and offerings below and find out more at [www.whitpain township.org](http://www.whitpain township.org).



### ***Arbor Day Native Tree Giveaway***

The Annual Township Arbor Day Beautification Program is set for Sunday, April 26 at 8 a.m. at Prophecy Creek Park. Once again, the giveaway features a wide range of native species. Along with free trees, free mulch and deer protection will be distributed to Township residents on a first-come, first-served basis.

This is a one-day event and will take place rain or shine. There is a limit of one group of three trees per address or household. No pre-registration is required but homeowners must present identification indicating Whitpain resident status.

## **STORMWATER FOR RESIDENTS**

### ***Reduce Rain Runoff - Plant a Tree***



Trees are considered green infrastructure, as they can be super useful in managing stormwater runoff. As rain falls on the canopy of a tree, the leaves intercept the rain drops, slowing down the potential erosive force as they gather. Rain then flows off the leaf surface and along the branches and trunk of the tree where it can soak into the ground and be taken up by the tree roots. Of course, trees provide many additional services from the cooling benefits of their shade, cleaner air, carbon capture, and food for wildlife, to name just a few.

### ***Did You Know?***

A single tree can prevent up to 3,000 gallons of runoff a year.







# PICNIC

## IN THE PARK

It's Picnic Season! Stock up on everything you need for the perfect outdoor feast—from cheese and fruit to prepared foods. Find it all at McCaffrey's!

### STORE LOCATIONS

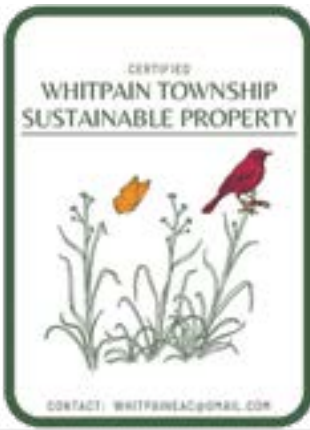
**In PA:** Yardley, Newtown, Blue Bell, New Hope, Doylestown & Gladwyne  
**In NJ:** West Windsor & Princeton



*Scan to check out everything we have to offer*







- ✓ Do you have a conservation-oriented approach to yard care?
- ✓ Want one of these yard signs?
- ✓ Are you into native plants, stormwater management, composting and/or bird-friendly activities?
- ✓ Join the movement sweeping the township and apply for a complimentary Sustainable Property yard sign\*.

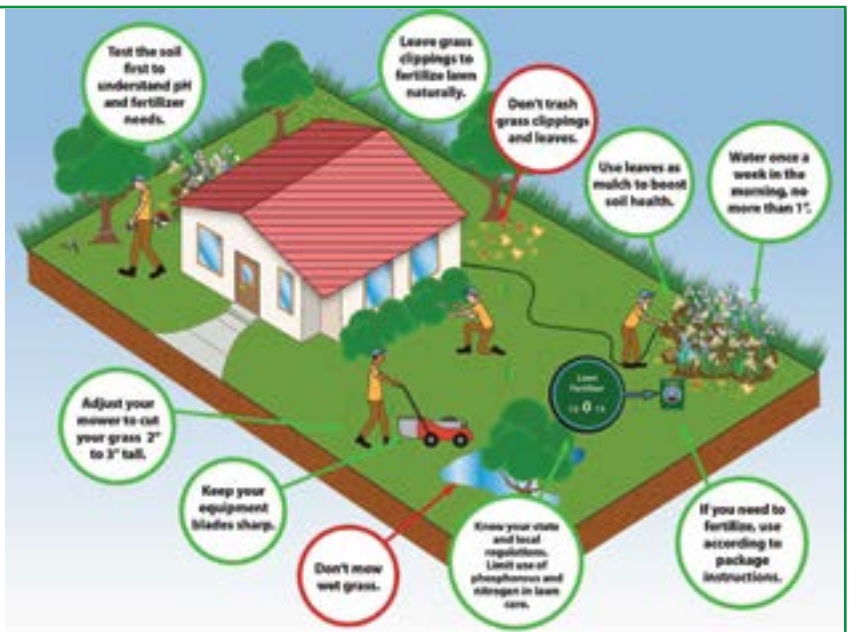
Details be found at:

<https://www.whitpaintownship.org/464/Whitpain-Sustainable-Property-Program>

*\*All Whitpain residents may apply for the program by completing an online application that will take less than 15 minutes to complete.*

## Lawn and Garden Tips to Help Curb Stormwater Pollution

source: [www.ThinkBlueMassachusetts.org](http://www.ThinkBlueMassachusetts.org)



## STEINBACH VETERINARY HOSPITAL

Jonathan F. King, V.M.D., P.C.

Hours by Appointment: 215-646-0462

120 W. Skippack Pike

Ambler, PA 19002

Fax 215-646-4388

[www.steinbachvet.com](http://www.steinbachvet.com)



**Your Business Success Shaped by Our Legal Team.**

**Kaplin Stewart**  
Attorneys at Law

Blue Bell, PA 610-260-6000  
Cherry Hill, NJ 856-675-1550  
Philadelphia, PA 215-567-3120

**Kaplaw.com**

Trust Kaplin Stewart for a hands on approach

- Land Use & Zoning
- Construction
- Real Estate Transaction
- Business, Corporate Planning & Litigation
- Estate Planning
- Environmental
- Employment

**BEST** Law Firm  
Ranked by *Fortune* Magazine  
UNITED STATES  
2026



## Blue Bell Dental Centre

Office Hours by Appointment

Mark L. Bidwell, DMD

Phone: 610-279-4277

Fax#: 610-279-3624

[www.bluebelldentalcentre.org](http://www.bluebelldentalcentre.org)

1213 Skippack Pike  
Blue Bell, PA 19422





## A Banner Year for Park Projects

New pickleball courts, a large inclusive playground, a relocated dog park, and improved tennis facilities are just some of the park improvements that were completed in 2025.

Given the popularity of pickleball, the Township undertook a pickleball feasibility study in 2024 which showed high demand for courts in Whitpain. Looking to leverage community partnerships, the Township was able to join with Montgomery County Community College to renovate their existing tennis facilities and open them for community use. With tennis relocated to the college's campus, work began to convert the old tennis courts at Wentz Run Park into new pickleball courts. Work was completed in September and a grand opening ceremony to celebrate the addition of 12 new pickleball courts was celebrated on September 16.

Meanwhile Township crews were busy in Mermaid Park where the dog park was relocated from its previous location at Centre Square Park. This move was necessary



Wissahickon Park



Mermaid Park Inclusive Playground



Wissahickon Park



Pickleball Courts at Wentz Run Park



Tennis Courts at Montgomery County Community College

to make room for the new community center which will be built at the location of the previous dog park. Crews also built a new inclusive playground at Mermaid Park. The playground is comprised of three nature-based “pods,” each offering a variety of sensory, physical and educational experiences for users. The opening of the dog park and the inclusive playground was celebrated with a ribbon cutting ceremony on November 16.

Much progress has also been made on Wissahickon Park in West Ambler. Construction began this spring, and when completed, the new park will feature playing courts, a grass volleyball court, a tot-lot playground for children ages 2-5, a separate playground for older children ages 5-12, and a 0.5-mile paved walking trail around the perimeter of the park. There will also be sidewalk installations to make the

park accessible to the community and additional parking. It is anticipated that a grand opening ceremony to officially open the park will happen in the early spring of 2026.

# PARKS & RECREATION DEPARTMENT



## Programs & Events

Director – Michael Richino, CPRP . . . Ext. 375  
 Assistant Director – Malcolm Smith II, CPRP . . . Ext. 381  
 Program Administrator – Lexi McKinney . . . Ext. 374  
[park&rec@whitpaintownship.org](mailto:park&rec@whitpaintownship.org)



Whitpain Township



@WhitpainTwp



@WhitpainParksandRec

**MISSION STATEMENT:** The Parks & Recreation Department strives to provide a variety of programs and services to enhance the quality of life and create a sense of community. As we progress through the years, we will make every attempt to introduce programs that meet the educational, social, and recreational needs of our residents and guests.

### ACCESSIBILITY AND ACCOMMODATIONS:

Whitpain township parks and recreation is committed to actively working to make township events, trails, parks, playgrounds, sports fields, and open space easily accessible to those with disabilities. The parks and recreation department encourages and supports the participation of all guests, including guests with disabilities. We assist all guests as needed. Please contact us at 610-277-2400 to request accommodation.

### *At a Glance - Program Start Dates - view page number for more information*

#### March

16 – Monday Yoga with Matthew Mitlas.....	28
21 – Young Rembrandts .....	23
25 – Wednesday Yoga with Karen Strawhacker .....	28
28 – Washington DC Day Trip .....	14
30 – Mad Science Spring Break Camp.....	23
30 – USSI Spring Break Multi Sport Camp .....	24

#### April

4 – Pickleball: Youth & Teen Learn to Play .....	27
4 – Pickleball: Adult Beginner Clinic.....	27
4 – Pickleball: Adult Intermediate Clinic .....	27
6 – Cardio Pickleball .....	27
7 – Zumba .....	28
8 – Whitpain Walkers .....	28
16 – Pickleball Leagues .....	27
18 – USSI Parent & Me Soccer .....	24
18 – USSI Squirt Multi Sport.....	24
20 – PSCTA Youth Tennis Lessons.....	26
22 – Tennis Haven: Individual Instruction .....	26
25 – Young Rembrandts.....	23
28 – Tennis Haven Jr Group Lessons .....	26
28 – Tennis Haven: Tennis for Fitness .....	26
30 – Tennis Haven: Drill & Match .....	26

#### May

4 – Montgomery County Senior Games .....	28
4 – Cardio Pickleball .....	27
9 – Pickleball: Youth & Teen Learn to Play .....	27
9 – Pickleball: Adult Beginner Clinic .....	27
9 – Pickleball: Adult Intermediate Clinic .....	27
11 – Jump Start Sports: T-Ball .....	25
14 – Jump Start Sports: Hummingbird Soccer .....	25
19 – GeoVentures Schools Out Program .....	25
20 – Wednesday Yoga with Karen Strawhacker .....	28

#### June

1 – PSCTA Youth Tennis Lessons .....	26
1 – Monday Yoga with Matthew Mitlas.....	28
2 – Medicare Seminar .....	16
2 – Zumba .....	28
4 – Pickleball Leagues.....	27
8 – Cardio Pickleball .....	27

#### June (continued)

11 – Mindfulness in Nature .....	16
13 – Community Yard Sale.....	13
15 – Junior Pickleball Camp .....	19
15 – Jump Start Sports Basketball Camp .....	19
16 – Movie in the Park .....	15
18 – Outdoor Summer Solstice Celebration.....	16
22 – Whitpain Golf Classic.....	14
22 – Stony Creek Day Camp and Tracers .....	18
25 – Concert in the Park .....	15
29 – Jump Start Sports: T-Ball.....	25

#### July – Parks and Recreation Month!

6 – Young Rembrandts Camp .....	20
9 – Jump Start Sports: Hummingbird Soccer .....	25
13 – Theatre Horizon Camp Week 1 .....	20
13 – Dr. Stuart Malcolm Soccer Camp .....	22
13 – PSCTA Youth Tennis Lessons .....	26
13 – Cardio Pickleball.....	27
16 – Concert in the Park.....	15
20 – Dr. Stuart Malcolm Soccer Camp.....	22
20 – Theatre Horizon Camp Week 2 .....	20
20 – Phillies Baseball Academy Camp.....	21
20 – Monday Yoga with Matthew Mitlas .....	28
22 – Yin Yoga Series with Karen Strawhacker .....	28
27 – Theatre Horizon Camp Week 3 .....	20
28 – Zumba .....	28
30 – Concert in the Park .....	15

#### August

3 – Princess Camp.....	21
3 – Young Rembrandts Camp .....	20
10 – Bricks 4 Kidz Camp .....	21
10 – USSI Summer Camps .....	22
11 – Movie in the Park .....	15
17 – Junior Pickleball Camp .....	19
17 – Jump Start Sports Basketball Camp .....	19
20 – Concert in the Park .....	15

#### September

25 – Big Rig Round-Up – Save the date!
26 – Whitpain Community Festival – Save the date!





## REGISTRATION PROCEDURES

- Register for programs online at [www.whitpainrec.com](http://www.whitpainrec.com) or in person at the Whitpain Township Building, 960 Wentz Road, in Blue Bell, between 9 am and 4 pm.
- Registrations cannot be made over the phone.
- Registrations are processed in the order in which they are received.
- All fees are payable upon enrollment.
- No refunds or adjustments for: missed classes; discontinuing an activity; cancellation; and/or falsification of information.
- Fees will only be refunded if a program is canceled due to insufficient enrollment.
- Some programs/classes are held within a Wissahickon School District building. If the school is closed due to inclement weather or to observe a holiday, no classes will be held. School closing numbers are: #314 (Wissahickon School District) & #320 (MCCC).
- Programs rely on minimum enrollment to run. Please register at least two weeks before the start date.
- Programs may be canceled if the required minimum enrollment is not met one week before the start of a program.

*Program and event dates, locations, and prices may change after the printing of this newsletter. While we do our best to ensure the program details in this newsletter are accurate, please refer to [www.whitpainrec.com](http://www.whitpainrec.com) for the most up-to-date information.*

## PARTNERSHIP OPPORTUNITIES

Engage with the community by becoming a sponsor today! We are looking for sponsors to help offset our expenses. You will actively be helping put on great local events of your choosing. Once you become a partner, Whitpain Township will promote your business as much as possible. **Please contact us at [park&rec@whitpaintownship.org](mailto:park&rec@whitpaintownship.org) if you are interested in partnering with us. We can customize a package to meet your needs!**

## Discount Tickets

**DISCOUNT TICKETS** may be purchased at the Township Building Monday-Friday, between 9 am and 4 pm. Cash preferred, credit accepted (Visa, MasterCard, Discover). \$20 minimum for all credit transactions.

Please visit [www.whitpainrec.com](http://www.whitpainrec.com) for updated discount ticket information and online purchases for select tickets.

**NO refunds or exchanges ~ ALL ticket sales are final.**



### MOVIE TICKETS

AMC Theatres .....	\$10
Movie Tavern .....	\$9.50
Regal/United Artist .....	\$10

## Special Events



## COMMUNITY YARD SALE

Join us for another year of our Community Yard Sale in partnership with Plymouth Township Park & Recreation.

**FREE!** One person's trash is another one's treasure. Come find treasure at our Community Yard Sale. Good bargains can be found for everyone!



**SATURDAY, JUNE 13, 2026**

**Open to the public: 8AM – 1PM**

**Vendor fee: \$20, 3 parking spots approx. 18' wide.**

**Location: Montgomery County Community College ~ Morris Road Lot**





## Special Events continued



**\$225**  
per person

### WHITPAIN GOLF CLASSIC

Proceeds benefit the Whitpain Police Association and the Stony Creek Day Camp Scholarship Fund. Price includes a round of golf with cart, lunch, beverages on the course, open bar reception, full buffet banquet, prizes, giveaways, and much more!



**MONDAY, JUNE 22, 2026 at Blue Bell Country Club**

Visit [www.whitpainrec.com](http://www.whitpainrec.com) for more information and to register.

\*Space is limited!

### WASHINGTON DC DAY TRIP

**SATURDAY, MARCH 28, 2026**

**\$73 R / \$78 NR**

We have teamed up with Upper Dublin (UD) Parks and Recreation for a day trip to Washington DC! Enjoy the Smithsonian Museums, National Monuments, and the famous Cherry Blossom Festival! This is a day on your own trip, please plan your day ahead of time.



#### Departing from UD Library:

**6:15 am: .....Check-in**

**6:30 am: .....Bus leaves**

#### Departing from DC

**5:15 pm: .....Check in at Union Station**

**5:30 pm: .....Bus leaves DC**

**9:00 pm: .....Return to UD Library**

*Location: Bus leaves and returns to Upper Dublin Library: 520 Virginia Drive, Fort Washington, PA 19034*



**Sue Cook**

Account Manager

325 Sentry Parkway, Bldg 5 West Suite 200  
Blue Bell, PA 19422  
Bus: 610-584-6595  
[sue.cook.y302@statefarm.com](mailto:sue.cook.y302@statefarm.com)

**Eva Finlan, Agent**

**MONTCO  
CULTURAL CENTER**  
2025-2026 SEASON

[mc3.edu/CultureEvents](http://mc3.edu/CultureEvents)

**Tickets on sale now!**



Ambler, PA

Family Owned & Operated

**MCGARRY**  
CLEANING SERVICES  
COMMERCIAL • RESIDENTIAL • JUNK REMOVAL

**215-738-1543**  
[www.mcgarrycleaning.com](http://www.mcgarrycleaning.com)

**JUNK  
REMOVAL**

- Residential Cleaning
- Office Cleaning
- Junk Removal

- Post Construction Cleanup
- Apartment Turnovers
- and much more

Insured & Bonded



**Mike Doolin**  
REALTOR®

**kw**

**KELLERWILLIAMS**  
REAL ESTATE

Cell: (215) 407-9611  
Office: (215) 646-2900  
Email: [mikedoolin@kw.com](mailto:mikedoolin@kw.com)  
Website: [www.mikedoolin.com](http://www.mikedoolin.com)

910 Harvest Drive, Suite 100, Blue Bell, PA 19422

EACH OFFICE IS INDEPENDENTLY OWNED AND OPERATED



*I'm Here To Help!*





## SUMMER concerts & movies

**FREE** fun for the whole family! Unless otherwise noted, concerts & movies are held at Wentz Run Park.

### CONCERTS: Thursdays

*Starts at 7 pm*

June 25 .....Amish Outlaws at Mermaid Park  
 July 16.....The Class of '84  
 July 30 .....The SuperNaturals  
 August 20 ..Erich Cawalla & The Uptown Band

*Join us for Pre-Concert activities 5-7PM for  
 concerts held at Wentz Run Park!*

Sponsored by



### MOVIES: Tuesdays

*Starts at Dusk*

June 16

Live Action: How to Train Your Dragon

August 11

Zootopia 2



## Bob McGrath's Tree Service, LLC

*Your tree will fall for us  
 (you will too, when you see our prices)  
 Fully Insured • Free Estimates*

215-784-9124 • 610-292-9806  
 721 Cathcart Road • Blue Bell, PA 19422



CARDIOLOGY CONSULTANTS  
OF PHILADELPHIA

*WELCOMING NEW PATIENTS  
AND  
THANKING OUR ESTABLISHED PATIENTS*

Outstanding cardiac care in  
the heart of Montgomery County

### LOCATIONS

CCP Blue Bell  
Phone (610) 279-7696

CCP Collegeville  
Phone (610) 831-0300

CCP East Norriton  
Phone (610) 279-1370

CCP Norristown  
Phone (610) 272-3253

[www.ccpdocs.com](http://www.ccpdocs.com)



**JMTawnings**

215-659-5239  
[www.jmtawnings.com](http://www.jmtawnings.com)

*The Quality, Reliability  
& Experience You Expect*

## Workshops

### Know Your Medicare Options

Have your questions answered so you can make the right choice when planning for Medicare or Medicare Advantage decisions. During this free educational seminar, you will learn:

- How Medicare works and what it covers
- How Part D prescription cards work and how to pick the right one for you.
- The difference between Medicare supplements and Medicare Advantage plans.

This seminar is suitable for whether you have decisions to make during the upcoming open enrollment period or just want to learn more in preparation for that time.



**Ages:**  
**18+**

**TUESDAY, JUNE 2, 2026**

**TUESDAY, OCTOBER 6, 2026**

**6:30 PM – 8:00 PM**

**FREE (pre-registration preferred)**

**Location: WRA Clubhouse Pavilion  
at Centre Square Park**

**Presenter: Steve Pearlman, MMEAU Medicare  
Specialists (A DelVal Seniors Agency)**

*Min. 5 / Max. 25*

### MINDFULNESS IN NATURE: A Guided Outdoor Experience

**Led by Matthew Mitlas**

Slow down and reconnect with the natural world. These guided walks will combine silent walking, sensory awareness practices, and gentle breath meditation. Participants will learn how to attune to the beauty of nature in any environment. This practice is appropriate for brand new beginners and experienced meditators.

Meet at the Gazebo in Wentz Run Park at 12pm. Please wear appropriate walking shoes. Bring your lunch for an optional picnic afterwards!

**THURSDAY, JUNE 11, 2026**

**12:00 – 1:30PM**

**Ages: 16+**

**\$25 R / \$30 NR**

**Wentz Run Park – Gazebo Lawn**

**Instructor: Matthew Mitlas**

*Min. 10 / Max. 18*

### OUTDOOR SUMMER SOLSTICE CELEBRATION

As the sun reaches its peak energy and gives the earth the longest day, please join instructor Karen Strawhacker for an outdoor celebration of yoga, meditation and sound healing.

This is a powerful time of harnessing sun energy in order to prepare for the upcoming fall equinox, where you harvest your intentions set at the summer solstice.



**THURSDAY, JUNE 18, 2026 from 7:00 - 8:15PM**

**Ages: 16+**

**\$20 R / \$25 NR**

**Wentz Run Park – Gazebo Lawn**

**Instructor: Karen Strawhacker**

*Min. 6 / Max. 18*





American Heart Association  
Healthy for Good™

# DRESS FOR WORKOUT SUCCESS

Sometimes the right gear can make or break your sweat sesh. With a few simple tweaks, you can get your wardrobe workout-ready in no time.



## Stay Well-Heeled

- Get fitted by a professional in at athletic store.
- Give your feet room to swell with a slightly larger size than you'd typically wear.
- Choose a shoe based on comfort, not on construction.
- Replace your shoes when they no longer feel comfortable.



## Support Yourself

- Invest in a sports bra that is supportive but not too tight.
- Men need support too! Sprint for some breathable athletic underwear.



## Be Seen

- Wear lighter colors to be seen at dusk and dawn.
- Use reflective clothing, tape and vests.
- Attach LED lights or reflectors to your shoes.



## Weather Up

- Choose moisture-wicking fabrics instead of cotton.
- When it's cold, dress in layers.
- Invest in a lightweight rain jacket with air vents.
- Wear hats, scarves, and gloves to keep warmth in.



## Protect your Skin

- Avoid blisters with double-layered athletic socks.
- Wear thin layers with flat seams to reduce chafing.
- Look for UV-blocking clothing, hats and sunglasses.

**EAT SMART** **MOVE MORE** **BE WELL**

Learn more at: [heart.org/healthyforgood](https://heart.org/healthyforgood)

© Copyright 2024 American Heart Association, Inc.





# STONY CREEK DAY CAMP & TRACERS TEEN CAMP

Registration opens for **RESIDENTS** on **THURSDAY, FEBRUARY 26 AT 10AM!**  
Registration opens for **NON-RESIDENTS** on **THURSDAY, MARCH 19 AT 10AM!**

**JUNE 22 through AUGUST 7**

**NO CAMP  
FRIDAY,  
JULY 3**

## IMPORTANT CHANGES TO STONY CREEK DAY CAMP/TRACERS

The Whitpain Township Parks and Recreation Department prides itself on offering a high-quality, well-staffed, and engaging camp program. With rising costs and increased difficulty in staffing, we have made some changes to the program to help ensure that a quality camp experience is not sacrificed. These changes will help us manage group sizes, balance staffing, and ensure a smooth and enjoyable experience for every camper. The most notable changes are:

**Limited Enrollment/Grade Caps** – limiting enrollment allows us to better plan for trips and special events and give us a set number of campers so we can hire an appropriate number of staff to keep optimum camper to counselor ratios.

**Registration** – with camp space now limited we are opening registration to Whitpain Township residents first. Non-residents will be able to register approximately one month later if there is space available.

Also new for 2026 the weekly Kona Ice truck visit will be included with your camp registration.

The core of the camp program isn't changing, and campers will still experience weekly trips, in house special events, theme days and more.

**WITH DEDICATED STAFF, STRUCTURED GRADE GROUPS, AND A SUMMER PACKED WITH ACTIVITIES, WE'RE READY TO DELIVER UNFORGETTABLE MEMORIES FOR 2026.**



## DAY CAMP

For campers entering Grades 1-5  
in the 2026-2027 school year  
**FULL 7 WEEKS: \$1025 R / \$1200 NR**

- Register by April 29 and save \$25!
- Weekly: \$180 R / \$210 NR

**We can't wait to  
welcome your camper for  
another incredible summer!**

## TRACERS CAMP (Teen Camp)

For campers entering Grades 6-9  
in the 2026-2027 school year

**FULL 7 WEEKS: \$1650 R / \$1800 NR**

- Register by April 29 and save \$25!
- Weekly: \$285 R / \$325 NR

Tracers will enjoy an elevated experience with special off-site adventures and additional, optional trips, giving campers more choice, independence, and excitement throughout the summer.







## ONE WEEK SPECIALTY CAMPS

### Junior Pickleball Camp

Universal Rackets is excited to bring Whitpain Township Junior Summer Pickleball Camps! During the program, campers will learn the strokes and rules of pickleball in a fun, upbeat environment. Students will drill, play fun and instructional games, and have the opportunity for some friendly competition. Campers should bring their own paddle, a filled water bottle and wear comfortable athletic clothes and sneakers.



**WEEK 1: JUNE 15 – 18**

(Monday – Thursday, Rain date is Friday, June 19)

**WEEK 2: AUGUST 17 – 20**

(Monday – Thursday, Rain date is Friday, August 21)

**9AM – 12PM**

**AGES: 6 - 12**

**\$295 R / \$300 NR**

Location: Wentz Run Park – Pickleball Courts

Instructor: Universal Rackets

Min. 6 / Max. 40



### Jump Start Sports Basketball Camp

Players have a blast learning fundamentals like dribbling, passing, shooting, positioning, defense, and rebounding through creative drills and games. The week ends with a fun 3-on-3 tournament!



**WEEK 1: JUNE 15 – 19**

**WEEK 2: AUGUST 17 – 21**

**9AM – 12PM**

**Ages: 6 - 12**

**\$160 R / \$175 NR**

Location: Wentz Run Park – Basketball Courts

Instructor: Jump Start Sports

Min. 12 / Max. 40



#### Factory Certified Collision Repair Specialists

811 DeKalb Pike  
Blue Bell, PA 19422

T: (610) 277-2929 • F: (610) 277-0030

534 N. Trooper Road  
Norristown, PA 19403

T: (484) 684-7220 • F: (484) 684-7372



**www.centersquaremotors.com**  
**info@centersquaremotors.com**

*Chuck Dietch, Owner*

Center Square Motors is a state-of-the-art collision repair facility, serving the region since our beginning as D&C Auto Body in 1956. We provide:

- On-site car rental
- 24-hour towing service
- OEM Certified Collision Repair for Acura/Honda, Infiniti/Nissan, FCA, Alfa Romeo, Hyundai and others



## YOUNG REMBRANDTS SUMMER CAMPS

### COCONUTS AND CROWNS: A POLYNESIAN ADVENTURE

Discover the beauty of Polynesia through drawing! In this 5-day workshop, children will create original characters like a spirited island girl and cheeky coconut creatures, as well as traditional Polynesian flower crowns. Artists will also illustrate breathtaking ocean scenes with Wa'a Kaulua boats and the serene landscapes of island huts and native plants. This workshop blends realism with cartoons, using vibrant no-mess materials like colored pencils and markers. Let the islands inspire your young artist!



**AGES:**  
6 – 12



**JULY 6 – 10 from 10:00AM – 12:00PM**  
**\$190 R / \$ 195 NR**

**Location:** WRA Clubhouse at Centre Square Park  
**Instructor:** Young Rembrandts  
(Min. 5 / Max. 20)



### BABY ANIMALS

Embark on an enchanting 5-day journey through the diverse world of baby animals. Begin with the heartwarming realism of nature's young, from the gentle gaze of a fawn to playful otters. Transition into the whimsical Kawaii style, capturing those irresistibly cute, wide-eyed creatures. Add a twist as we imagine baby animals donning fashionable attire, blending humor with creativity. Dive into legends with mythical baby creatures, merging mystery with artistry. The week culminates in a grand composition, a testament to the skills and passion ignited throughout the workshop. Perfect for young artists eager to explore varied artistic styles while celebrating the charm of baby animals. Enroll today for a blend of creativity and cuteness!

**AGES:**  
6 – 12



**AUGUST 3 – 7 from 1:00PM – 3:00PM**  
**\$190 R / \$195 NR**

**Location:** WRA Clubhouse at Centre Square Park  
**Instructor:** Young Rembrandts  
(Min. 5 / Max. 20)



## THEATRE HORIZON DRAMA CAMP



In Theatre Horizon's Summer Drama Camp, young actors spend a week working as an ensemble to create an original play – full of drama, comedy, suspense, and one-of-a-kind

**AGES:**  
7 – 11

characters. Professional teaching artists guide campers through playwriting basics and fun improvisation games. On the last day of camp, they perform their world premiere play for an audience of friends and family using props and costumes they made themselves! Drama Camp is a place to make new friends, build ensemble skills, take on leadership roles, and explore creativity. Curtain up!

**WEEK 1: JULY 13 – 17 | WEEK 2: JULY 20 – 24 | WEEK 3: JULY 27 – 31**  
**9:00AM – 3:00PM**  
**\$200 R / \$225 NR**

**Location:** WRA Clubhouse at Centre Square Park  
**Instructor:** Theatre Horizon  
(Min. 10 / Max. 22)







## PHILLIES BASEBALL ACADEMY SUMMER CAMP

For campers ages 6-14, the HomeRun Experience is designed to provide overall skill instruction and training in every position. Each camper receives age-appropriate coaching, promoting progression in baseball fundamentals at various locations throughout Pennsylvania, New Jersey, and Delaware. The week includes daily games to reinforce skills learned, meet a Phillies player, an instructional clinic from a Phillies Coach, and an exclusive behind-the-scenes Citizens Bank Park tour.

### HIGHLIGHTS:

- Meet a Phillies player.
- Instructional clinic from a Phillies Coach.
- Daily games and contests to reinforce skills learned.
- Exclusive behind-the-scenes Citizens Bank Park tour  
(bus transportation provided with Phillies Baseball Academy staff).

**AGES:**  
**6 – 14**

**JULY 20 - 24 from 9:00AM – 3:00PM**

**\$650** (Early Bird Discount available through January 22: \$595)

Location: Wentz Run Park

Register at [www.philliesacademy.com](http://www.philliesacademy.com)

## STARDUST ENTERTAINMENT - PRINCESS CAMP



Campers are royally invited to attend Princess camp for a grand adventure. Our activities will include interactive games, princess story time, royal princess training, wand making, tiara crafting, princess science, and princess crafts. On the last day we will celebrate with a royal tea party, and children are invited to dress up as their favorite princess.

**AUGUST 3 – 7 from 9:00AM – 12:00PM**

**AGES: 4 – 8**

**\$155 R / \$160 NR**

Location: WRA Clubhouse at Centre Square Park

(Min. 10 / Max. 24)

## BRICKS 4 KIDZ: GAME ON! Mario & Friends Edition

We know you love Mario, Sonic, MineCraft and more, and so do we! But now it's time to unplug the console and pull out the LEGO Bricks! Get your game on as brick our way through levels of building, power up with some motor-powered LEGO models, and try to earn a few "extra lives" building mini-figures and 3D Sculptures. Each day is a new adventure as the virtual and LEGO® worlds collide the Bricks 4 Kidz way.

**AUGUST 10 - 14 from 9:00 AM – 12:00 PM**

**AGES 5 – 11**

**\$185 R / \$190 NR**

Location: WRA Clubhouse at Centre Square Park

Instructor: Bricks 4 Kidz

(Min. 10 / Max. 20)





## USSI SUMMER CAMPS



**AUGUST 10 – 14**

**MULTI SPORT CAMP: 9AM – 12PM**

**SOCCER CAMP: 12:30-3:30PM**

**FULL DAY SOCCER &  
MULTI SPORT CAMP:  
9AM – 3:30PM**

**AGES 5 – 12**

**HALF-DAY CAMP:  
\$237 R / \$262 NR**

**FULL-DAY CAMP:  
\$390 R / \$415 NR**

**Location: Wentz Run Park ~  
Multipurpose Fields**

**Instructor:  
US Sports Institute (USSI)  
Min. 16 / Max. 24**

- Groups are separated by age and ability to ensure all players flourish in an optimum positive environment.
- All sports equipment required for this camp will be provided by USA Sport Group.
- All participants will receive a FREE Dri-Fit Shirt.

**Multi Sports:** Our flagship Multi-Sports Camp gives players the opportunity to experience over 10 different sports across a fun-filled week of camp. Every camp is coached by our professional and energetic coaches who are trained to encourage maximum participation, good sportsmanship, and above all ~ FUN!

Our Multi-Sports Camp is a must for children who are either new to playing sports and want to experience many different forms, or for the sports enthusiast who just can't get enough!

**Soccer Camp:** Our Soccer camp gives players the opportunity to receive soccer instruction at a level that will both challenge them and ensure they have a fantastic experience at camp. Every camp is coached by our professional staff that is trained to encourage maximum participation, good sportsmanship, and above all ~ FUN!

Recreational level players will learn the fundamentals needed to become efficient soccer players, concentrating on their technical development including passing, first touch, and shooting.

Travel and academy players will learn more advanced technical skills while also working on the tactical side of the game. Players will develop both their decision making and strategic play in competitive match play situations.

***Don't want to pick just one? Register for both!***

## DR. STUART MALCOLM SOCCER CAMP

For more info or to register, visit:  
[StuartMalcolmSoccerCamp.com](http://StuartMalcolmSoccerCamp.com)



Center Square Park, Whitpain Twp

**2026 SOCCER CAMPS**

**For Boys & Girls  
Ages 5-15**

**REGISTER NOW  
SPACE IS LIMITED!**



**Full-Day Camp:**

July 13th - July 17th

July 20th - July 24th

Mon-Thurs: 8:30am-2pm

Fri: 8:30am-11:30am

**Half-Day Camp:**

July 13th - July 17th

July 20th - July 24th

8:30am-11:30am





## YOUTH PROGRAMS

### YOUNG REMBRANDTS

A Different Kind of Learning. A Powerful Kind of Fun... Welcome to Young Rembrandts! We teach drawing with a see - touch - do method that all kids can succeed with, learn from and love! We look forward to an exciting year of classes at Whitpain Township.

The secret to our success is that children ALREADY love to draw - we just take their love a little further, by giving them a solid foundation that will take their drawings from doodles to confidence-boosting achievements. During our once-a-week classes, we use an innovative step-by-step approach on drawing topics your kids can relate to and learn from. Watch your child reach a new level of potential with this engaging, award-winning program. Young Rembrandts is a different kind of learning and a powerful kind of fun.



#### SPRING SESSION 1:

**Saturdays**

**March 21 – April 18**

(No class April 4)

#### SPRING SESSION 2:

**Saturdays**

**April 25 – May 16**



#### EARLY ELEMENTARY SCHOOL DRAWING CLASSES

**9:00 AM – 9:45 AM**

**Ages 4 – 6**

#### DRAWING CLASSES

**10:00 AM – 11:00 AM**

**Ages 7 – 14**

#### CARTOON DRAWING CLASSES

**11:15 AM – 12:15 PM**

**Ages 8 – 14**

**Location: Whitpain Township Building, Pronczak Room "B"**

**Instructor: Young Rembrandts**

**\$83 R / \$88 NR**

**(Min. 5 / Max. 20)**

## MAD SCIENCE SPRING BREAK CAMP

**AGES:  
6 - 12**

**Eureka: Flight to the Future** – Use your imagination and creativity to escape the dangers of an island and make it back into space! Explore technological advances: submarines, boats, stomp rockets, & spacecraft. Discover science fiction through the works of Jules Verne and Isaac Asimov. All campers will build and take home their own sci-fi inspired light sabers!

**Chemical Curiosities** – Become a creative chemist through the investigation of the periodic table and the atoms that make up everything around us! Learn about chemical reactions as you grow crystals. We will experiment oxidizing metals with different chemicals to see how rusty they get, design chromatography bandanas to take home, and even make our very own ice cream!



**MONDAY, MARCH 30 – FRIDAY, APRIL 3**

**9:00AM – 3:30PM**

**\$365 R / \$370 NR**

**Location: WRA Clubhouse at Centre Square Park**

**Mad Science Instructors - Min. 12 / Max. 17**





Instructor: The US Sports Institute (USSI)

### USSI SPRING BREAK CAMP (Min. 16 / Max. 24)

Our **SPRING BREAK Multi Sports camp** gives players the opportunity to experience 3+ sports during a fun-filled camp. Every camp is coached by our professional staff, trained to encourage maximum participation, good sportsmanship, and above all - FUN! USA Sport Group Multi Sports School's Out camp is a must for children who are either new to playing sports or for sports enthusiasts. Our Multi Sports camp allows participants the opportunity to play and learn different sports in a fun and safe setting.

- **Beginner-level players** will learn the fundamentals of each of the sports through fun games and activities, helping to develop their knowledge of the basic rules and techniques needed to become an effective player.
- **Intermediate/advanced level players** will learn more advanced skills needed to master each sport, while also being exposed to competitive scrimmages.

**MONDAY, MARCH 30 – FRIDAY, APRIL 3**

**9:00AM – 12:00PM • AGES: 5-11**

**\$237 R / \$262 NR**

Location: Wentz Run Park – Gazebo Lawn

**SATURDAYS, APRIL 18 – JUNE 13 (No class May 23)**

All equipment needed for this class will be provided by The US Sports Institute.

All children will be split into groups based on age and experience level.

### USSI Parent & Me Soccer (Min. 7 / Max. 12)

Embark on a soccer adventure in a nurturing, non-competitive setting. Guided by their parents, young participants will acquire essential movement skills through dynamic games and activities designed to enhance kicking and dribbling abilities. All of this is facilitated with the support and guidance of a parent by their side. With a parent actively participating beside them, your child will enjoy quality bonding time while learning fundamental skills. Our curriculum is carefully tailored to promote both physical and personal growth, offering excitement and fun in every session, including songs, yoga, soccer games, and an epic obstacle course designed specifically for toddlers. In our "Parent & Me" program, parents play a vital role as active participants. Parents are required to provide 1-to-1 support to their child. If you have two children, one person aged 13 or older can participate to fulfill the additional supervision role. Your enthusiastic engagement is crucial for the program's success. You will be fully involved, offering one-on-one support and guidance to your child. This partnership not only enhances their sports skills but also nurtures valuable life skills such as teamwork and self-confidence.

**SESSION 1: 8:30 – 9:10AM | AGES: 1.5 - 2.5**

**SESSION 2: 9:15 – 9:55AM | AGES: 2 - 3**

**SESSION 3: 10 – 10:40AM | AGES: 2 - 3**

**\$211 R / \$236 NR**

Location: Wentz Run Park: Gazebo

### Squirt Multi Sport (Min. 7 / Max. 10)

Squirts allows children to experience a variety of sports throughout the program. Our professional coaches ensure that children are engaged in fun, inclusive activities, in a positive learning environment. Players will have the opportunity to try Lacrosse, Soccer, T-Ball, & Track & Field. In addition to emphasizing the fundamentals of each sport, each activity is designed to improve hand-eye coordination, balance, agility, and movement. Classes will include a series of fun challenges, structured activities, and scrimmages adapted to ensure everyone achieves success.

**SESSION 1:**

**8:30 – 9:15AM | AGES: 3 – 4.5**

**SESSION 2:**

**9:20 – 10:05AM | AGES: 4 - 5.5**

**SESSION 3:**

**10:10 – 10:55AM | AGES: 4 – 5.5**

**\$211 R / \$236 NR**

Location: Wentz Run Park: Gazebo

**Multi-Sports Class Highlights:** Development of fine motor skills • Play a variety of different sports

Fun sports-themed activities • Concept of being part of a team • Free Dri-Fit Shirt & completion certificate





### ***Jump Start Sports*** **T-BALL**

A fun and highly instructional introduction to baseball for 3–5-year-old boys and girls. Players learn the basics of throwing, catching, fielding, batting, and base running, then apply what they've learned in fun, non-competitive games. All players receive a team shirt and baseball cap! Parents are encouraged to help coach, but the program is led by trained Jump Start Sports staff.



**MONDAYS;**  
**SPRING SESSION:**  
**MAY 11 – JUNE 15**  
**SUMMER SESSION:**  
**JUNE 29 – AUGUST 3**

**5:30 – 6:30PM**

**AGES: 3 - 5**

**\$125 R / \$130 NR**

**Location: Wentz Run Park –**  
**Multipurpose Field**  
**Min. 12 / Max. 40**



### ***Jump Start Sports*** **HUMMINGBIRD SOCCER**

Children ages 3–6 have fun while learning soccer fundamentals in an age-appropriate program! Each session includes skill instruction, fun drills, and low-key, non-competitive games. Children should bring water and wear shin guards; all other equipment is provided. Campers receive a t-shirt and award.

**THURSDAYS;**  
**SPRING SESSION:**  
**MAY 14 – JUNE 18**  
**SUMMER SESSION:**  
**JULY 9 – AUGUST 13**  
**5:30 – 6:30PM (AGES: 3 - 4)**  
**6:30 – 7:30PM (AGES: 5 - 6)**  
**AGES: 3 - 6**  
**\$125 R / \$130 NR**  
**Location: Stony Creek**  
**Sports Park**  
**Min. 12 / Max. 40**



## **GEOVENTURES SCHOOLS OUT PROGRAM**

### **Wild About Art**

This camp brings together an exploration of nature with a chance to be a creator. We'll learn about art using natural materials to make paintings, sculptures, pressed art and more!

**TUESDAY, MAY 19**  
**9 AM – 3 PM**  
**INSTRUCTOR: GEOVENTURES**  
**AGES: 6 - 10**  
**\$80 R / \$85 NR**  
**Location: Concession Pavilion at Wentz Run Park**  
**(Min. 6 / Max. 25)**



## YOUTH TENNIS

### 10 & Under Tennis

The scaled-to-size equipment and playing area allow children to rally and play the game, increasing the likelihood that they will return to the court and continue to improve!



#### MONDAYS

**Session 1 Spring:** April 20 – May 18 (Make-up 5/25)

**Session 2 Summer 1:** June 1 – June 29 (Make-up 7/6)

**Session 3 Summer 2:** July 13 – Aug. 10 (Make-up 8/17)

**Ages: 5 – 6:** 4:45 pm–5:30 pm

**Ages: 7 – 8:** 5:30 pm–6:15 pm

**Ages: 9 – 10:** 6:15 pm–7:15 pm

**\$75 R / \$80 NR**

**(Min. 3 /  
Max. 12)**

**Instructors:** PennSuburban Community Tennis Assoc.

**Location:** Montgomery County CC – Tennis Courts

## TENNIS HAVEN

**INSTRUCTOR: LIZ BALDASANO, PTR**



### Individual Instruction - Ages 10-17

Individual instruction available by appointment:

**\$64 R / \$69 NR** for one 50-minute lesson.

**Wednesday, April 22 – Sunday October 11 8:30AM – 7PM.**

### Jr. Group Lessons - Ages 11-14

Designed for those wanting to develop sound stroke mechanics and learn the basic scoring/rules of tennis in a fun, group environment. Each lesson will include fun drills and games applying the strokes learned.

**TUESDAYS, APRIL 28 – MAY 26 from 5:30PM-6:20PM**

**\$85 R / \$90 NR (Min. 3 / Max. 8)**

Located at Montgomery CCC Tennis Courts. Learn more online at [www.WhitpainRec.com](http://www.WhitpainRec.com).

**AGES  
18+**

## ADULT TENNIS

**Location:** Montgomery County Community College, Tennis Courts

*Contact the instructor before dropping in to ensure space is available.*

*Register anytime - classes are ongoing! Have a question or interested in dropping in on a class? Contact Liz Baldasano, PTR at 267-210-7632 or send an email to [liz4tennis@gmail.com](mailto:liz4tennis@gmail.com).*



### Tennis for Fitness®

A blend of fitness and tennis! This class focuses on movement, light stretching, and conditioning. Go at your own pace, this is a noncompetitive class.

**TUESDAYS, APRIL 28 – JUNE 2**

**6:30 – 7:20PM**

**Drop-In Only, Single Class Fee:**

**\$17 R / \$20 NR**

### Adult Drill & Match

ADM - stroke production, serve practice, and match play. Players separated by skill level. For low intermediate players, those who have taken Fundamentals, or those with prior tennis experience.

**THURSDAYS, APRIL 30 – JUNE 4**

**6:30 – 7:45PM**

**\$100 R / \$105 NR, Package Price**

**is for 4-75 Minute Classes**

**Drop-In Fee: \$27 R / \$30 NR**

## INDIVIDUAL INSTRUCTION

Individual instruction available by appointment: \$64 R / \$69 NR for one 50-minute lesson. Located at **Montgomery County Community College Tennis Courts. Wednesday, April 22 – Sunday, October 11.** Learn more online at [www.WhitpainRec.com](http://www.WhitpainRec.com).





## YOUTH PICKLEBALL - Instructor: Reisel Rackets

**AGES: 9-17**

**Youth & Teen Learn to Play:** Our Youth and Teen Learn to Play program introduces players to the basics of the game in a supportive and engaging environment. Participants will learn the rules, scoring, and court etiquette while building fundamental skills such as serving, volleying, and teamwork. With a focus on fun, fitness, and sportsmanship, this program is perfect for kids who are new to the game or looking to improve their skills.

### SATURDAYS;

**SESSION 1: April 4 – 25**
**SESSION 2: May 9 – June 6 (No class May 23)**
**9 – 9:45AM • \$100 R / \$105 NR**
**Location: Wentz Run Park – Pickleball Courts**
**Min. 4 / Max. 20**


**Youth & Teen Pickleball League:** For the first five (5) weeks of league play, each team will play a different opponent, playing a minimum of three games. Each game will be played to 11, win by 2. During the 6th week of league play we will host the semi-finals and final matches. Players must have a basic understanding of pickleball.

### THURSDAYS;

**SPRING LEAGUE: April 16 – May 21**
**SUMMER LEAGUE: June 4 – July 16**
*(No league July 2)*
**5:15 – 6:15PM • \$50 R / \$55 NR**
**Location: Wentz Run Park – Pickleball Courts**
**Min. 4 Teams (8 participants) /**
**Max. 12 Teams (24 participants)**

## ADULT PICKLEBALL - Instructor: Reisel Rackets

**AGES: 18+**

**Adult Beginner Clinic:** The beginner clinic will consist of learning the rules of pickleball, basic shot techniques, court positioning and strategy. Participants will learn the fundamentals of serving, dinking, and volleying, including proper paddle grip and grip pressure. Each session builds off the prior week's instruction and there will be game play to incorporate what was learned each week.

### SATURDAYS; SESSION 1: April 4 – 25

**SESSION 2: May 9 – June 6 (No class May 23)**
**10 – 11AM • \$120 R / \$125 NR**
**Location: Wentz Run Park – Pickleball Courts**
**Min. 4 / Max. 20**

**Adult Intermediate Clinic:** The intermediate clinic will focus on improving specific shots such as the dink, third shot drop, offensive lob, and overhead smash. Participants will learn how to transition from defense to offense along with court positioning and strategy. Each session builds off the prior week's instructions and there will be game play to incorporate what was learned each week.

### SATURDAYS; SESSION 1: April 4 – 25

**SESSION 2: May 9 – June 6 (No class May 23)**
**11:15AM – 12:15PM • \$120 R / \$125 NR**
**Location: Wentz Run Park – Pickleball Courts**
**Min. 4 / Max. 20**


**Adult Pickleball League:** For the first six (6) weeks of league play, each team will play a different opponent, playing a minimum of three games. Each game will be played to 11, win by 2. During the seventh week of league play we will host the semi-finals and final matches. Players must have a basic understanding of pickleball.

### THURSDAYS;

**SPRING LEAGUE: April 16 – May 28 | SUMMER LEAGUE: June 4 – July 23 (No league July 2)**
**6:30 – 7:30PM • \$65 R / \$70 NR**
**Location: Wentz Run Park – Pickleball Courts**
**Min. 4 Teams (8 participants) / Max. 12 Teams (24 participants)**

### Cardio Pickleball:

Get your heart pumping while having fun on the court! Cardio Pickleball combines fast-paced drills, continuous movement, and exciting rally play to give you a great workout while sharpening your pickleball skills. Designed for all ability levels, this class focuses less on scoring and more on keeping the ball in play—ensuring a fun, high-energy session that boosts fitness, agility, and endurance. Register for each class individually.

### MONDAYS;

**SPRING SESSION 1: April 6 – 27**
**SPRING SESSION 2: May 4 – June 1**
*(No class on 5/25)*
**SUMMER SESSION 1: June 8 – June 29**
**SUMMER SESSION 2: July 13 – August 3**
**5:30 – 6:30PM**
**\$35 R / \$40 NR (Per one class)**
**Location: Wentz Run Park–**
**Pickleball Courts**
**Min. 6 / Max. 12**



## ADULT PROGRAMS

### Montgomery County Senior Games

The Montgomery County Senior Games combine sports and recreation with fellowship among everyone involved. Events are held at various locations throughout Montgomery County, including Montgomery County Community College and Wentz Run Park.

#### 2026 MONTGOMERY COUNTY SENIOR GAMES

**DATES: MAY 4-8 • AGES 50+**

**\$30 Montco residents / \$45 Non-residents of Montco\***

*Includes lunch on Friday\**

*Registrants must be 50 years or older by 12/31/26 to be eligible to participate. Learn more and register online at [www.MontcoSeniorGames.com](http://www.MontcoSeniorGames.com)! Registration begins on Wednesday, February 25 at 9AM.*



#### EVENTS INCLUDE:

Archery • Badminton • Basketball  
(foul shot & hot shot) • Billiards • Bocce  
Bowling • Cornhole • Darts  
Football & Softball Throw • Golf  
Horseshoes • Orienteering  
Par3 and Mini Golf • Pickleball  
Running • Shuffleboard • Stationary Bike  
Swimming • Table Tennis  
Tennis • Walking

### MONDAY YOGA with Matthew Mitlas

Join yoga instructor Matthew Mitlas for his signature balanced blend of movements that stretch, strengthen, increase breath capacity, and quiet the mind. Matthew will focus on postures that bring relief to common areas of the body such as the hips, low back, neck and shoulders, while also sharing about uplifting yogic philosophy and meditation.

#### MONDAYS

**MARCH 16 – MAY 4 (No class March 30)**  
**JUNE 1 – JULY 13 | JULY 20 – AUGUST 31**

*7-week sessions • \$83 R / \$88 NR*

**7:40 - 8:40PM • Ages: 16+**

**Location: The Manor House at  
Prophecy Creek Park (Min. 6 / Max. 18)**

### WEDNESDAY YOGA with Karen Strawhacker

*This program is open to all levels, including beginners.*

**Yin Yoga Series** - Yin Yoga is a complement to the more recognizable Yan or Yang practice. While the Yan/Yang practice addresses the elastic tissues of the muscles, Yin takes a deeper dive into the inelastic tissues of the fascia, tendons, ligaments and bones. Yin embraces the concept of freeing up the energy channels, also known as meridians.

#### WEDNESDAYS

**March 25 – May 13 | \$95 R / \$100 NR, 8-week session**

**May 20 – July 8 (No class June 24) |**

**\$83 R / \$88 NR, 7-week session**

**Yin Yoga Series: July 22 – Aug 19 |**

**\$60 R / \$65 NR, 5-week session**

**Drop-In Fee: \$15 • 7:40 - 8:40PM • Ages: 16+**

**Location: The Manor House at Prophecy Creek Park  
(Min. 6 / Max. 18)**

### ZUMBA

Zumba incorporates traditional dance into a fun group exercise! Burn up to 400 calories during class and improve your health, mood, and coordination. Great way to lose weight and stay fit!

**TUESDAYS: APRIL 7 – MAY 12 | JUNE 2 – JULY 7**

**JULY 28 – SEPTEMBER 8 (No class on September 1)**

**7:40 – 8:40PM • AGES: 18+ • \$55 R / \$60 NR**

**Location: The Manor House at Prophecy Creek Park**

**Instructor: Jacqueline Brooks • Min. 6 / Max. 20**

### WHITPAIN WALKERS



The Whitpain Walkers is a weekly walking club that meets at various walking trails in the area. This program is ideal for individuals who want to discover great walking trails nearby, want to begin and/or continue a walking routine, or are just looking for something new to do during the day! The walking club is a non-competitive group that encourages healthy lifestyles, exercise, being in nature, and socializing with others.

**DATES: APRIL 8 – MAY 29**

**(8 Weeks/ twice weekly walks)**

**Time: 9AM • Ages: 18+**

**Annual Fee: \$15 R / \$20 NR**

**Locations: Various - visit**

**[www.whitpainrec.com](http://www.whitpainrec.com) to join  
registration list**





# Retirement IS ABOUT Balance



**Russell R. Valante**  
Executive Vice President/  
Investments

Retirement involves striking a delicate balance between cash flow, spending, investment risks, lifestyle needs, and many other factors. If your retirement is feeling off-balance, it's time to get the advice you need.

Russell Valante of Janney Montgomery Scott has been helping people reach their retirement goals for nearly 20 years. He can provide a thorough analysis of your unique retirement needs, help you set goals, and create a plan to help you stay on balance to meet them. Contact Russell today to discuss how he can help you find the right balance for your retirement.

Janney Montgomery Scott LLC  
1767 Sentry Parkway W, Suite 110, Blue Bell, PA 19422-2217  
215.619.3920 toll-free: 888.567.0022  
rvalante@janney.com [www.RussellValante.com](http://www.RussellValante.com)



# WHITPAIN DOG PARK

**WE HAVE MOVED!!! The Whitpain Dog Park is now  
at our new location at I610 Arch Street Road!**



## ANNUAL MEMBERSHIP FEES

- 2026 fees: **\$35 R / \$50 NR**  
Each additional dog (3+):  
**\$15 R / \$20 NR**
- FEES PRORATED STARTING 8/31:  
**\$20 R / \$30 NR (INCLUDES 2 DOGS)**
- Memberships expire on 12/31. you can register for the following year starting in December.

## REQUIRED DOCUMENTS

- Current vaccination records (rabies, bordetella, distemper)
- Valid PA dog license (lifetime or annual)
- Registration form and waiver (if you didn't pre-register and pay online)
- Orientation quiz (new members only)

## WHITPAIN DOG PARK MEMBERSHIP

For the safety, accountability, and enjoyment of users, Whitpain Dog Park is for registered members only. A key fob or access code is required to enter the park.

## HOW TO REGISTER

**Memberships are good through the end of 2026!** Registration for 2027 will open in December. Pay membership dues online! You can also leave a check (made out to Whitpain Township) and paperwork in the night drop box in the Township Building vestibule, or administration building during business hours.

After you pay online at [www.whitpainrec.com](http://www.whitpainrec.com), please email, [park&rec@whitpaintownship.org](mailto:park&rec@whitpaintownship.org), or fax, 610-277-2209, over the required paperwork (orientation quiz, vet records, and county license). Once we receive your information, we will activate a key fob for you and the 5-digit access code you provide when you register. We will notify you when your fob is ready to be picked up and your access code is activated.

## RENEWING MEMBERS:

Pay online to renew your membership. Please email, [park&rec@whitpaintownship.org](mailto:park&rec@whitpaintownship.org), or fax, 610-277-2209, your updated vaccination records, and your current county dog. You do NOT need to complete the orientation quiz. Your access code and key fob will be activated only after we receive the updated vet records and county license.

## Thank You Dog Sponsors!!



**CADDICK UTILITIES**  
AMBLER, PA  
215-653-0240



**Kaplin Stewart**  
Attorneys at Law





*Proudly serving Whitpain Township for 34 Years*

# Golden Sea

金海 Chinese Restaurant

## HOURS:

Tuesday to Thursday:  
11:30am to 9:30pm

Friday to Saturday:  
11:30am to 10:30pm


Sunday: 12:00pm to 9:30p.m.

Closed Mondays

**Now Open For  
Take Out Only!**

1301 Skippack Pike | Blue Bell, PA 19422 | 610-292-8881 | 610-292-8882

[www.goldenseabluebell.com](http://www.goldenseabluebell.com)



**ANTONI B. Urban**  
FUNERAL HOME, INC.

Peter "Skip" Urban, Supervisor  
Peter A. Urban, Jr., Funeral Director

## Honor a Life Well Lived

1111 South Bethlehem Pike Ambler, PA  
215-646-8556    [UrbanFuneralHome.com](http://UrbanFuneralHome.com)

# Elliott Greenleaf

Attorneys at Law

925 Harvest Drive, Suite 300, Blue Bell, PA 19422

215-977-1000 / [www.elliottgreenleaf.com](http://www.elliottgreenleaf.com)

Blue Bell / Wilkes-Barre / Wilmington



## The Best Homes Have an Impriano Roof!®

ROOFING | SIDING | WINDOWS | GUTTERS | DOORS | SKYLIGHTS

**Local: (215) 654-1990**  
1662 DeKalb Pike, Blue Bell, PA 19422

**REPLACEMENT DIVISION**

UP TO **\$500 Off**

Any Complete Roofing or  
Siding or Window Job

Present Coupon At Time Of Contract Acceptance.  
Not Valid With Any Other Offer.  
\*\$500 Off Coupons Based on 5%

**NEW INFRARED TECHNOLOGY**

**10% Off** SERVICE DEPARTMENT

Same Day Roofing & Siding Repairs  
Must Call Before 9am Mon-Fri

Present Coupon At Time Of Contract Acceptance.  
Not Valid With Any Other Offer.

CELEBRATING **52 Years**



ICC  
INTERNATIONAL CODE COUNCIL

Call For 52 years discount! Accountability plus!

[www.impriano.com](http://www.impriano.com)



960 Wentz Road  
Blue Bell, PA 19422

Presort Standard  
U.S. Postage  
PAID  
Permit No. 550  
Lehigh Valley, PA



This Community Newsletter is produced for  
Whitpain Township by Hometown Press  
215.257.1500 • All rights reserved®

To Place An Ad Call Mr. Kim Kriebel At Hometown Press • 267-371-2833 • [klk14htp@gmail.com](mailto:klk14htp@gmail.com)

**\$5 off**  
your purchase  
of \$30 or more  
P.J. WHELIHAN'S  
PUB + RESTAURANT  
PRESENT OFFER AT TIME OF PURCHASE  
799 Dekalb Pike, Blue Bell



Casual Parties

**Awesome  
Outdoor Patio**

Call Today 610-272-8919

**CELEBRATING OUR 50<sup>TH</sup> ANNIVERSARY**  
Realize Greater Heating & Air Conditioning Efficiency...  
**AND SAVE UP TO 40%**  
**Family Owned & Operated Since 1972**  
**INSTALLATION & SERVICE ON ALL MAJOR BRANDS**

**CC&**  
Heating & Air Conditioning  
Installations • Sales • Service  
Maintenance Contracts

**READER'S CHOICE**  
Best HVAC Contractor  
15 Years in a Row

**\$300 off**  
ANY HEATING & A.C./HEAT PUMP  
Combined System Installed  
Mention This Ad  
Heating • A/C • Heat Pumps  
Not good with any other offers  
One coupon per job  
Coupon valid only at time of sale

**Financing Available**

**Free Estimates On New Installs**

800 Hagey Rd, Souderton • Fast Emergency Service  
267-204-3348 • [www.cc-hvac.com](http://www.cc-hvac.com)

Edward Jones

[edwardjones.com](http://edwardjones.com) | Member SIPC

Want to become a  
more tax-efficient  
investor?

The right investment strategy  
could potentially lower next  
year's tax bill. Talk to a financial  
advisor today to learn how.



**Elena M Sickles**  
CFP®  
Financial Advisor

1061 Dekalb Pike Suite 101  
Blue Bell, PA 19422  
610-279-4286

FPA-ENRSP-A-6-AD EXP 30 NOV 2021 © 2021 ALLSPRNG prmrsl