

FALL/WINTER 2025-26

Welcome to WHITPAIN TOWNSHIP

Montgomery County, Pennsylvania



Parks & Recreation Improvement Projects throughout Whitpain Township!

Play Pods coming to Mermaid Park

Pickleball Courts Construction
at Wentz Run Park

Wissahickon Park Construction

Dog Park Relocation
to Mermaid Park

New Tennis Courts at
Montgomery Community College

INSIDE THIS ISSUE

Manager's Message	3
Contact Information.....	4
Community Center Moves Forward.....	5
Single Use Plastic Bag Ordinance	6
CSFC Fire Expo Set for October 3.....	6
Charge into Fire Safety	7
Park Projects Progressing	8
Stormwater: Where it Flows, Everything Goes	10



PARKS & RECREATION	12-28
Discount Tickets.....	13
Special Events	14-15, 18-19
Whitpain Community Festival.....	16-17
Workshops.....	20
Youth Programs	21-24
Youth Tennis.....	25
Adult Tennis	26
Adult Programs	27-28
Whitpain Dog Park.....	29

Learn about fun activities and more at www.WhitpainRec.com.
Visit our website at www.whitpaintownship.org and sign up for the Whitpain Wire

DESIGN • BUILD • MAINTAIN



For all your outdoor living spaces!

Garden care

Masonry

Outdoor kitchens

Fireplaces

Horticultural services

Ponds & water features

Rain gardens & bioswales

Green roofs

215-247-2992 • DavidBrothers.com • 610-584-1550

DO YOU HAVE A GOOD
GRASP OF YOUR
FINANCIAL FUTURE?

Get a complimentary Financial Analysis from a multi-Generational team
with over 40 years of Financial Planning and Investment experience.



Michael Patitucci III
Financial Advisor



Michael Patitucci | Executive
VP / Wealth Management,
Financial Advisor

PATITUCCI WEALTH MANAGEMENT GROUP

Janney Montgomery Scott LLC, 1767 Sentry
Parkway West, Suite 110, Blue Bell, PA 19422
www.Patitucci.com | 215.619.3915



For more information about Janney, please see Janney's Relationship Summary (Form
CRS) on www.janney.com/crs which details all material facts about the scope and terms of
our relationship with you and any potential conflicts of interest.

© JANNEY MONTGOMERY SCOTT LLC • MEMBER: NYSE, FINRA, SIPC • REF. 1822900-0225



Rosemary Camponovo, PROPRIETOR
BROAD AXE CORNER
46 West Skippack Pike | Broad Axe, PA 19002
610.272.1727



Fine Jewelry
Custom Design
Expert Jewelry Repair
Appraisal
Upscale Fashion Jewelry
Accessories
Gifts
Buy & Sell Precious Metals



Like Us on Facebook,
Twitter & Pinterest



Clarke Gallagher Barbiero Amuso & Glassman Law

Montgomery, Bucks & Delaware Counties and Surrounding Areas

215-633-1890 - www.cgbaglaw.com

Municipal - School - Zoning & Land Use - Tax Assessments - Personal Injury - Estates

Manager's Message:



In 2025 a great deal of progress has been made on some long-term park projects throughout the Township. After years of planning, numerous public meetings, and securing over \$2.4 million in state and federal grants, shovels finally went into the ground at Wissahickon Park in West Ambler this spring. If construction crews have favorable weather, most of the construction should be completed later this year.

Work is also ongoing on an inclusive playground in Mermaid Park. To save money and operate most efficiently, Whitpain's Public Works crews are completing most of the site work for this project and a contractor will install the playground equipment. This project is scheduled to be completed sometime in the first quarter of 2026, weather permitting.

As work continues on these projects and residents await new park experiences, we will still be hosting all our traditional autumn events this fall. Our most popular event of the year, the Community Festival, will be held on Saturday, September 27 on the campus of Montgomery County Community College. As always, the day will feature fun for all ages and includes children's games, pony rides, food trucks, a beer garden, live music, and a fireworks show.

In late October, our Parks & Recreation Department will hold hayrides at Prophecy Creek Park. Also, Centre Square Fire Company's Annual Fire Expo will be held on the evening of Friday, October 3 at Centre Square Fire Company.

Please check out this newsletter for more information about our ongoing park projects, along with a host of additional articles. Also, please remember to sign up for our weekly electronic newsletter the Wire at www.whitpaintownship.org.

Eric Traub, Manager
Whitpain Township

BUYING or SELLING a HOME?

LET'S HAVE COFFEE!

Kim Zampirri, GRI, CRS
Associate Broker, Realtor®

RE/MAX

Outstanding Agents
Outstanding Results®

RE/MAX
Central

Office **215.643.3200**
Cell **215.280.7752**
731 Skippack Pike
Blue Bell, PA 19422
Kim@KimZRealEstate.com
KimZRealEstate.com

Kim Zampirri

Follow KimZRealEstate

[f](#) [in](#) [t](#)

**Guaranteed
24-hour
emergency
service for our
customers!**

215-391-1830
WaltonInc.com

★ Fuel Oil ★ A/C
★ Service ★ Sales
★ Propane ★ Heating

WALTON
1921 100 YEARS 2021

Visit us online
for money-saving
coupons!

[f](#)

[in](#)

[t](#)

WHITPAIN TOWNSHIP CONTACT INFORMATION

960 Wentz Road • Blue Bell, Pennsylvania 19422 • Phone: 610-277-2400 • Fax: 610-277-2209

www.whitpaintownship.org • www.whitpainrec.com

Sign up for the Whitpain Wire

BOARD OF SUPERVISORS

Scott M. Badami, *Chair*

Kimberly J. Koch, *Vice Chair*

Jeffrey Campolongo, *Secretary*

Sara S. Selverian, *Treasurer*

Joyce M. Keller, *Assistant Secretary*

Local government of the Commonwealth of Pennsylvania is divided into a number of classifications i.e., cities, townships, and boroughs. There are two categories of townships in the Commonwealth – those identified as townships of the first class and those known as townships of the second class. Second class townships make up the greatest bulk of municipalities in Pennsylvania. Whitpain Township is a Township of the Second Class. It is governed by a five-member Board of Supervisors elected at large by the electorate. Most, if not all, of the executive and legislative powers allocated to Whitpain Township in the State Second Class Township Code are vested in the Board of Supervisors. The Board of Supervisors is empowered to appoint professionals to assist them in the operation of the Township and to furnish advice and counsel on technical matters. Additionally, the Board appoints all of the members of the various advisory boards and commissions as well as the Zoning Hearing Board and the Planning Commission.

The levying of Township taxes and the appropriations to the various departments and subsidiary boards and commissions are the responsibility of the Board of Supervisors. During the months of November and December, public hearings are held for the purpose of reviewing the budget for the following year. Residents are encouraged to attend these meetings and to review the proposed Township budget during that time.

CODE ENFORCEMENT/ZONING

- Fences
- Fire Alarms & Fire Protection Permits
- Flood Plain
- Signs
- Mechanical
- Bldg, Electrical, Plumbing, Mechanical Permits
- Plot Plans
- Property Uses
- Setbacks
- Home Use Occupations
- Variance/Special Exceptions

PARKS AND RECREATION

- Community Festival
- Concerts & Movies at Wentz Run Park
- Contracted Programs
- Dedication Program
- Discount Tickets
- Montco Senior Games
- Park Facility and Field Permits
- Park and Open Space Board
- Programs, Activities, & Events
- Seasonal Employment
- Shade Tree Commission
- Sponsorship Opportunities
- Summer Day Camp
- Trails and Open Space
- Volunteer/Community Service

POLICE

- Animal Control
- Bicycle Registration
- Block Parties
- Fingerprinting
- Gun Permits
- Parking Tickets
- Reporting Crime
- Road Closures
- Solicitation Permit
- Traffic Lights
- Non-Emergency: (610) 279-9033

FINANCE/SEWER

- Accounts Payable
- Audit Questions
- Human Resources
- Invoices
- **SEWER**
- Certifications
- Sewer Bills/Payment

ENGINEERING/PLANNING

- Residential Permit Inquiries (Additions, Pools, Driveways, Patios)
- Commercial/Institutional Permit Inquiries
- Site Plans/Survey Questions
- Stormwater Drainage Concerns
- MS4/TMDL Administration & Management
- GIS Mapping/Township Maps
- Grading and ICP Permits
- Township Roadway Occupancy Permits
- Site, Escrow and Permit Inspections
- Traffic Management/Traffic Signal Operations and Maintenance
- Requests for Information for Land Developments and Subdivisions
- Sanitary Sewer Design & Connection Requests
- Easement/Right-of-Way Informational Requests
- Land Development, Subdivision & Waiver Reviews
- Regulatory Agency Inquiries
- Ordinance Development and Enforcement
- Municipal Improvements Projects (Parks, Roadways, Bridges, Utility Infrastructure)

PUBLIC WORKS

- Christmas Tree Collection
- Fences
- Leaf Collection
- Maintenance-Building, Grounds, Park
- PA 1 Calls
- Potholes
- Streets- Paving, Snow, Road debris
- Street Signs
- Storm & Sanitary Sewer - blockage/odor
- Sweeping

FIRE

- Donation for Ambulance
- Prevention Education
- Safety Inspections
- Teacher Training/Fire
- Emergency Management
 - Chemical Spills
 - Fire
 - Floods
 - Power Outages
- Second Alarmers (SARS) Info Calls
(215) 659-1885

MISCELLANEOUS

Water Companies

Ambler Water: 215-646-1000
PA American: 1-800-717-7292
North Wales Water: 215-699-4836

Montgomery County Courthouse:
610-278-3000

District Court 38-1-21: 215-646-8201
Voter Registration: 610-278-3280

Electronic & Hazardous
Waste Collection: 610-278-3618
Trash/Recycling:
Contact your trash hauler

Tax Collector: 610-492-9191
Walk-Ins Tuesday & Thursday
Call for appointment
Berkheimer: 610-279-7500

Power Outages - PECO:
1-800-841-4141
Comcast - bill/account information:
610-279-7200

Whitpain Rec Association:
playwra.com
Ambler/Whitpain Football & Cheering:
www.awtrojans.com
Wissahickon Lacrosse Club:
www.WissLAX.com

Community Center Moves Forward

Steady progress is being made on Whippain's new community center as the Township awaits permitting approval from outside agencies before moving on to publicly bidding the project and construction. Residents got a first glimpse at the vision for the building when an animated walkthrough of the community center was presented at a Board of Supervisors' meeting in May.

The walkthrough video is available on the Township's website and shows a facility with two playing courts, an elevated walking track, fitness center, a large community room, which is divisible into two smaller rooms, a welcoming lobby, offices for staff, and inviting outside spaces.

The facility is made possible by a generous \$10 million donation and bolstered by a \$1.7 million state grant. The community center will be located at the current dog park alongside Route 202, but before construction begins, the dog park will be relocated to Mermaid Park.



Abbey Plumbing & Heating

Quality plumbing and heating service since 1976



24 Hour Emergency

Phone: 215-643-6645

Fax: 215-643-2216
www.abbeyplumbing.com



flirt
women's boutique

flirt women's boutique

994 DeKalb Pike
Blue Bell, PA 19422

484-231-8132

flirtwomensboutique@gmail.com
flirtboutiquebluebell.com

STATE REPRESENTATIVE LIZ HANBIDGE

Working for You!

SENIOR SEPTA PASSES, PENNDOT FORMS, VITAL RECORDS, NOTARY SERVICES, STATE TAX FORMS, AND ALL OTHER STATE SERVICES.



toll free: 833-787-3927



610-277-3230 REPHANBIDGE@PAHOUSE.NET 1098 W. SKIPPACK PIKE BLUE BELL, PA 19422 WWW.PAHOUSE.COM/HANBIDGE



Blue Bell Dental Centre

Office Hours by Appointment

Mark L. Bidwell, DMD

Phone: 610-279-4277
Fax#: 610-279-3624

www.bluebelldentalcentre.org

1213 Skippack Pike
Blue Bell, PA 19422





Single Use Plastic Bag Ordinance

You may have noticed signs at retailers across the Township describing upcoming limitations on single-use plastic bags. Looking toward a more sustainable future, the Board of Supervisors passed an ordinance to minimize single-use plastic bags, utensils, and expanded polystyrene (aka Styrofoam™).

Beginning on November 1, retail establishments will no longer provide single-use plastic bags or polystyrene containers to customers. However, retail establishments may provide customers with recyclable paper bags for a charge of not less than \$0.15 per bag. Additionally, plastic utensils will only be available upon request from a customer.

By promoting the use of reusable alternatives, the Township aims to curb litter in our community, protect local waterways, reduce greenhouse gas emissions and reduce solid waste generation.

CSFC Fire Expo Set for October 3

Centre Square Fire Company's (CSFC) Annual Fire Expo will be held on **Friday, October 3** from 6:00 to 8:30 pm at Centre Square Fire Company in Blue Bell. This free family event features demonstrations, antique fire engines, fire prevention exhibits, displays from neighboring fire companies, fire safety tips, refreshments, prizes and much more. The rain date for this event is Saturday, October 4. For more information please visit Centre Square Fire Company's website at www.csfc33.com.

Make Your Home Your Favorite Place

Harth Builders can improve
the beauty and comfort of
every room in your home —
both inside and out.

HARTH
DESIGN | BUILD | REMODEL

HarthBuilders.com | 215.654.0364

812 N. Bethlehem Pike
Lower Gwynedd, PA
PA #0249



CHARGE into Fire Safety™

Lithium-Ion Batteries in Your Home

Most of the electronics we use in our homes every day are powered by lithium-ion batteries. In fact, most everything that's rechargeable uses this kind of battery.



e-bikes



hoverboards



tablets



cordless vacuum cleaners



e-vehicles



power tools



mobile phones



remote control cars



e-scooters



laptops



e-cigarettes/
vapes



drones



golf carts



smart watches



headphones



toys

LITHIUM-ION BATTERIES store a lot of energy in a small place. These batteries can overheat, start a fire, or explode if overcharged or damaged. By learning how to **BUY**, **CHARGE**, and **RECYCLE** these batteries safely, you can help prevent a fire in your home.



BUY only listed products. When buying a product that uses a lithium-ion battery look for a safety certification mark such as UL, ETL, or CSA. This means it meets important safety standards.



STOP using your device right away if the battery smells weird, gets too hot, makes popping noises, changes in shape or color. If it is safe, move the device away from anything that can catch fire. Call **9-1-1**.



CHARGE devices safely. Always use the cables that came with the product to charge. Follow the instructions from the manufacturer. Buy new chargers from the manufacturer or one that the manufacturer has approved.



RECYCLE batteries responsibly. Don't throw lithium-ion batteries in the trash or regular recycling bins because they could start a fire.



CHARGE your device on a hard surface. Don't overcharge your device. Unplug it or remove the battery when it's fully charged.



RECYCLE your device or battery at a safe battery recycling location. Visit **call2recycle.org** to find a recycling spot near you.



**NATIONAL FIRE
PROTECTION ASSOCIATION**
The Leading Information and Knowledge Resource on Fire,
Electrical, and Related Hazards

nfpa.org/education | ©2025 NFPA®



Our Intention is Fire Prevention
Whitpain Township Fire Marshal's Office
960 Wentz Road
Blue Bell, PA 19422
610-277-2400

Park Projects Progressing



Wissahickon Park

Earlier this year, Whitpain's Board of Supervisors gathered for two long-awaited groundbreaking ceremonies at Township parks. The first occurred in our West Ambler neighborhood to kickoff construction at Wissahickon Park.

When completed this winter, Wissahickon Park will feature playing courts, a grass volleyball court, a tot-lot playground for children ages 2-5, a separate playground for older children ages 5-12, and a 0.5-mile paved walking trail around the perimeter of the park. There will also be sidewalk installations to make the park accessible to the community and ample parking.

Wissahickon Park was an active Township park before it closed in the mid-1980's due to asbestos contamination. The park property is one portion of what was known as the BoRit Asbestos Site, which was used from the early 1900s to the late 1960s to dispose of asbestos-containing materials.

Whitpain has been planning for well over a decade to reopen the park once extensive work was completed to remediate the site by the US Environmental Protection Agency (EPA). This has been a lengthy process due to environmental concerns, and the Township has worked cooperatively with the EPA, PA Department of Environmental Protection, and the US Army Corp of Engineers to ensure public safety before, during, and after construction.

Extensive community discussions about the park occurred over the years at West Ambler Revitalization meetings and at meetings specifically geared toward park planning. The Township has secured two large grants, one from the Federal Government and the other from the state, to help pay for park improvements. Together these grants total over \$2.4 million and will combine with over \$1 million in Township funds to support construction.

Across the Township at Mermaid Park, work has also started on a much-anticipated project to bring a nature-based inclusive playground to the community. Seeking to move beyond simply meeting ADA accessibility requirements, the new playground will be comprised of three "pods," each offering a variety of sensory, physical and educational experiences for users.

The project is partially funded by a PA Department of Conservation and Natural Resources grant. Along with these improvements, additional parking will be added to the area and pathways from the parking area to the pods will be improved.



Mermaid Park



WELCOME

BACK TO SCHOOL

**BACK-TO-SCHOOL
LUNCHES MADE EASY!**

STOCK UP ON EVERYTHING YOU NEED—FROM FRESH FRUIT
AND SNACKS TO DELI FAVORITES AND PREPARED MEALS.

FIND IT ALL AT MCCAFFREY'S!

CENTER SQUARE SHOPPING CENTER
1301 Skippack Pike Blue Bell PA 19422
215-437-3200

Scan to check out everything
we have to offer

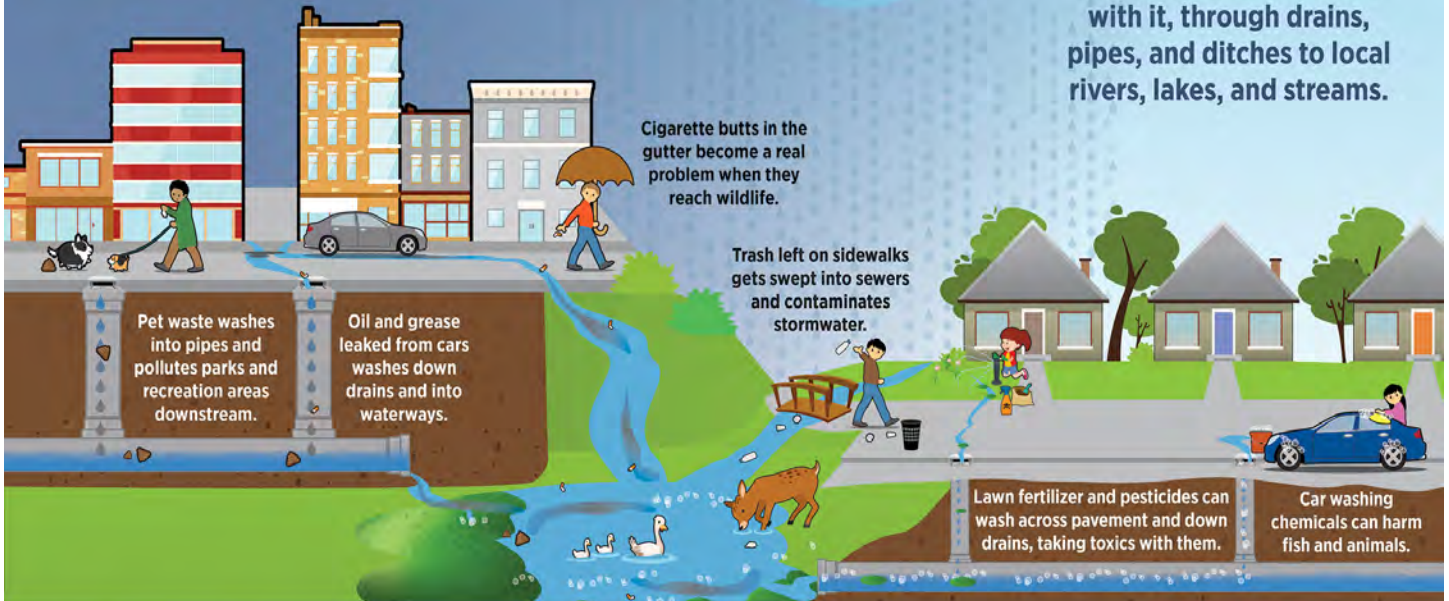


mccaffreys.com



Stormwater: Where It Flows, Everything Goes

When it rains, snows, or sleet, water hits hard surfaces and takes anything on that surface with it, through drains, pipes, and ditches to local rivers, lakes, and streams.



Where Stormwater Flows, Everything Goes



Your Business Success Shaped by Our Legal Team.

Kaplin Stewart
Attorneys at Law

Blue Bell, PA 610-260-6000 • Cherry Hill, NJ 856-675-1550
Philadelphia, PA 215-567-3120
Kaplaw.com

Trust Kaplin Stewart for a hands on approach

- Land Use & Zoning
- Construction
- Real Estate Transaction
- Business, Corporate Planning & Litigation
- Estate Planning
- Environmental
- Employment

 **GWYNEDD SQUARE**
PRESBYTERIAN CHURCH
Growing Spiritually Through Service

837 Sumneytown Pike | Lansdale, PA 19446

SUNDAY MORNING WORSHIP
8:30 AM & 10:00 AM

For information about our worship, ministries and activities visit
GwyneddSquare.org.

 @GSPChurch  @GSPChurch





BE PREPARED FOR A WINTER STORM



FEMA

FEMA V-1014/June 2018

Winter storms create a higher risk of car accidents, hypothermia, frostbite, carbon monoxide poisoning, and heart attacks from overexertion.

Winter storms and blizzards can bring extreme cold, freezing rain, snow, ice, and high winds.



Greater risk



Can last a few hours or several days



Can knock out heat, power, and communication services

IF YOU ARE UNDER A WINTER STORM WARNING, FIND SHELTER RIGHT AWAY

Stay off roads.



Use generators outside only.



Stay indoors and dress warmly.



Pay attention to emergency information and alerts.



Prepare for power outages.



Look for signs of hypothermia and frostbite.



Check on neighbors.

PARKS & RECREATION DEPARTMENT



Programs & Events

Director – Michael Richino, CPRP...Ext. 375

Assistant Director – Malcolm Smith II, CPRP...Ext. 381

Program Administrator – Lexi McKinney...Ext. 374

park&rec@whitpaintownship.org



Whitpain Township



@WhitpainTwp



@WhitpainParksandRec

MISSION STATEMENT: *The Parks & Recreation Department strives to provide a variety of programs and services to enhance the quality of life and create a sense of community. As we progress through the years, we will make every attempt to introduce programs that meet the educational, social, and recreational needs of our residents and guests.*

ACCESSIBILITY AND ACCOMMODATIONS:

Whitpain township parks and recreation is committed to actively working to make township events, trails, parks, playgrounds, sports fields, and open space easily accessible to those with disabilities. The parks and recreation department encourages and supports the participation of all guests, including guests with disabilities. We assist all guests as needed. Please contact us at 610-277-2400 to request accommodation.

At a Glance - Program Start Dates - view page number for more information

September

3	Wednesday Yoga	p28
8	PSCTA Youth Tennis Classes.....	p25
10	Whitpain Walkers	p27
11	Jump Start Hummingbird Soccer	p21
11	Tennis Haven Jr. Jr. Group Lessons	p25
13.....	USA Multi Sports	p21
13.....	USA Squirt Multi Sport.....	p21
13.....	Tennis Haven Adult Drill & Match.....	p26
13.....	Tennis Haven Tennis for Fitness.....	p26
14.....	Jump Start Hockey Sundays.....	p21
20	Young Rembrandts	p22
21.....	Broadway Bus Trip: WICKED!	p14
23	Mad Science Schools Out Activity Day	p23
24	Ambler Flower Workshop	p20
26	Big Rig Round Up	p15
27	Whitpain Community Festival	p16-p17
30	Zumba.....	p27

October

6	Monday Yoga.....	p28
7	Know Your Medicare Options.....	p20
18.....	Young Rembrandts	p22
24 & 25...	Hayrides at Prophecy Creek Park	p15
29	Wednesday Yoga	p28

November

4	Mad Science Schools Out Activity Day	p23
15.....	5K and Wellness Day	p19
15.....	Young Rembrandts	p22
18.....	Zumba.....	p27

December

3	NYC Day Trip	p18
7	Daddy Daughter Dance	p19
13	NYC Day Trip	p18

January

5	Monday Yoga.....	p28
7.....	Yin Yoga Workshop.....	p28
16.....	Mad Science Schools Out Activity Day	p23
19.....	Mad Science Schools Out Activity Day	p24
28	Wednesday Yoga	p28

February

13.....	Mad Science Schools Out Activity Day	p24
16.....	Mad Science Schools Out Activity Day	p24

PARTNERSHIP OPPORTUNITIES

Engage with the community by becoming a sponsor today! We are looking for sponsors to help offset our expenses. You will actively be helping put on great local events of your choosing. Once you become a partner, Whitpain Township will promote your business as much as possible. **Please contact us at park&rec@whitpaintownship.org if you are interested in partnering with us. We can customize a package to meet your needs!**



REGISTRATION PROCEDURES

- Register for programs online at www.whitpainrec.com or in person at the Whitpain Township Building, 960 Wentz Road, in Blue Bell, between 9 am and 4 pm.
- Registrations cannot be made over the phone.
- Registrations are processed in the order in which they are received.
- All fees are payable upon enrollment.
- No refunds or adjustments for: missed classes; discontinuing an activity; cancellation; and/or falsification of information.
- Fees will only be refunded if a program is canceled due to insufficient enrollment.
- Some programs/classes are held within a Wissahickon School District building. If the school is closed due to inclement weather or to observe a holiday, no classes will be held. School closing numbers are: #314 (Wissahickon School District) & #320 (MCCC).
- Programs rely on minimum enrollment to run. Please register at least two weeks before the start date.
- Programs may be canceled if the required minimum enrollment is not met one week before the start of a program.

Program and event dates, locations, and prices may change after the printing of this newsletter. While we do our best to ensure the program details in this newsletter are accurate, please refer to www.whitpainrec.com for the most up-to-date information.

Discount Tickets



MOVIE TICKETS

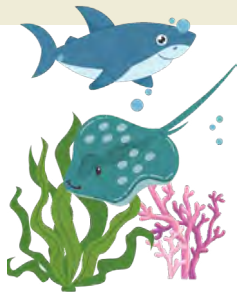
AMC Theatres.....\$10
 Movie Tavern \$9.50
 Regal/United Artist\$10



Discount tickets may be purchased at the Township Building Monday-Friday, between 9 am and 4 pm. Cash preferred, credit accepted (Visa, MasterCard, Discover). \$20 minimum for all credit transactions. Please visit www.whitpainrec.com for updated discount ticket information and online purchases for select tickets. **NO refunds or exchanges - ALL ticket sales are final.**

IN PERSON SEASONAL DISCOUNT TICKETS

While Supplies Last (Dates available to purchase until noted)



Adventure Aquarium

(Available until 12/1)

Adult (Ages 13y+) \$32
 Child (Ages 2-12) \$24

Baltimore Aquarium

(Available year-round)

Adult (Ages 21-69) \$42
 Child (Ages 5-10) / Senior (Ages 70+) \$34

Busch Gardens *(Available until 12/30)*

Ages 3+ \$75 *(Price may vary)* / 2 Day Combo with Water Country USA Ages 3+ \$90 *(Price may vary)*

Clementon Park *(Available until 9/15)*

Over 48" \$32 / Under 48" \$22

Dutch Wonderland *(Available until 9/15)*

Ages 3+ \$41

Morey's Piers *(Available until 9/15)*

Water Park \$60 / Water Park + Ride Combo \$102

Museum of the American Revolution

(Available until 12/1)

Adult (Ages 18+) \$16 / Child (Ages 6-17) \$10

Sesame Place *(Available until 12/30)*

Ages 2+ 1-Day \$50 / 2-Day \$71

Six Flags Great Adventure

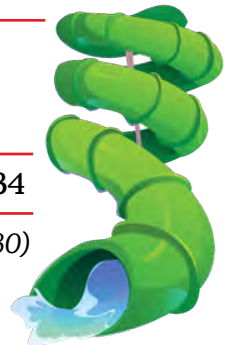
(Available until 9/15)

Theme Park \$43 / Water Park \$41

Splash Zone *(Available until 9/15) - \$34*

Water Country USA *(Available until 12/30)*

Ages 3+ \$44 *(Price may vary)* /
 2 Day Combo with Busch Gardens
 Ages 3+ \$90 *(Price may vary)*





FLOWER SHOW TICKETS

Flower Show Tickets to be available in the new year, make sure to stay tuned on our website and social media! The 2026 Flower Show will take place February 28 – March 8.

Special Events

BROADWAY BUS TRIP: WICKED!

Join Upper Gwynedd Township (UGT) and Whitpain Township for our Broadway Bus Trip! Our luxury bus will take us safely to NYC to see the Broadway show, Wicked at the Gershwin Theatre. All meals will be on your own. Registration will include the bus ride, premium seating (front mezzanine section), and driver tip. ***Space is limited! If the trip sells out, join our waitlist!**



Date:	SUNDAY, SEPTEMBER 21
Arrival to NYC:	Arrival Time at UGT Township Building: 7:15AM 9:30AM Wicked Matinee: 2:00PM (show is 2 hours and 45 minutes with a 15-minute intermission)
Departure from NYC:	5:30PM (we will meet for the bus on 8th Ave. between 49th Street and 52nd Street immediately following the conclusion of the show) Arrival back at UGT Township Building: 7:45PM
Price:	\$230 per person
Location:	Bus leaves and returns to Upper Gwynedd Township Building: 1 Parkside Place, North Wales, PA 19454



**Arrival and return times are estimated and based on traffic*

Ambler, PA

Family Owned & Operated

MCGARRY
CLEANING SERVICES
COMMERCIAL • RESIDENTIAL • JUNK REMOVAL

215-738-1543
www.mcgarrycleaning.com

**JUNK
REMOVAL**

- Residential Cleaning
- Office Cleaning
- Junk Removal

- Post Construction Cleanup
- Apartment Turnovers
- and much more

Insured & Bonded



Mike Doolin
REALTOR®

kw

I'm Here To Help!

KELLERWILLIAMS
REAL ESTATE

Cell: (215) 407-9611
Office: (215) 646-2900
Email: mikedoolin@kw.com
Website: www.mikedoolin.com

910 Harvest Drive, Suite 100, Blue Bell, PA 19422

EACH OFFICE IS INDEPENDENTLY OWNED AND OPERATED





Special Events continued

BIG RIG ROUND UP

FREE EVENT for the whole family! We will feature fire trucks, construction vehicles, tractors, and more from local businesses. Great way to get outside and have the kids feel, see and sit in their favorite trucks. Refreshments will be available for purchase!



FRIDAY, SEPTEMBER 26

5:30 pm – 8:00 pm

Location: Montgomery County Community College

Morris Road Lot: 340 DeKalb Pike Blue Bell, PA 19422



Once again, we are offering a “minimal noise” half hour from 5:30 pm – 6:00 pm.
During this time, we are requesting no horns/sirens.

HAYRIDES AT PROPHECY CREEK PARK

Join us for Hayrides at Prophecy Creek Park! Hay wagons take passengers to the upper field for a bonfire, a spooky storytelling, and a witch serving up hot cider out of a cauldron! A fun, festive, family event! Glow necklaces are provided by Whitpain Police Department on a first come, first serve basis.



FRIDAY, OCTOBER 24 AND SATURDAY, OCTOBER 25

6:00 pm – 9:00 pm

\$10 for ages 12+

\$5 for ages 3-11

FREE for children 2 and under

Location: Prophecy Creek Park

205 West Skippack Pike, Ambler, PA 19002



**CARDIOLOGY CONSULTANTS
OF PHILADELPHIA**

Outstanding cardiac care in
the heart of Montgomery County

www.ccpdocs.com

LOCATIONS

CCP Blue Bell
Phone (610) 279-7696

CCP Collegeville
Phone (610) 831-0300

CCP East Norriton
Phone (610) 279-1370

CCP Norristown
Phone (610) 272-3253



**Bob McGrath's
Tree Service, LLC**

Your tree will fall for us
(you will too, when you see our prices)
Fully Insured • Free Estimates

215-784-9124 • 610-292-9806
721 Cathcart Road • Blue Bell, PA 19422



Foley Hillsley
Group



SATURDAY, SEPTEMBER 27, 2025

FREE ADMISSION

Montgomery County Community College
340 Dekalb Pike, Blue Bell, PA 19422

The 2025 Whitpain Community Festival will feature old and new attractions. Hayrides, health fair and bone marrow drive will all continue. Kid's favorites such as inflatable rides, pony rides and petting zoo are still on. For the parents we have vendor booths, food trucks, and beer gardens. Musical acts this year include Andorra and our headliner LIMA BEAN RIOT. The event concludes with a fireworks display.

SCHEDULE OF EVENTS:

Friday, September 26, 2025

5:30 – 8:00 PM Big Rig Round Up

We are offering a "minimal nose" half hour from 5:30 – 6:00 PM. During this time we are requesting NO horns/sirens. Parents, please help us maintain an inclusive environment and ensure your children don't honk horns during this time. Thank you for your cooperation!

Saturday, September 27, 2025

12:00 PM Vendors, Health Expo, Pumpkin Patch,
Petting Zoo, Pony Rides, Hayrides,
Children's Games, Food Trucks

2:00 – 8:00 PM Beer Garden

2:30 – 3:15 PM Ants on a Log

3:30 – 4:15 PM Fort Washington School of Rock

5:00 – 6:00 PM Andorra

7:00 – 8:00 PM Lima Bean Riot

8:15 PM Fireworks

Whitpainfestival.com

A Special Thank You To Our Event Sponsors



Matt Bradford
State Representative
70th District



Special Events continued



NYC DAY TRIP

We have teamed up with Upper Dublin (UD) Parks and Recreation for you to enjoy all that NYC has to offer. This trip includes transportation and plenty of time in NYC. The drop-off and pick-up will be on 8th Avenue, between 43rd & 45th Streets, pick-up is at 5:30 pm. The trip leaves from the Upper Dublin Library. Non-stop coach bus transportation.

WEDNESDAY, DECEMBER 3

SATURDAY, DECEMBER 13

Departing from UD Library:

7:30 am: Check-in

8:00 am: Bus leaves

Departing from NYC:

5:15 pm: Check in on 8th Avenue

5:30 pm: Bus leaves

\$70 R / \$75 NR

Location: Bus leaves and returns to Upper Dublin Library
520 Virginia Drive, Fort Washington, PA 19034

**Arrival and return times are estimated and based on traffic
(Min. 10 / Max. 25)*



Sue Cook

Account Manager

325 Sentry Parkway, Bldg 5 West Suite 200
Blue Bell, PA 19422
Bus: 610-584-6595
sue.cook.y302@statefarm.com

Eva Finlan, Agent

**Smoke
Alarms
Save
Lives!**



**Test your smoke
alarms once a
month.**

A smoke alarm can save your life in a fire. Use the test button to make sure your smoke alarms are working.

U.S. Fire
Administration

FEMA



Remember: Replace Your Smoke Alarms After 10 Years

STEINBACH VETERINARY HOSPITAL

Jonathan F. King, V.M.D., P.C.

Hours by Appointment: **215-646-0462**

120 W. Skippack Pike
Ambler, PA 19002
Fax 215-646-4388
www.steinbachvet.com



**MONTCO
CULTURAL CENTER**

2025 - 2026 SEASON

mc3.edu/CultureEvents

Tickets on sale now!





Special Events continued

DADDY DAUGHTER DANCE



This evening is for dad's* to spend an evening with the special girl in their life (their daughter)! Bring your date to an event you both won't forget! Come dressed up and ready to dance the night away with our DJ. This evening will be filled with laughter, games, contests and giveaways. Smile for the camera in the photo booth to remember the special evening for years to come. Refreshments and light Hors D'oeuvres provided (no dinner). This year's theme, a Luau Party!



SUNDAY, DECEMBER 7

4:00 pm – 6:30 pm

For dads of all ages and for daughters ages 4-10*

**Or that special man in their life! (Uncle, grandfather, stepfather)*

Price Per Person: \$25 R / \$30 NR

Registration for residents opens on MONDAY, OCTOBER 27, AT 8AM.

Registration for non-residents opens on MONDAY, NOVEMBER 24, AT 8AM.

Location: The Manor House at Prophecy Creek Park

205 West Skippack Pike, Ambler, PA 19002

SAVE THE DATE

STRIDE AND THRIVE 5K/10K

Blue Bell Rotary, Whitpain Township, & Montgomery County Community College invite you to the 2nd Annual Race and Health Fair!

Events include 5K Run and 1-Mile Fun Run/Walk (Registration required for the 5K) & Various fitness and wellness activities available.

WHEN: SATURDAY, NOVEMBER 15

Where: Montgomery County Community College Health Sciences Building

More details to follow on www.whitpainrec.com



Rotary
Club of Blue Bell



MONTGOMERY
COUNTY COMMUNITY COLLEGE

WHITPAIN TOWNSHIP
W
PARKS & RECREATION



Workshops

Ambler Flower Workshop Series – Fall Arrangement

Join us for our fall floral arrangement workshop hosted by Ambler Flower Shop. Create a festive fall flower arrangement in a pumpkin vase for your home! Instructor-led classes for floral arranging are a fun interactive group activity. We will give you all the tools and flowers to create a stunning arrangement to take home!

The price is listed per person. This includes all the flowers, supplies, and professional instruction.

WEDNESDAY, SEPTEMBER 24

6:00 PM – 7:30 PM

AGES 12+ (Ages 12-16 to be accompanied by an adult)

\$75 R / \$80 NR

Location: Wentz Run Park – Picnic Pavilion

Instructor: Ambler Flower Shop

(Min. 6 / Max. 20)



Know Your Medicare Options

Have your questions answered so you can make the right choice when planning for Medicare or Medicare Advantage decisions. During this free educational seminar, you will learn:

- How Medicare works and what it covers
- How Part D prescription cards work and how to pick the right one for you.
- The difference between Medicare supplements and Medicare Advantage plans.

This seminar is suitable for whether you have decisions to make during the upcoming open enrollment period, or just want to learn more in preparation for that time.



DelVal Senior Advisors
Independent Medicare Planning Specialists

TUESDAY, OCTOBER 7TH

6:30 PM – 8:00 PM

FREE (pre-registration preferred)

Location: WRA Clubhouse

at Centre Square Park

Presenter: Steve Pearlman, DelVal Senior

Advisors, Independent Medicare Planning Specialist

(Min. 5)

Factory Certified Collision Repair Specialists

811 DeKalb Pike
Blue Bell, PA 19422

T: (610) 277-2929 • F: (610) 277-0030

534 N. Trooper Road
Norristown, PA 19403

T: (484) 684-7220 • F: (484) 684-7372

CenterSquareMotors
collision repair specialists

www.centersquaremotors.com
info@centersquaremotors.com

Chuck Dietch, Owner

Center Square Motors is a state-of-the-art collision repair facility, serving the region since our beginning as D&C Auto Body in 1956. We provide:

- On-site car rental
- 24-hour towing service
- OEM Certified Collision Repair for Acura/Honda, Infiniti/Nissan, FCA, Alfa Romeo, Hyundai and others



YOUTH PROGRAMS



JUMP START SPORTS

Hummingbirds Soccer

Children ages 3-6 have fun and learn the basics of soccer in an age-appropriate program! Players learn dribbling, passing, trapping, shooting, defending, and positioning. Each session consists of instruction in all aspects of the game, participation in fun drills designed to teach skills, and fun, low-key, non-competitive games! Children should bring water and have shin guards; all other equipment provided.

THURSDAYS, SEPTEMBER 11-OCTOBER 16

Ages 3 – 4 5:30 PM – 6:30 PM

Ages 5 – 6 6:30 PM – 7:30 PM

\$120 R / \$125 NR

Location: Stony Creek Sports Park

Instructor: Jump Start Sports

(Min. 12 / Max. 40)



Parent Assisted Squirts: Multi-Sports®

Open the door to the thrilling world of sports with this exciting program, paving the way for your child's exploration & development. Your child will experience a variety of sports, including Lacrosse, Soccer, T-Ball, and Track & Field, all with the support and guidance of a parent. Parental Involvement: Assistance & support is required.

**SATURDAYS, SEPTEMBER 13 –
NOVEMBER 1 (Make up 11/8)**

Age 2.5..... 8:30 AM – 9:15 AM

\$205 R / \$230 NR

Location: Wentz Run Park – Gazebo

Instructor: USA Sports

(Min. 7 / Max. 12)

Hockey Sundays

SUNDAYS, SEPTEMBER 14-OCTOBER 19

Ages 4-6 9:00 AM – 10:00 AM

Ages 7-10 10:00 AM – 11:00 AM

\$120 R / \$125 NR

**Location: Stony Creek
Sports Park Hockey Rink**

Instructor:

Jump Start Sports

(Min. 12)



Our experienced coaches use a variety of innovative techniques and drills to teach children the fundamental skills of floor hockey, including puck handling, shooting, positioning, and defending. Our programs feature fun, low-key games under adult supervision, providing children with a safe and supportive environment to learn and have fun.

**Puck Handling,
Shooting, Positioning
& More**

Squirt Multi Sport®

Multi-Sports Squirts allows children to experience a variety of sports throughout the program. Our professional coaches ensure that children are engaged in fun, inclusive activities, in a positive learning environment. Players will have the opportunity to try Lacrosse, Soccer, T-Ball, and track and field. In addition to emphasizing the fundamentals of each sport, each activity is designed to improve hand-eye coordination, balance, agility, and movement. Classes will include a series of fun challenges, structured activities, and scrimmages adapted to ensure everyone achieves success.

SATURDAYS, SEPTEMBER 13-NOVEMBER 1 (Make up 11/8)

Age 3 - 4.5 Session 1: 9:20 AM – 10:05 AM

Age 4 – 5.5 Session 2: 10:10 AM – 10:55 AM

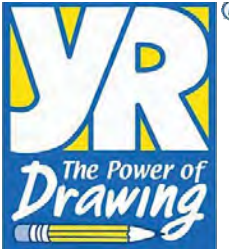
Age 4 – 5.5 Session 3: 11:00 AM – 11:45 AM

\$205 R / \$230 NR

Location: Wentz Run Park – Gazebo

Instructor: USA Sports

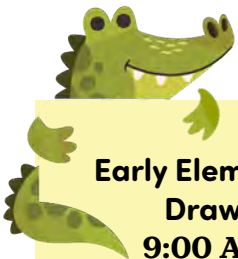
(Min. 7 / Max. 10)

**YOUTH PROGRAMS** continued**Young Rembrandts***A Different Kind of Learning. A Powerful Kind of Fun...*

Welcome to Young Rembrandts! We teach drawing with a see ~ touch ~ do method that all kids can succeed with, learn from and love! We look forward to an exciting year of classes at Whitpain Township.



The secret to our success is that children ALREADY love to draw ~ we just take their love a little further, by giving them a solid foundation that will take their drawings from doodles to confidence-boosting achievements. During our once-a-week classes, we use an innovative step-by-step approach on drawing topics your kids can relate to and learn from. Watch your child reach a new level of potential with this engaging, award-winning program. Young Rembrandts is a different kind of learning and a powerful kind of fun.

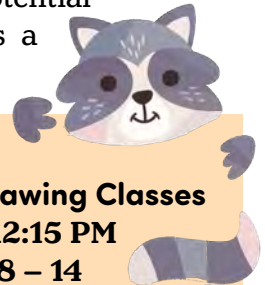


**Early Elementary School
Drawing Classes**
9:00 AM – 9:45 AM
Ages 4 – 6

Drawing Classes
10:00 AM – 11:00 AM
Ages 7 – 14



Cartoon Drawing Classes
11:15 AM – 12:15 PM
Ages 8 – 14

**Location: Whitpain Township Building, Pronczak Room "B"****Instructor: Young Rembrandts****\$80 R / \$85 NR***(Min. 5 / Max. 12)***Session 1..... September 20 – October 11****Session 2 October 18 – November 8****Session 3 November 15 – December 13 (No class November 29)**

Texting or scrolling while driving?
Deadly & illegal.

PA's Hands-Free Law: Effective June 2025



YOUTH PROGRAMS continued

Mad Science Schools Out Activity Days

**Morning: CHEMICAL CURIOSITIES**

Mix up potions and experiment with all kinds of chemical reactions! Combine chemicals to create exothermic reactions, examine our non-Newtonian fluid, make your own sidewalk chalk and crystal gardens to take home!

Afternoon: JR. GEOLOGIST

Calling all Junior Geologists! Unearth the rock cycle and discover the difference between sedimentary, metamorphic, and igneous rocks. Replicate rumbling earthquakes and explosive volcanoes, pan for gems, and create a sedimentary stacker to take home!

**TUESDAY, SEPTEMBER 23, 2025****9AM-3:30PM****Ages 6-12****Location: WRA Clubhouse****\$99 R / \$104 NR****Min. 12 / Max. 20****Morning: Eureka – SCIENCE FICTION – Light Sabers to Lasers**

Inventing means reaching for the stars! The children build wind-up space stations, and design safety capsules for payloads returning from space. They race in a robotic relay, and learn about microgravity, rockets, and space stations. The camp culminates in children building their own sci-fi inspired light sticks that they can take home, along with their dreams of the future!

Afternoon: Eureka – SHIPWRECKED!!

Inventing means survival! A deserted island is the scene for this day filled with problem-solving and adventure! Children witness a volcanic eruption, and learn how magnets can help search for shipwrecks. They have to work together to design and build bridges and boats to eventually escape the island and find their way home.

**TUESDAY, NOVEMBER 4, 2025****9AM-3:30PM****Ages 6-12****Location: WRA Clubhouse****\$99 R / \$104 NR****Min. 12 / Max. 20****Morning: CREATIVE CHEMISTS – Building With Bonds**

Become a creative chemist through the investigation of the periodic table and the atoms that make up everything around us! Make chemical connections between different atomic models using bonds to construct molecules. Whether it is long stretchy chains of molecules in the form of silly putty or structured atoms in the form of crystal gardens, find out how chemistry connects the world.

Afternoon: Jr. GEOLOGIST

Calling all Junior Geologists! Unearth the rock cycle and discover the difference between sedimentary, metamorphic, and igneous rocks. Replicate rumbling earthquakes and explosive volcanoes, pan for gems, and create a sedimentary stacker to take home!

FRIDAY, JANUARY 16, 2026**9AM-3:30PM****Ages 6-12****Location: WRA Clubhouse****\$99 R / \$104 NR****Min. 12 / Max. 20**

YOUTH PROGRAMS continued

Mad Science Schools Out Activity Days

**Morning: SLIMEY SCIENCE & SMOKEY ICE**

Build model molecules, copper-plate a nickel, and make your very own ooey gooey Mad Science slime and putty to take home! Witness fantastic dry ice demonstrations with smoking & bubbling flasks!

Afternoon: SHOCKING SCIENCE

Shocking fun awaits! Join us while we build simple circuits, make buzzers buzz, test our nerves, tinker with electromagnets, and even see a Van de Graaff generator create indoor lightning!

MONDAY, JANUARY 19, 2026**9AM-3:30PM****Ages 6-12****Location: WRA Clubhouse****\$99 R / \$104 NR****Min. 12 / Max. 20****Morning: NASA: STEM Explorers**

Developed in partnership with NASA, we will think and act like NASA innovators during this hands-on program inspired by NASA OPSPARC. After receiving your mission notebook, you will design and build a Mars Rover. Your rover will be tested over various obstacles to ensure it can navigate Mars' brutal terrain. From mission patches to engineering for space NASA Roving Rovers is out of this world!

Afternoon: MAD MACHINES

Discover simple machines! Unravel the power of pulleys, build catapults and claw grabber devices! We'll compile all that we've learned & build our own Mad Science Drag Racers to race and take home!

FRIDAY, FEBRUARY 13, 2026**9AM-3:30PM****Ages 6-12****Location: WRA Clubhouse****\$99 R / \$104 NR****Min. 12 / Max. 20****Morning: LEGO - BRIXology – CREATURES**

Explore the science and engineering that lets humans invent new things based on solutions found in nature! Through the engineering design process become bioengineers solving problems with biomimicry. Put together a wind-up peacock puzzle that can move to take home!

**Afternoon: LEGO - BRIXology - CARNIVALS**

Explore the science and engineering that lets humans design and build exciting rides at carnivals and amusement parks. Through the engineering design process become mechanical engineers solving problems with creative solutions. Construct a miniature swinging viking ship ride to take home.

MONDAY, FEBRUARY 16, 2026**9AM-3:30PM****Ages 6-12****Location: WRA Clubhouse****\$99 R / \$104 NR****Min. 12 / Max. 20**



YOUTH TENNIS



10 & Under Tennis

The scaled-to-size equipment and playing area allows children to rally and play the game, increasing the likelihood that they will return to the court and continue to improve!



SESSION 4: FALL

Mondays: September 8th – October 6th (*Make Up Week 10/13*)

Ages 5-6 4:45-5:30PM

Ages 7-8 5:30-6:15PM

Ages 9-10 6:15-7:15PM

\$75 R / \$80 NR

Instructors: PennSuburban Community Tennis Association

Location: Montgomery County Community College, Tennis Courts

(Min. 3 / Max. 12)



Learn more online at www.WhitpainRec.com.

Individual Instruction

Individual instruction available by appointment:

\$59 R / \$63 NR for one 50-minute lesson.

Located at Montgomery County

Community College Tennis Courts.

Ongoing until SATURDAY, OCTOBER 25

AGES 8-17

Jr. Group Lessons

Designed for those wanting to develop sound stroke mechanics and learn the basic scoring/rules of tennis in a fun, group environment. Each lesson will include fun drills and games applying the strokes learned.

THURSDAYS, SEPTEMBER 11 – OCTOBER 9

5:30-6:20PM

AGES 11-14

\$83 R / \$88 NR

Instructor: Liz Baldasano, PTR

Location: Montgomery County Community College,

Tennis Courts

(Min. 3 / Max. 8)



ADULT TENNIS



Contact the instructor before dropping in to ensure space is available. Register anytime ~ classes are ongoing! Have a question or interested in dropping in on a class? Contact Liz Baldasano, PTR at 267-210-7632 or send an email to liz4tennis@gmail.com.

Location: Montgomery County Community College, Tennis Courts
Instructor: Liz Baldasano, PTR

Tennis for Fitness®

A blend of fitness and tennis! This class focuses on movement, light stretching, and conditioning. Go at your own pace, this is a noncompetitive class.

SATURDAYS: SEPTEMBER 13 – OCTOBER 11

8:30AM – 9:20AM

Ages: 18+

\$83 R / \$88 NR

for 5, 50-minute classes

Drop-In Fee: \$17 R / \$20 NR

Adult Drill & Match (NEW!)

ADM ~ stroke production, serve practice, and match play. Players separated by skill level. For low intermediate players, those who have taken Fundamentals, or those with prior tennis experience.

SATURDAYS: SEPTEMBER 13 – OCTOBER 11

9:30AM – 10:45AM

Ages: 18+

\$100 R / \$105 NR

Package of 4, 1.25 hour sessions

Drop-In Fee: \$27 R / \$30 NR



Individual Instruction

Individual instruction available by appointment: \$59 R / \$63 NR for one 50-minute lesson.

Located at Montgomery County Community College Tennis Courts.

Ongoing until Saturday, October 25. Ages 18+.

Learn more online at www.WhitpainRec.com.



ADULT PROGRAMS

WHITPAIN WALKERS

The Whitpain Walkers is a weekly walking club that meets at various walking trails in the area. This program is ideal for individuals who want to discover great walking trails nearby, want to begin and/or continue a walking routine, or are just looking for something new to do during the day! The walking club is a non-competitive group that encourages healthy lifestyles, exercise, being in nature, and socializing with others.



DATES: SEPTEMBER 10 - OCTOBER 31

(8 Weeks/ twice weekly walks on Wednesdays & Fridays)

TIME: 9 AM

AGES: 18+

ANNUAL FEE: \$15 R / \$20 NR

Locations: Various

Visit www.whitpainrec.com to join registration list



AGES 18+

Zumba® incorporates traditional dances into a fun group exercise! Burn up to 400 calories during class and improve your health, mood, and coordination. Great way to lose weight and stay fit!

TUESDAYS
7:40 PM - 8:40 PM

SEPTEMBER 30 - NOVEMBER 4
6 week session
\$50 R / \$55 NR (6 week session)

NOVEMBER 18 - DECEMBER 9
\$40 R / \$45 NR (4 week session)

Location: The Manor House
at Prophecy Creek Park
Instructor: Jacqueline Brooks
(Min. 6 / Max. 20)





ADULT PROGRAMS continued

WEDNESDAY YOGA with Karen Strawhacker

Ages:
16+

This program is open to all levels, including beginners. The practice of yoga has several benefits to overall health. Through mindfulness training, breath, and posture, students are able to improve their quality of life. Yoga relieves stress and promotes a deeper relaxation while still providing physical exercise. Yoga also promotes balance, flexibility, strength, circulation, and immune response.



WEDNESDAYS from 7:40-8:40PM

SEPTEMBER 3 – OCTOBER 22, 2025 (8 week session \$95 R / \$100 NR)

OCTOBER 29 – DECEMBER 17, 2025 (no class 11/26) (7 week session \$83 R / \$88 NR)

JANUARY 28 – MARCH 18, 2026 (8 week session \$95 R / \$100 NR)

MARCH 25 – MAY 13, 2026 (8 week session \$95 R / \$100 NR)

Location: The Manor House at Prophecy Creek Park

Instructor: Karen Strawhacker

(Min. 6 / Max. 18)

YIN YOGA WORKSHOP with Karen Strawhacker

Ages:
16+

Yin Yoga is a complement to the more recognizable Yan or Yang practice. While the Yan/Yang practice addresses the elastic tissues of the muscles, Yin takes a deeper dive into the inelastic tissues of the fascia, tendons, ligaments and bones. Yin embraces the concept of freeing up the energy channels, also known as meridians. The practice accomplishes this through longer, passive, supported holds which allow the muscle tissue to relax and therefore not engaging the inelastic tissue. Also, the relaxation response allows for the meridians to clear, providing free flow of energy through the channels.

WEDNESDAY, JANUARY 7, 2026

7:40-8:40PM

\$12 R / \$17 NR

Ages:
16+



MONDAY YOGA with Matthew Mitlas

Join yoga instructor Matthew Mitlas for his signature balanced blend of movements that stretch, strengthen, increase breath capacity, and quiet the mind. Matthew will focus on postures that bring relief to common areas of the body such as the hips, low back, neck and shoulders, while also sharing about uplifting yogic philosophy and meditation.

MONDAYS from 7:40-8:40PM

OCTOBER 6 - DECEMBER 15 (No Class Oct. 13 & Nov. 24)

9 WEEK SESSIONS \$107 R / \$112 NR

JANUARY 5 – MARCH 9 (No class Jan. 19 & Feb. 16)

8 WEEK SESSIONS \$95 R / \$100 NR

Location: The Manor House at Prophecy Creek Park

Instructor: Matthew Mitlas

(Min. 6 / Max. 18)



WHITPAIN DOG PARK

We're Moving!!!

In 2026 The Whitpain Dog Park will move to our new location at 1610 Arch Street Road!

WHITPAIN DOG PARK MEMBERSHIP

For the safety, accountability, and enjoyment of users, Whitpain Dog Park is for registered members only. A key fob or access code is required to enter the park.

HOW TO REGISTER

Memberships are good through the end of 2025! Registration for 2026 will open in December. Pay membership dues online! You can also leave a check (made out to Whitpain Township) and paperwork in the night drop box in the Township Building vestibule, or administration building during business hours.

After you pay online at www.whitpainrec.com, please email, park&rec@whitpaintownship.org, or fax, 610-277-2209, over the required paperwork (orientation quiz, vet records, and county license). Once we receive your information, we will activate a key fob for you and the 5-digit access code you provide when you register. We will notify you when your fob is ready to be picked up and your access code is activated.

RENEWING MEMBERS:

Pay online to renew your membership. Please email, park&rec@whitpaintownship.org, or fax, 610-277-2209, your updated vaccination records, and your current county dog. You do NOT need to complete the orientation quiz. Your access code and key fob will be activated only after we receive the updated vet records and county license.

ANNUAL MEMBERSHIP FEES

- 2025 Fees: \$35 R / \$50 NR
- Each additional dog (3+): \$15 R / \$20 NR
- FEES PRORATED STARTING 8/31: \$20 R / \$30 NR (INCLUDES 2 DOGS)
- Memberships expire on 12/31. You can register for the following year starting in December.

REQUIRED DOCUMENTS

- Current Vaccination Records (Rabies, Bordetella, Distemper)
- Valid PA Dog License (lifetime or annual)
- Registration Form and Waiver (if you didn't pre-register and pay online)
- Orientation Quiz (new members only)

SUPPORT THE DOG PARK

Support your local dog park by buying a \$100.00 engraved brick! Engraved messages can be as simple as a family or business name, or in memory of a loved one or dog. Visit www.whitpainrec.com for more info.



Thank You Dog Sponsors!!



CADDICK UTILITIES
AMBLER, PA
215-653-0260



JAMIE ADLER
TEAM
jamieadlersoldit.com

Kaplin | Stewart
Attorneys at Law





Russell R. Valante
Executive Vice President/
Investments

Retirement involves striking a delicate balance between cash flow, spending, investment risks, lifestyle needs, and many other factors. If your retirement is feeling off-balance, it's time to get the advice you need.

Russell Valante of Janney Montgomery Scott has been helping people reach their retirement goals for nearly 20 years. He can provide a thorough analysis of your unique retirement needs, help you set goals, and create a plan to help you stay on balance to meet them. Contact Russell today to discuss how he can help you find the right balance for your retirement.

Janney Montgomery Scott LLC
1767 Sentry Parkway W, Suite 110, Blue Bell, PA 19422-2217
215.619.3920 toll-free: 888.567.0022
rvalante@janney.com www.RussellValante.com



Proudly serving Whitpain Township for 33 Years

Golden Sea

金海 Chinese Restaurant

HOURS:

Tuesday to Thursday:
11:30am to 9:30pm


Friday to Saturday:
11:30am to 10:30pm

Sunday: 12:00pm to 9:30p.m.



Closed Mondays

Now Open For
Take Out Only!

1301 Skippack Pike | Blue Bell, PA 19422 | 610-292-8881 | 610-292-8882
www.goldenseabluebell.com



ANTON B.



Urban

FUNERAL HOME, INC.

Peter "Skip" Urban, Supervisor
Peter A. Urban, Jr., Funeral Director

Honor a Life Well Lived

1111 South Bethlehem Pike Ambler, PA
215-646-8556 UrbanFuneralHome.com

Elliott Greenleaf

Attorneys at Law

925 Harvest Drive, Suite 300, Blue Bell, PA 19422

215-977-1000 / www.elliottgreenleaf.com / follow on Twitter@ElliottAttys
Blue Bell / Wilkes-Barre / Wilmington



The Best Homes Have an Impriano Roof!®

ROOFING | SIDING | WINDOWS | GUTTERS | DOORS | SKYLIGHTS

REPLACEMENT DIVISION

UP TO **\$500 Off**

Any Complete Roofing or
Siding or Window Job

Present Coupon At Time Of Contract Acceptance.

Not Valid With Any Other Offer.

*\$500 Off Coupons Based on 5%

NEW INFRARED TECHNOLOGY

10% Off SERVICE DEPARTMENT

Same Day Roofing & Siding Repairs
Must Call Before 9am Mon-Fri

Present Coupon At Time Of Contract Acceptance.
Not Valid With Any Other Offer.

Local: **(215) 654-1990**

1662 DeKalb Pike, Blue Bell, PA 19422

(610) 353-8439

4031 West Chester Pike • Newtown Square, PA 19073

CELEBRATING

52
Years



Call For 52 years discount! Accountability plus!

www.impriano.com



960 Wentz Road
Blue Bell, PA 19422

Presort Standard
U.S. Postage
PAID
Permit No. 550
Lehigh Valley, PA



This Community Newsletter is produced for
Whitpain Township by Hometown Press
215.257.1500 • All rights reserved®

To Place An Ad Call Mr. Kim Kriebel At Hometown Press • 267-371-2833 • klk14htp@gmail.com

\$5 off
your purchase
of \$30 or more

P.J. WHELIHAN'S
PUB + RESTAURANT
www.PJsPub.com

PRESENT OFFER AT TIME OF PURCHASE
799 Dekalb Pike, Blue Bell

over 20 Craft Beers On Tap!

P.J. WHELIHAN'S
PUB + RESTAURANT

www.PJsPub.com

Patio Seating Available

**WATCH
THE GAME
ON OUR TV'S**

Convenient Curbside Pickup
Call Today 610-272-8919

CELEBRATING OUR 50TH ANNIVERSARY

Realize Greater Heating & Air Conditioning Efficiency...

AND SAVE UP TO 40%



Family Owned & Operated Since 1972
**INSTALLATION & SERVICE
ON ALL MAJOR BRANDS**

**READER'S
CHOICE**
Best HVAC
Contractor
15 Years
in a Row

**\$300
off**

**ANY HEATING &
A.C./HEAT PUMP**

Combined System Installed
Mention This Ad

Heating • A/C • Heat Pumps
Not good with any other offers
One coupon per job
Coupon valid only at time of sale

**Installations • Sales • Service
Maintenance Contracts**



**Financing
Available**

Free Estimates On New Installs

800 Hagey Rd, Souderton • Fast Emergency Service
267-204-3348 • www.cc-hvac.com



Edward Jones

> edwardjones.com | Member SIPC



Finding solutions for your
financial needs.
Let's prepare for your future
together.



Elena M Sickles, CFP®
Financial Advisor
1061 Dekalb Pike Suite 101
Blue Bell, PA 19422
610-279-4286

EJB-19325-A-E-DA-4 AECSPAD 2/20/2016