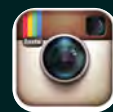




SPRING/SUMMER 2022

Welcome to

WHITPAIN TOWNSHIP



Montgomery County, Pennsylvania



Photo taken along the Crossways Trail



INSIDE THIS ISSUE

| | |
|--|-------|
| Manager's Message | 3 |
| Contact Information..... | 4 |
| 2022 Budget Adopted | 5 |
| Ballot Question on Earned Income Tax ... | 6 |
| Mermaid Park Master Plan Available | 7 |
| Board of Supervisors Reorganizes..... | 8 |
| Shade Tree Commission Initiatives..... | 9 |
| Stormwater Management | 10 |
| PARKS & RECREATION | 12-27 |
| Discount Tickets | 14 |
| Special Events..... | 14-15 |
| Workshops..... | 16-17 |
| Youth Programs | 18-26 |
| Adult Fitness Programs..... | 26-27 |
| Whitpain Dog Park..... | 29 |

Learn about fun activities
and more at
www.WhitpainRec.com.

Visit our website at
www.whitpaintownship.org and
sign up for the Whitpain Wire

Design • Build
Outdoor Living • Rooftop Gardens



davidbrothers.com
Landscape Architects & Builders | 610.584.1550

Patitucci
Wealth Management
OF JANNEY MONTGOMERY SCOTT LLC

Get a complimentary
Financial Analysis from
a multi-generational team
with over 40 years of
Investment Experience

www.MPatitucci.com

MICHAEL PATITUCCI
Executive VP / Financial Advisor

MICHAEL PATITUCCI III
Financial Advisor



Janney Montgomery Scott LLC
1767 Sentry Parkway West, Suite 110, Blue Bell, PA 19422
215.619.4501 | www.mpatitucci.com

© JANNEY MONTGOMERY SCOTT LLC • MEMBER: NYSE, FINRA, SIPC
REF: 526236-0122



Rosemary Camponovo, PROPRIETOR
BROAD AXE CORNER
46 West Skippack Pike | Broad Axe, PA 19002
610.272.1727

*Come Visit our
New Location!*



Fine Jewelry
Custom Design
Expert Jewelry Repair
Appraisal
Upscale Fashion Jewelry
Accessories
Gifts
Buy & Sell Precious Metals



Like Us on Facebook,
Twitter & Pinterest



RUDOLPH CLARKE, LLC
ATTORNEYS AT LAW

Offices in Montgomery, Bucks, Delaware, Chester and Burlington Counties

mail@rudolphclarke.com

215.633.1890

www.rudolphclarke.com



MANAGER'S MESSAGE:

As we look ahead into the coming year, residents can expect to see more progress on PennDOT's Route 202 Widening Project, the continuation of our popular Summer Concert and Movie series, and work to begin on the replacement of the Pulaski Drive bridge.

Residents can see the widening that has already occurred at the southern and northern ends of Route 202 as PennDOT's contractors will now begin focusing on the middle section of the roadway. Unfortunately, the section of Route 202 from the Turnpike overpass to the area near Blue Bell Country Club is the most complex and time-consuming stretch of roadway in this project.

As we reflect on 2021, I am very proud of the heroic work performed by our Police Department, Centre Square Fire Company, and Second Alarmers Rescue Squad during the height of Tropical Storm Ida back in September. These crews rushed to various emergencies throughout the Township, were integral in several water rescues and also assisted Upper Dublin Township when a tornado ripped through their municipality. Our Public Works crews also worked quickly to clean-up storm related damage and to repair roadways damaged by flood waters.

I am also proud to report that the Yost Road Bridge replacement project was named the winner of the Pennsylvania State Association of Township Supervisors' 2020 Road/Bridge Safety Improvement Program. The old Yost Road Bridge was a 60-year-old structure in deteriorating condition and was prone to flooding. The replacement project made the bridge safer for pedestrians and motorists and reduced flooding.

This edition of the newsletter contains articles about Mermaid master planning, information on an earned income tax ballot question, sustainability, and more. If you are not receiving our weekly electronic newsletter the Wire, please sign up at www.whitpaintownship.org.

Sincerely,
Roman Pronczak
Township Manager

**BUYING or SELLING
a HOME?**
**LET'S HAVE
COFFEE!**



Kim Zampirri, GRI, CRS
Associate Broker, Realtor®

RE/MAX
Outstanding Agents
Outstanding Results®

RE/MAX Central
Office **215.643.3200**
Cell **215.280.7752**
731 Skippack Pike
Blue Bell, PA 19422
Kim@KimZRealEstate.com
KimZRealEstate.com

Kim Zampirri
Follow **KimZRealEstate**
f t in

We'll Take Care of It!

- ✓ Heating Oil
- ✓ Air Conditioning
- ✓ Service & Installations
oil, gas, electric, hydronic, forced hot air
- ✓ Propane
- ✓ Heat Pumps
- ✓ Plumbing Repairs
- ✓ Guaranteed 24-hour emergency service for our customers!

Visit us
online for
money-saving
coupons!



WALTON
1921 100 YEARS 2021 INC.

215-391-1830
888-927-6211
WaltonInc.com

WHITPAIN TOWNSHIP CONTACT INFORMATION

960 Wentz Road • Blue Bell, Pennsylvania 19422 • Phone: 610-277-2400 • Fax: 610-277-2209

www.whitpaintownship.org • www.whitpainrec.com

Sign up for the Whitpain Wire

BOARD OF SUPERVISORS

Kimberly J. Koch, *Chair*

Michele Minnick, *Vice Chair*

Jeffrey Campolongo, *Secretary*

Scott Badami, *Assistant Secretary*

Joyce M. Keller, *Treasurer*

Local government of the Commonwealth of Pennsylvania is divided into a number of classifications i.e., cities, townships, and boroughs. There are two categories of townships in the Commonwealth – those identified as townships of the first class and those known as townships of the second class. Second class townships make up the greatest bulk of municipalities in Pennsylvania. Whitpain Township is a Township of the Second Class. It is governed by a five-member Board of Supervisors elected at large by the electorate. Most, if not all, of the executive and legislative powers allocated to Whitpain Township in the State Second Class Township Code are vested in the Board of Supervisors. The Board of Supervisors is empowered to appoint professionals to assist them in the operation of the Township and to furnish advice and counsel on technical matters. Additionally, the Board appoints all of the members of the various advisory boards and commissions as well as the Zoning Hearing Board and the Planning Commission.

The levying of Township taxes and the appropriations to the various departments and subsidiary boards and commissions are the responsibility of the Board of Supervisors. During the months of November and December, public hearings are held for the purpose of reviewing the budget for the following year. Residents are encouraged to attend these meetings and to review the proposed Township budget during that time.

CODE ENFORCEMENT/ZONING

- Fences
- Fire Alarms & Fire Protection Permits
- Flood Plain
- Signs
- Mechanical
- Bldg, Electrical, Plumbing, Mechanical Permits
- Plot Plans
- Property Uses
- Setbacks
- Home Use Occupations
- Variance/Special Exceptions

PARKS AND RECREATION

- Community Festival
- Concerts & Movies at Wentz Run Park
- Contracted Programs
- Dedication Program
- Discount Tickets
- Montco Senior Games
- Park Facility and Field Permits
- Park and Open Space Board
- Programs, Activities, & Events
- Seasonal Employment
- Shade Tree Commission
- Sponsorship Opportunities
- Summer Day Camp
- Trails and Open Space
- Volunteer/Community Service

POLICE

- Animal Control
- Bicycle Registration
- Block Parties
- Fingerprinting
- Gun Permits
- Parking Tickets
- Reporting Crime
- Road Closures
- Solicitation Permit
- Traffic Lights
- Non-Emergency: (610) 279-9033

FINANCE/SEWER

- Accounts Payable
 - Audit Questions
 - Human Resources
 - Invoices
- SEWER**
- Certifications
 - Sewer Bills/Payment

ENGINEERING/PLANNING

- Residential Permit Inquiries (Additions, Pools, Driveways, Patios)
- Commercial/Institutional Permit Inquiries
- Site Plans/Survey Questions
- Stormwater Drainage Concerns
- MS4/TMDL Administration & Management
- GIS Mapping/Township Maps
- Grading and ICP Permits
- Township Roadway Occupancy Permits
- Site, Escrow and Permit Inspections
- Traffic Management/Traffic Signal Operations and Maintenance
- Requests for Information for Land Developments and Subdivisions
- Sanitary Sewer Design & Connection Requests
- Easement/Right-of-Way Informational Requests
- Land Development, Subdivision & Waiver Reviews
- Regulatory Agency Inquiries
- Ordinance Development and Enforcement
- Municipal Improvements Projects (Parks, Roadways, Bridges, Utility Infrastructure)

PUBLIC WORKS

- Christmas Tree Collection
- Fences
- Leaf Collection
- Maintenance-Building, Grounds, Park
- PA 1 Calls
- Potholes
- Streets- Paving, Snow, Road debris
- Street Signs
- Storm & Sanitary Sewer - blockage/odor
- Sweeping

FIRE

- Donation for Ambulance
- Prevention Education
- Safety Inspections
- Teacher Training/Fire
- Emergency Management
 - Chemical Spills
 - Fire
 - Floods
 - Power Outages
- Second Alarmers (SARS) Info Calls
(215) 659-1885

MISCELLANEOUS

Water Companies

Ambler Water: **215-646-1000**

PA American: **1-800-717-7292**

North Wales Water: **215-699-4836**

Montgomery County Courthouse:
610-278-3000

District Court 38-1-21: **215-646-8201**

Voter Registration: **610-278-3280**

Electronic & Hazardous
Waste Collection: **610-278-3618**
Trash/Recycling:
Contact your trash hauler

Tax Collector: **610-492-9191**
Walk-Ins Tuesday & Thursday
Call for appointment
Berkheimer: **610-279-7500**

Power Outages - PECO:
1-800-841-4141
Comcast - bill/account information:
610-279-7200

Whitpain Rec Association:
www.WRASports.org
Ambler/Whitpain Football & Cheering:
www.awtrojans.com
Wissahickon Lacrosse Club:
www.WissLAX.com

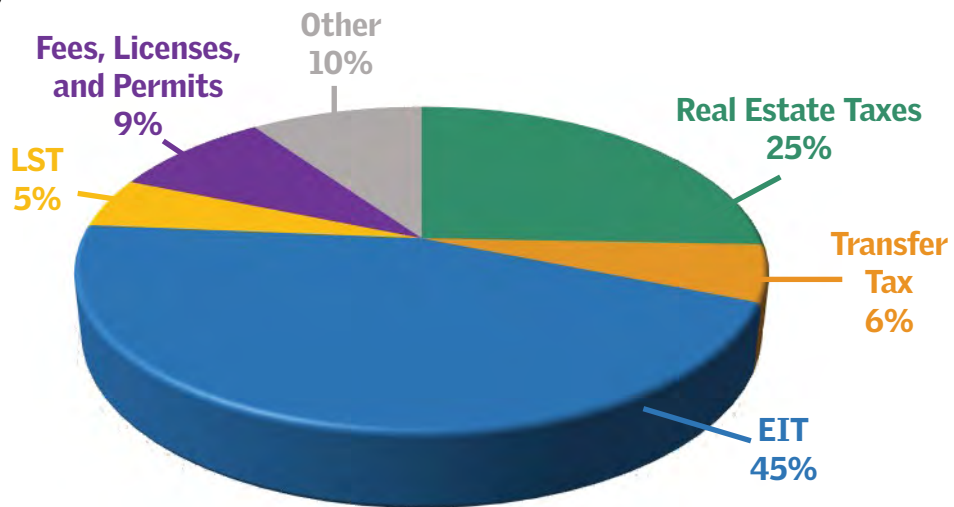
2022 Budget Adopted

The Board of Supervisors adopted the Township's 2022 budget late last year. The budget keeps tax rates steady in the Township. A homeowner with a property assessed at the Township average of \$227,000 would pay \$726 in Township taxes in 2022. The Township's combined real estate millage rate is the fifth lowest in Montgomery County.

The budget includes funding for the replacement of the Pulaski Road Bridge, regional water quality enhancements and money for a variety of preliminary improvements to Mermaid Park to bring new utilities to the property and to further stabilize remaining structures on the site.

As part of the budgeting process, the Board discussed the possibility of placing a ballot question on the May 17, 2022 ballot that would increase the earned income tax by 0.06%. In early 2022, the Supervisors moved forward with concept and voters in Whitpain will consider the ballot question when voting this spring. The proposed increase to the EIT would be used to help pay down debt from open space acquisition and for open space maintenance. Any increase to the EIT would have to be approved by voters in a referendum before it could go into effect.

Where Does General Fund Revenue Come From?



Quality workmanship to meet your automobile collision and repair needs

811 DeKalb Pike
Blue Bell, PA 19422

T: (610) 277-2929 • F: (610) 277-0030

534 N. Trooper Road
Norristown, PA 19403

T: (484) 684-7220 • F: (484) 684-7372

CenterSquareMotors
collision repair specialists
www.centersquaremotors.com
info@centersquaremotors.com
Chuck Dietch, Owner

Center Square Motors is a state-of-the-art automotive services facility, serving the region since our beginning as D&C Auto Body in 1956. We provide:

- On-site car rental
- 24-hour towing service
- OEM Certified Collision Repair for Acura/Honda, Infiniti/Nissan, FCA, Alfa Romeo, Hyundai and others

Abbey Plumbing & Heating

Quality plumbing and heating service since 1976



24 Hour Emergency

Phone: 215-643-6645

Fax: 215-643-2216

www.abbeyplumbing.com



Blue Bell Dental Centre

Office Hours by Appointment

Mark L. Bidwell, DMD

Phone: 610-279-4277

Fax#: 610-279-3624

www.bluebelldentalcentre.org

1213 Skippack Pike

Blue Bell, PA 19422



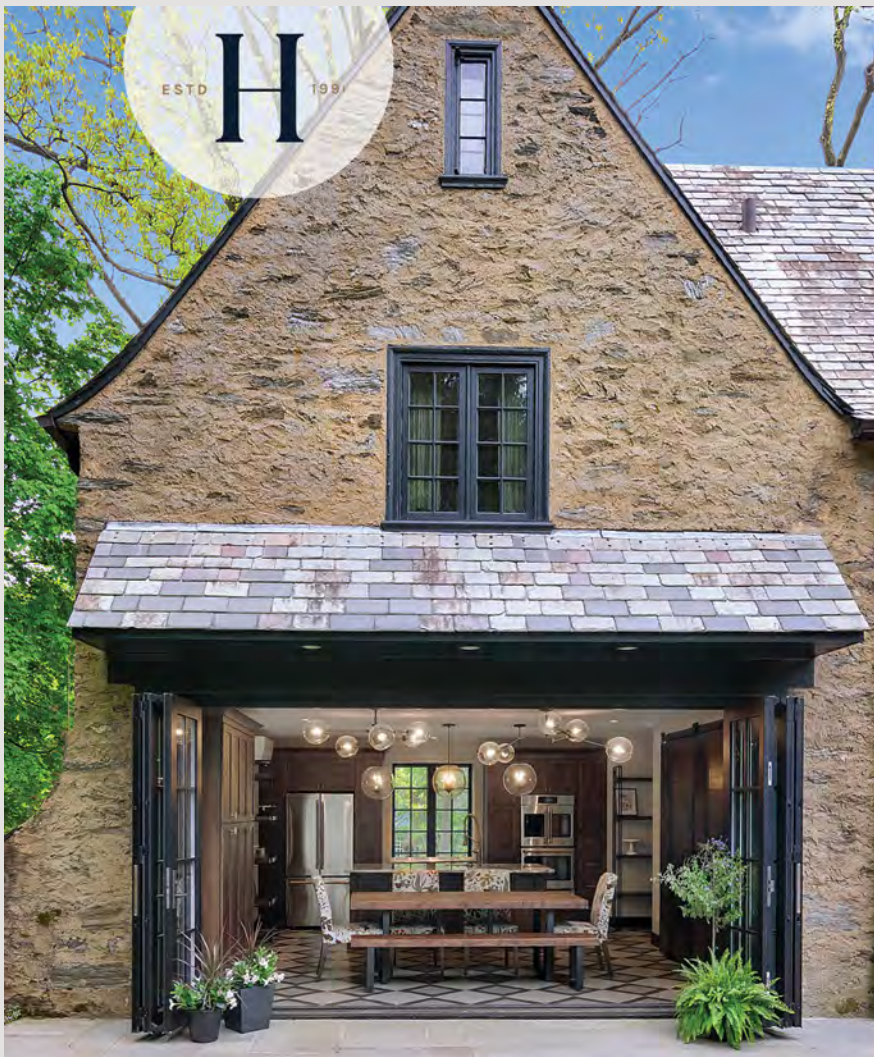
Ballot Question on Earned Income Tax

When Whitpain voters head to the polls for the primary election on May 17, 2022, they will see a ballot question that proposes increasing the Township's earned income tax (EIT) by 0.06%. If approved, the additional EIT revenue would be used to help pay down debt from open space acquisition and for open space maintenance.

This approach would have the least possible impact on families and would not impact citizens on a fixed income. The Township has held the line on taxes since 2010. In the 12 years since then, the Township has made a number of open space acquisitions and improvements, including purchasing Mermaid Park, partnering with the county and Wissahickon Trails to preserve the Cheston property, investing in planned improvements at Wissahickon Park, and upgrading Erbs Mill Park, while also partnering with our youth sports associations to build restroom facilities at Centre Square Park and Stony Creek Sports Park.

"The Township has done a wonderful job of purchasing parkland and open space which provides additional recreational opportunities for residents and environmental benefits for our larger community," said Board Chair Kimberly Koch. "Purchasing, preserving, and developing parks in Whitpain Township is an expensive endeavor, and we believe a modest adjustment to the earned income tax offers a very viable solution to pay down debt incurred from open space purchases."

If voters approve the ballot question, the average taxpayer in Whitpain could expect to see a \$40 yearly increase in their EIT payment beginning in 2023.



Make Your Home Your Favorite Place

Harth Builders can improve the beauty and comfort of every room in your home — both inside and out.

HARTH
DESIGN | BUILD | REMODEL

HarthBuilders.com | 215.654.0364

1021 N. Bethlehem Pike
Spring House, PA
PA #0249



Mermaid Park Master Plan Available

The final Master Plan for Mermaid Park is available for review on the Township's website. The Master Plan presents a possible road map for the future development of the park.

The plan is an outcome of a year-long planning effort including four public meetings, eight committee meetings and over 1,200 responses to a public survey. It calls for the removal of the current pool and dam and naturalization of the waterway running through the Mermaid property. Besides being in the middle of the floodplain, the existing pool is well beyond its useful life. Removal of the pool and dam will make way for an environmentally sensitive restoration of the waterway which will create riparian buffers, enhance wildlife habitat, and reduce downstream flooding by increasing stormwater capacity.

The final Master Plan also shows inclusive nature-based playgrounds, pickleball courts, public restrooms, space for a potential public pool, and the preservation of various structures on the property, including the barn and farmhouse. Township consultants have determined a new pool can fit on the site, but a separate feasibility study should occur to determine the viability and size of any potential public pool. The Master Plan will help guide the Township as decisions about the property are made in the coming years and decades. Not all the improvements listed in the plan will necessarily be built.

Funding will play a major role determining which of the improvements listed in the plan come to fruition. Possible sources of funding include grants, public/private partnerships, donations, adjustments to the earned income tax specifically for open space, and adjustments to real estate taxes.

COMPASS RE

Considering Selling Your Home? Trust it to Your Neighbors.

As residents of Whitpain Township, we provide our clients with one-on-one attention and custom solutions throughout every step of the transaction.

For every question you have and for every aspect of the process—we're there with clear answers and consistent guidance. As a team of seasoned negotiators, marketing experts, and hands-on support, we help you get the best deal for your home with a seamless experience.

Scan the QR code to read our 5 Star Reviews and contact us today!



Angela Morsa & Rick Moore

Homes@MorsaMooreTeam.com
M 215.327.9097 | O 267.380.5813
MorsaMooreTeam.com

COMPASS RE | 8204 Germantown Avenue, Philadelphia, PA 19118

Compass RE is a licensed real estate broker and abides by Equal Housing Opportunity laws. All material presented herein is intended for informational purposes only. Information is compiled from sources deemed reliable but is subject to errors, omissions, changes in price, condition, sale, or withdrawal without notice. No statement is made as to the accuracy of any description. All measurements and square footages are approximations. This is not intended to solicit property already listed. Nothing herein shall be construed as legal, accounting or other professional advice outside the realm of real estate brokerage. Rules & Exclusions apply. Compass offers no guarantee or warranty of results. Subject to additional terms and conditions. © 2020

MORSA MOORE
REALTY TEAM



Board of Supervisors Reorganizes

The Board of Supervisors held their annual reorganization meeting on Monday, January 3, 2022. Judge Suzan Leonard began the meeting by administering the oath of office to Supervisors Joyce Keller and Scott Badami.

At the meeting, Supervisor Kimberly Koch was elected chair and Supervisor Michele Minnick was elected vice-chair. Supervisor Jeff Campolongo will serve as secretary, Supervisor Joyce Keller as treasurer and Supervisor Scott Badami as assistant secretary.

"As a life-long resident of Whitpain Township, it was an honor to be selected by my colleagues to serve as chair of the Board of Supervisors," said Kimberly Koch. "I look forward to serving our residents and continuing the progress we have made on a number of fronts including sustainability, traffic improvements, and recreational improvements at Mermaid and Wissahickon Parks."

The Board will continue holding its public meetings in hybrid format, giving residents and interested parties the opportunity to log-on virtually or attend meetings in person.



Judge Suzan Leonard administers the oath of office to Supervisor Joyce Keller



Judge Suzan Leonard administers the oath of office to Supervisor Scott Badami

STATE REPRESENTATIVE
LIZ HANBIDGE

Working for You!

SENIOR SEPTA PASSES, PENNDOT FORMS, VITAL RECORDS, NOTARY SERVICES, STATE TAX FORMS, AND ALL OTHER STATE SERVICES.

610-277-3230 | REPHANBIDGE@PAHOUSE.NET | 1098 W. SKIPPACK PIKE BLUE BELL, PA 19422 | WWW.PAHOUSE.COM/HANBIDGE

Ambler, PA Family Owned & Operated

McGARRY
CLEANING SERVICES
COMMERCIAL • RESIDENTIAL • JUNK REMOVAL

215-738-1543
www.mcgarrycleaning.com

JUNK REMOVAL

- Residential Cleaning
- Office Cleaning
- Junk Removal
- Post Construction Cleanup
- Apartment Turnovers
- and much more

Insured & Bonded

BERKSHIRE HATHAWAY
HomeServices



Patricia Pezick
REALTOR®
Sales Associate

Fox & Roach, REALTORS®
721 Skippack Pike, Suite 100
Blue Bell, PA 19422
Office 215-542-2200 Cell 610-405-3736
Direct 215-619-0503 Fax 215-542-2222
pat.pezick@foxroach.com

  A member of the franchise system BHII Affiliates, LLC.

Proud to Serve Whitpain Township



McMAHON
Transportation
Solutions
Building Better
Communities

www.mcmahonassociates.com

Engineering | Planning | Design | Technology

Shade Tree Commission Initiatives

The Shade Tree Commission is leading green initiatives throughout the Township. Last year marked the 26th consecutive year the Township has been recognized with the coveted “Tree City USA” designation by the National Arbor Day Foundation. Additionally, Whitpain is the longest-running recipient in the entire state of the National Arbor Day Foundation’s prestigious “Growth Award.”

Residents can see visible progress of our efforts to reforest portions of Township property located next to the Pennsylvania Turnpike. The first of these plantings was completed at the corner of Wentz and Jolly Roads and other sections are targeted for reforestation.

Our outreach also extends to the youth of our community through the annual Earth Day/Arbor Day celebration. This program evolved in 2021 to comply with COVID restrictions and saw Wissahickon School District and local parochial school students submit online videos instead of traditional pictures and poems.

Please see more of our programs and offerings below and find out more at www.whitpaintownship.org

Arbor Day Native Tree Giveaway

The Annual Township Arbor Day Beautification Program is set for Sunday, April 24 at 8 a.m. at Prophecy Creek Park. Once again, the giveaway features a wide range of native species. Along with **free trees**, **free mulch** and **deer protection** will be distributed to Township residents on a first-come, first-served basis.

This is a one-day event and will take place rain or shine. There is a limit of one group of three trees per address or household. *No pre-registration is required but homeowners must present identification indicating Whitpain resident status.*



FREE

Street Tree Program

The Free Street Tree Program promotes the establishment of new street trees which will benefit our community for generations and increase property values. Through this program a limited number of residents can receive a free, professionally planted street tree on their property.



837 Sumneytown Pike | Lansdale, PA 19446

SUNDAY MORNING WORSHIP 10:00AM

For information about our worship, ministries and activities visit GwyneddSquare.org or follow us on social media.





Stormwater Management

Homeowners can take steps to help reduce the effects of stormwater runoff in their communities. By doing their part, homeowners can help reduce the speed and amount of runoff, which helps keep local creeks and waterways healthy for years to come. Help preserve the health and beauty of the streams and creeks of Whitpain Township by using some of the stormwater management tips listed below!



A mature tree's network of leaves slows rainfall during a storm, reducing the speed that raindrops hit the ground and slowing the erosion of soil into the stream. Plants and trees absorb rain, and leaves drop rainfall onto the ground for hours after a storm, giving more water a chance to seep slowly underground. A tree's roots hold the soil, preventing soil from washing into waterways.



Rainfall flows down rooftops into gutters and downspouts, then gushes down driveways to flow into the street and storm drains. To slow water down (and save money on water bills), consider a rain barrel. Place the barrel under a downspout, then capture the water for the lawn or garden. Learn more about different types of rain barrels by visiting the Whitpain Township stormwater management link below!



The large amount of impervious cover can be a significant contribution to excessive stormwater runoff. Consider reducing the amount of impervious surface on a property with driveways or parking areas built from porous asphalt or special concrete blocks containing holes to allow rainfall to trickle through. Or try a patio made from loose slate with gravel between rocks.



A close-cropped, well-manicured lawn may look attractive, but it allows stormwater to flow across it too quickly. Maintaining grass at a height of at least four inches slows the growth of weeds while better absorbing stormwater.



A rain garden is a planted shallow depression designated to catch and filter rainfall runoff. The garden captures rain from a downspout or a driveway. The water sinks into the ground, aided by deep rooted plants that like wet and dry conditions. Rain gardens have been proven to help slow down stormwater runoff and filter pollution, protect rivers and streams, and create a healthy habitat for birds and butterflies.

For additional information on stormwater management and effective management practices, visit the

Whitpain Township Stormwater Management web page:

<https://www.whitpaintownship.org/377/Stormwater-Links-and-Brochures>





fresh reasons to smile.

**Garden-fresh
Produce Delivered
DAILY**

Fresh Produce
Bakery
Sushi
Seafood
Gourmet Cheese
Butcher Shop
Deli

Prepared Foods
Soup Bar
Floral
Hot Bar
Salad Bar
Java Jim's Coffee
Beer & Wine

1000'S of Organics throughout the store

Center Square Plaza: 1301 Skippack Pike Blue Bell, PA 19422 • (215) 437-3200

If you'd like, shop from the comfort of your home: **mccaffreys.com** – choose
curbside pickup or delivery to home!

Parks & Recreation Department



Programs & Events

Director - Kurt Baker...Ext. 381
Assistant Director - Michael Richino, CPRP...Ext. 375
Program Coordinator - Courtney Meehan, CPRP...Ext. 374
park&rec@whitpaintownship.org



Whitpain Township



@WhitpainTwp



@WhitpainParksandRec

MISSION STATEMENT: The Parks & Recreation Department strives to provide a variety of programs and services to enhance the quality of life and create a sense of community. As we progress through the years, we will make every attempt to introduce programs which meet the educational, social, and recreational needs of our residents and guests.

ACCESSIBILITY AND ACCOMMODATIONS:

Whitpain Township Parks and Recreation is committed to actively working to make Township events, trails, parks, playgrounds, sports fields, and open space easily accessible to those with disabilities. The Parks and Recreation Department encourages and supports the participation of all guests, including guests with disabilities. We provide assistance to all guests as needed. Please contact us at 610-277-2400 to request accommodations.

At a Glance - Program Start Dates - view page number for more information

MARCH

9..... Yoga [pg. 26]

APRIL

8..... Soccer Starters [pg. 19]
9..... 10 & Under Tennis Play Day [pg. 23]
9..... Washington DC Bus Trip [pg. 12]
9..... Zumba [pg. 26]
11-15..... Spring Break Fun Days [pg. 20]
11..... i9 Basketball [pg. 25]
13..... Jump Start Hummingbirds Soccer [pg. 19]
12..... Zumba [pg. 26]
13..... Whitpain Walkers [pg. 26]
16..... Floral Design Basics [pg. 14]
16..... Yoga [pg. 26]
18..... 10 & Under Tennis Spring Set 1 [pg. 23]
20..... Healthy Tree Care Seminar [pg. 14]
21..... Lil Sports Multi Sports [pg. 20]
22..... Jr. Team Tennis Spring Training 1 [pg. 23]
24..... Shade Tree Commission Tree Giveaway [pg. 9]
27..... Yoga [pg. 26]
28..... Virtual Reality Fair [pg. 20]
30..... Earth Day 5k [pg. 12]

MAY

7..... Mother's Day Fairy Garden Workshop [pg. 15]
9-13..... Montgomery County Senior Games [pg. 27]
10..... Tennis: Jr. Group Lessons [pg. 24]
13..... Tennis: Jr. Drill and Match Play [pg. 24]
14..... Art Start [pg. 19]
17..... No School Fun Day [pg. 20]
18..... Pollinator-Friendly Garden Webinar [pg. 14]
20..... Adult Tennis Spring Session [pg. 27]
20..... Drive-in Movie at Mermaid Lake Park [pg. 13]
22..... Outdoor Vendor Market and Yard Sale [pg. 12]

JUNE

6..... 10 & Under Tennis Spring Set 2 [pg. 23]
6..... Medicare Seminar [pg. 15]
7..... Zumba [pg. 26]
11..... Zumba [pg. 26]
20..... Park-n-Tots Camp [pg. 18]
20..... Stony Creek Day Camp and Tracers [pg. 18]
20..... Golf Outing [pg. 13]
21..... Stories in the Park [pg. 13]
23..... Concert: Bigg Romeo [pg. 13]

23..... Tennis: Jr. Group Lessons [pg. 24]
24..... Jr. Tennis Drill and Match Play [pg. 24]
28..... Movie: Addams Family 2 [pg. 13]

JULY - Parks and Recreation Month!

11..... Engineering For Kids Camp [pg. 21]
11..... USSI Multi Sports Camp [pg. 24]
14..... Concert: Amish Outlaws [pg. 13]
16..... Art Start [pg. 19]
18..... i9 Sand Volleyball Camp [pg. 25]
18..... Theatre Horizon Drama Camp [pg. 21]
18..... USSI Foundation Soccer Camp [pg. 25]
19..... Movie: Sing 2 [pg. 13]
25..... 10 & Under Tennis Summer Set [pg. 23]
25..... i9 Lacrosse Camp [pg. 25]
25..... Theatre Horizon Drama Camp [pg. 21]
25..... USSI Multi Sports Camp [pg. 24]

AUGUST

1..... Creative Constructors' Camp [pg. 22]
1..... GeoVentures Breath of Wilderness Camp [pg. 22]
1..... GeoVentures Adventure Squad Jr. Camp [pg. 22]
1..... i9 Basketball Camp [pg. 25]
4..... Concert: Shot of Southern [pg. 13]
8..... Mad Science Camp [pg. 21]
8..... Princess Camp [pg. 22]
8..... USSI Multi Sports Camp [pg. 24]
9..... Movie: Encanto [pg. 13]
9..... Zumba [pg. 26]
13..... Zumba [pg. 26]
15..... Superheroes Camp [pg. 22]
15..... Theatre Horizon Drama Camp [pg. 21]
15..... Total Soccer [pg. 25]
22..... Bricks 4 Kidz Camp [pg. 23]

SEPTEMBER

12..... 10 & Under Tennis Fall Set [pg. 23]
16..... Drive-in Movie at MCCC [pg. 13]
16..... Jr. Team Tennis Fall Training [pg. 23]
16..... Soccer Starters [pg. 19]
23..... Big Rig Round-Up - Save the date!
24..... Whitpain Community Festival - Save the date!

OCTOBER

11..... Medicare Seminar [pg. 15]
21 & 22..... Hayrides at Prophecy Creek Park - Save the date!

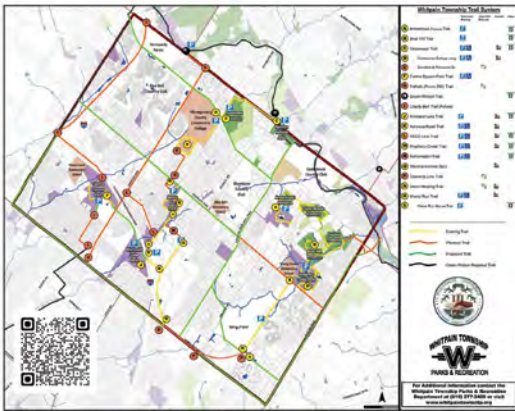
Park and Recreation Activities (continued)



REGISTRATION PROCEDURES

- Register for programs online at **www.whitpainrec.com** or in person at the Whitpain Township Building, 960 Wentz Road, in Blue Bell, between 9am and 4pm.
- Registrations cannot be taken over the phone.
- Registrations are processed in the order in which they are received.
- All fees are payable upon enrollment.
- No refunds or adjustments for: missed classes; discontinuing an activity; cancellation; and/or falsification of information. Fees will only be refunded if a program is cancelled due to insufficient enrollment.
- Some programs/classes are held within a Wissahickon School District building. If the school is closed due to inclement weather or to observe a holiday, no classes will be held. School closing numbers are: #314 (Wissahickon School District) & #320 (MCCC).
- Programs rely on minimum enrollment to run. Please register at least one week before the start date.
- Programs may be cancelled if required minimum enrollment is not met one week prior to the start of a program.

Program and event dates, locations, and prices may change after the printing of this newsletter. While we do our best to ensure the program details in this newsletter are accurate, please refer to www.whitpainrec.com for the most up-to-date information.



TOWNSHIP TRAIL MAP

Whitpain Township Parks and Recreation is excited to announce the completion of the township-wide trail map. The map includes existing, planned, and proposed trails. The map can be viewed by scanning the QR code at right with your phone camera. The map is also posted in trail head kiosks. A printed, foldable map will be available once the planned trails are complete.



STEINBACH VETERINARY HOSPITAL

Jonathan F. King, V.M.D., P.C.
Hours by Appointment: **215-646-0462**

120 W. Skippack Pike
Ambler, PA 19002
Fax 215-646-4388
www.steinbachvet.com



F. LOUISE SCARLETT

"FINE HOME SPECIALIST & LEGEND AWARD"
Bus: 215-542-2200 x1536 | Cell: 215-266-9130
Fax: 866-526-1561 | flouisesca@aol.com



Blue Bell & Eastern Montgomery County Specialist



Chambers Associates, Inc.

Civil Engineers & Surveyors
2962 Skippack Pike
P.O. Box 678
Worcester PA 19490-0678
484-991-8187
staff@chambersassoc.com



Bob McGrath's Tree Service, LLC

*Your tree will fall for us
(you will too, when you see our prices)*
Fully Insured • Free Estimates

215-784-9124 • 610-292-9806
721 Cathcart Road • Blue Bell, PA 19422



Discount Tickets

MOVIE TICKETS

AMC Theatres \$10
 Movie Tavern \$9.50
 Regal/United Artist \$10



Discount tickets may be purchased at the Township Building Monday-Friday, 8:45am – 4:15pm. Cash preferred, credit card accepted (Visa, MasterCard, Discover). \$20 minimum for all credit transactions.

Please visit www.whitpainrec.com for updated discount ticket information.

Special Events

Please visit www.whitpainrec.com & follow us on Facebook for the most up-to-date special event info!

WASHINGTON DC BUS TRIP

Enjoy the Smithsonian Museums, National Monuments, and the famous Cherry Blossom Festival! This is a day on your own trip, please plan your day ahead of time.

SATURDAY, APRIL 9

\$62 R / \$67 NR

Check-in: 6:30 am at Upper Dublin Library, 520 Virginia Dr., Fort Washington
 Bus leaves Upper Dublin Library at 6:45 am, Trip departs DC at 5:30 pm
 (Min. 35 / Max. 52)



EARTH DAY 5K AND FUN WALK

Benefits Open Space Preservation Initiatives

Join the Whitpain Township Parks and Recreation Department, the Whitpain Police Association, and Blue Bell Physical Therapy for a 5k race and fun walk at Prophecy Creek Park. Race proceeds benefit Whitpain's open space preservation initiatives and the Police Association charities. Dogs are permitted for fun walk. All participants receive a race shirt. Register by April 10 to be guaranteed a shirt in your size and to save on registration fees.

SATURDAY, APRIL 30

9:00 AM

5k Race: \$30 if you register by April 10.

Price increases to **\$45** on April 11

Fun walk: \$15 • Vendors: \$50

Sponsored By



WHITPAIN TOWNSHIP & PLYMOUTH TOWNSHIP'S OUTDOOR MARKET

Crafters & Vendors

Need a gift for someone? Looking for some cool handmade crafts? Check out the unique and handmade items at our outdoor market.

Community Yard Sale

One person's trash is another one's treasure. Come find some treasure at our Community Yard Sale. Good bargains to be found for everyone!



SUNDAY, MAY 22

8 AM – 1 PM

PRICE: \$20/SPOT

Location: Montgomery County Community College

Park and Recreation Activities (continued)

**WHITPAIN GOLF CLASSIC**

BENEFITING WHITPAIN POLICE ASSOCIATION and
THE STONY CREEK DAY CAMP SCHOLARSHIP FUND

MONDAY, JUNE 20, 2022
CEDARBROOK COUNTY CLUB
\$165 PER PERSON



Price includes round of golf with cart, lunch, beverages on course, open bar reception, full buffet banquet, prizes, giveaways, and much more!
Visit www.whitpainrec.com for more information and to register.

STORIES IN THE PARK

Join the children's librarian from Wissahickon Valley Public Library for Stories at Wentz Run Park! Bring a blanket to sit on and come ready for amazing stories, sing-alongs, and FUN! For more information, call (215) 643-1320.

WHERE: WENTZ RUN PARK GAZEBO AREA
WHEN: TUESDAYS, JUNE 21 – AUGUST 2 (no stories on 7/5)
TIME: 10 AM – 10:30 AM



Thank you to the Wissahickon Valley Public Library for reading stories in the park!

**DRIVE-IN MOVIE at Mermaid Lake Park**

Ghostbusters (1984)
Friday, May 20

Lot opens at 6:30 pm, movie starts at dusk
Pre-registration cost: \$10 per car for residents & \$15 for non-residents
Day-of cost: \$20 R / \$25 NR per car (while space permits)

SUMMER CONCERTS & MOVIES

FREE fun for the whole family!! Unless otherwise noted, concerts & movies are held at Wentz Run Park. *Concerts start at 7:00 pm and movies start at dusk.*

CONCERTS

June 23 Bigg Romeo
July 14..... Amish Outlaws at
Mermaid Park
August 4.... Shot of Southern

**MOVIES**

June 28 Addams Family 2
July 19..... Sing 2
August 9 Encanto
September 16... Drive-in Movie at MCCC
Movie TBA, check
www.WhitpainRec.com for updates

**SPONSOR OPPORTUNITIES**

The Parks and Recreation Department continues to offer programs and special events for the community. We are looking for sponsors to help offset our expenses. Please contact us at park&rec@whitpaintownship.org if you are interested in partnering with us.

*Workshops***GARDENING WEBINARS**

Instructor: Thom Mrazik, Goodly Gardens

FREE – please pre-register on www.whitpainrec.com for webinar**Top Tips for Healthy Trees:
Plant, Mulch and Prune**

Beautiful trees make an enjoyable garden. Learn tips about proper planting and mulching of young trees, as well as basic pruning to maintain healthy beauty.

**WEDNESDAY, APRIL 20 from 6:30 PM – 7:30 PM****Make Your Pollinator-Friendly
Garden Even Better**

Pollinators thrive in gardens with a variety of nutritious plants, water, shelter, and a safe habitat. Learn about top pollinator-attracting plants and key steps to make your home garden even more inviting to pollinators.

WEDNESDAY, MAY 18 from 6:30 PM – 7:30 PM**FLORAL DESIGN BASICS FOR SPRING HOLIDAY**

Learn floral design techniques while creating a beautiful spring arrangement to take home. The instructor will provide all materials including flowers, greens, and vases/containers. Bring your own floral shears (or a good pair of kitchen scissors) and a box to take your creation home.

SATURDAY, APRIL 16 from 10 AM – 11:15 AM**\$45 R / \$50 NR****Location: Wentz Run Park****Concession Pavilion****Instructor: Marsha Gayl,****Registered Horticultural Therapist (HTR)****(Min. 4 / Max. 15)**

PA018147

JMTawnings

215-659-5239
www.jmtawnings.com

*The Quality, Reliability
& Experience You Expect*

perfecta
Retractable Fabric Awnings
Manufactured Locally

RECOMMENDED BY
SKIN CANCER FOUNDATION

JUNK SQUAD

215-402-7098 WWW.MYJUNKSQUAD.COM

"FULL SERVICE JUNK REMOVAL"

Fully Insured

DISCOVER VISA

BBB

FAMILY OWNED & OPERATED

MONTGOMERY
COUNTY COMMUNITY COLLEGE

mc3.edu

Park and Recreation Activities (continued)



FAIRY GARDEN FLORAL WORKSHOP

This is a great program for parent (or grandparent) and child to enjoy nature together to create a fairy garden with nature materials, plantings, and accessories!



AGES 5-12

SATURDAY, MAY 7 from 10 AM – 11:15 AM

\$40 R / \$45 NR PER CHILD

Location: Wentz Run Park Concession Pavilion

Instructor: Marsha Gayl, Registered Horticultural Therapist (HTR)
(Min. 4 / Max. 15)

KNOW YOUR MEDICARE OPTIONS

MONDAY, JUNE 6

TUESDAY, OCTOBER 11 from 6:30 PM – 8 PM
FREE (pre-register online)

Location: TBD - Whitpain Township Building
Meeting Room A OR Zoom

Presenter: Steve Perlman, DelVal Senior Advisors,
Independent Medicare Planning Specialist

Have your questions answered so you can make the right choice when planning for Medicare or Medicare Advantage decisions. During this free seminar, you will learn:

- How Medicare works and what it covers
- How Part D prescription cards work and how to pick the right one for you.
- The difference between Medicare supplements and Medicare Advantage plans.

This seminar is suitable whether you have decisions to make during the upcoming open enrollment period, or just want to learn more in preparation of that time.



flirt women's boutique

994 DeKalb Pike
Blue Bell, PA 19422

flirt

women's boutique

484-231-8132

flirtwomensboutique@gmail.com

flirtboutiquebluebell.com

FOR EARLY CHILDHOOD EDUCATION

The Malvern School

ENROLLING FOR 2023!

The Malvern School of Blue Bell, 475 Norristown Road, Blue Bell, PA

MALVERNSCHOOL.COM **484-530-0800**



Mike Doolin
REALTOR®

kw

KELLER WILLIAMS
REAL ESTATE

Cell: (215) 407-9611

Office: (215) 646-2900

Email: mikedoolin@kw.com

Website: www.mikedoolin.com

910 Harvest Drive, Suite 100, Blue Bell, PA 19422

EACH OFFICE IS INDEPENDENTLY OWNED AND OPERATED

I'm Here To Help!



CARDIOLOGY CONSULTANTS
OF PHILADELPHIA

Outstanding cardiac care in
the heart of Montgomery County

www.ccpdocs.com

LOCATIONS

CCP Blue Bell
Phone (610) 279-7696

CCP Collegeville
Phone (610) 831-0300

CCP East Norriton
Phone (610) 279-1370

CCP Norristown
Phone (610) 272-3253



PARK-N-TOTS, STONY CREEK DAY CAMP & TRACERS

PARK-N-TOTS

Sessions are packed with theme days, a variety of fun games, sports, and arts & crafts! Campers enjoy exploring the nature trail, playing in the sprinkler, and time on the playground. Park-n-Tots is an excellent introduction to summer camp!

***Registration opens for residents on Monday, April 4 at 9am, and non-residents on Monday, April 18 at 9am – space is limited, and registrations are taken on a first come, first served basis. ***



FOR CAMPER AGES 3-5

JUNE 20 – JULY 29

9 AM – 12 PM or 1 PM – 4 PM

Campers are not permitted to attend both AM & PM sessions the same week

All 6 Weeks: \$600 R / \$690 NR

Per week: \$115 R / \$130 NR

Location: Wentz Run Park Concession Pavilion

Campers must be potty trained.

JUNE 20 – AUGUST 5

from 9 AM – 3 PM

**Location: Shady Grove Elementary
(pending WSD Approval)**

DAY CAMP

For campers entering 1st–5th grade in 2022-2023 School Year

All 7 weeks: \$850 R / \$975 NR

Per week: \$155 R / \$180 NR

TRACERS

For campers entering 6th–9th grade in 2022-2023 School Year

All 7 weeks: \$1,425 R / \$1,600 NR

Per week: \$255 R / \$290 NR

STONY CREEK DAY CAMP & TRACERS

For campers entering grades 1-9 in the 2022-2023 school year.

The Whitpain Township Stony Creek Day Camp believes that camp should be more than just daycare. We subscribe to an “outdoor and active” philosophy that strives to provide an enjoyable experience for every camper. Activities include sports, arts and crafts, trips, theme days and special events such as the camp carnival. With extended hours available through our Kid’s Club program as well as the always popular meal plan option, we provide 7 weeks of worry-free care for parents and an unforgettable summer for campers.

Trips this year include a Phillies game, amusement parks, water parks, trampoline parks and much more! Each week features a “beat the heat” event – either a trip or special event geared towards water play and fun. As an additional treat, campers will have the opportunity to purchase Kona Ice one day a week after lunch!



Early Bird Special!* Register for **all 7 weeks** by **April 30** and save **\$25 per camper!** Register more than one child by **April 30** and receive a **\$15 household account credit** per additional camper!
**Must register for all seven weeks to take advantage of Early Bird Special*

KIDS CLUB*

TIME: 7:00 AM – 8:45 AM / 3:15 PM – 6:00 PM

KIDS CLUB AM: 7:00 – 8:45 AM

All 7 weeks: \$350 R / \$380 NR

Per week: \$80 R / \$90 NR

KIDS CLUB PM: 3:15 – 6 PM

All 7 weeks: \$475 R / \$495 NR

Per week: \$100 R / \$110 NR

KIDS CLUB COMBO: 7:00 – 8:45 AM & 3:15 – 6:00 PM

All 7 weeks: \$750 R / \$790 NR

Per week: \$155 R / \$160 NR

***Must be registered
for Stony Creek Day
Camp or Tracers**



Learn more and register for Day Camp, Tracers, and Park-n-Tots online at www.whitpainrec.com



PRE-SCHOOL AGE PROGRAMS

AGES 2 AND 3-4

SPRING: Fridays, April 8 – May 13

FALL: Fridays, Sept 16 – Oct 21

10 am – 11 am

\$104 R / \$109 NR

AGES 3-4

SUMMER: August 15-19

9 am - 10:30 am

\$114 R / \$119 NR

SOCCER STARTERS

The Soccer Starters program is aimed at providing best-in-class soccer training for your kids. A perfect introduction to soccer basics, children learn the fundamental skills needed to progress as players, while gaining valuable experience in teamwork, sportsmanship, and physical fitness. Each player receives a t-shirt and certificate of completion. For children ages 2 (Jr. Soccer Starters) and 3-4 (Soccer Starters).



**Location: Wentz Run Park
Multipurpose Field**
Instructors: Total Soccer
(Min. 6 / Max. 20)

ART START

Children and caregivers will have fun trying new crafts and sensory art activities! Our art teacher will lead participants through a unique craft each week followed by sensory play and exploration. These activities support language development, cognitive growth, fine and gross motor skills, problem solving skills, and social interaction. The older kids will enjoy learning how to use many different mediums throughout the program.

SATURDAYS, MAY 14 – JUNE 25 (no class 5/28)

SATURDAYS, JULY 16 – AUGUST 20

Ages 1-4 10 am – 11 am

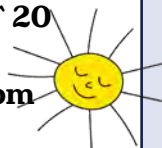
Ages 5-10 11:15 am – 12:15 pm

\$75 R / \$80 NR

LOCATION: Wentz Run Park Concession Pavilion

INSTRUCTOR:

Leslie Hargrove, PA Certified K-12 Art Teacher
(Min. 5 / Max. 10)



WEDNESDAYS, APRIL 13 – MAY 18

Ages 3-4 5:30 pm – 6:15 pm

Ages 5-6 6:15 pm – 7:15 pm

\$80 R / \$85 NR

**Location: Stony Creek Sports Park
500 North Wales Road**
Instructor: Jump Start Sports
(Min. 8 / Max. 20)

HUMMINGBIRDS SOCCER



Children ages 3-6 have fun and learn the basics of soccer in an age-appropriate program! Players learn dribbling, passing, trapping, shooting, defending, and positioning. Each session consists of instruction in all aspects of the game, participation in fun drills designed to teach skills, and fun, low-key, non-competitive games! Children should have shin guards, all other equipment provided. Campers receive a t-shirt and award!

AGES 3-5

AUGUST 1-5

9 AM – 10 AM

\$75 R / \$80 NR

I9 SPORTS BASKETBALL



Location:
Wentz Run Park Basketball Courts
Instructor: i9 Sports
(Min. 9 / Max. 16)

This camp will focus on learning new skills, games, strategies, and good sportsmanship. Campers will participate in a variety of fun games and activities which will help them develop the fundamentals of the game of basketball! All campers will receive an i9 Sports participation shirt during the first session, snacks, and trophies will be given out on the last day of camp during our end of week celebration!

Park and Recreation Activities (continued)



AGES 3-5

THURSDAYS, APRIL 21 – MAY 19

10:15 AM – 11 AM

\$75 R / \$80 NR

Location: Wentz Run Park

Instructor: Lil Sports

(Min. 5 / Max. 20)

LIL SPORTS MULTI SPORTS



The goal of Lil' Sports is to teach children about sports and physical fitness in a fun, safe and positive atmosphere that will allow them to build their skills and their love for sports and physical activity. Leading by example, instructors work on a wide range of developmental skills and milestones such as gross motor skills, hand-eye coordination, being a team player, and following directions.

YOUTH PROGRAMS



GRADES 10-12

THURSDAY, APRIL 28

4 PM – 5 PM

Virtual Reality Fair



Hosted by Genisys Credit Union and in partnership with the MCUL, the virtual reality fair simulates one year of independent living and teaches students how to manage their finances with a set budget through a mobile app. They choose a career, are assigned a credit score, and have to navigate through buying housing, clothing, food, etc. It's very interactive and is a real eye opener. The virtual fair is geared towards high school 10-12th graders. A mobile phone or tablet that can download an app is required.

SPRING BREAK FUN DAYS

Morning Theme: *Super Slimy Smokey Science*

Dive into a variety of scientific fields as you mix and stretch silly putty and slime, copperplate nickels, and investigate the mysteries of optical illusions. Become captivated by lasers, dry ice, watch hair-raising Van de Graaff experiments, help solve a mystery, and so much more! Tinker with circuits, catapults, and experience what happens when you mix science and fun!

Afternoon Theme: *Mad Machines & Rockin' Rockets*

Spring into a medley of scientific subjects and learn about the Earth and its animal inhabitants, simple machines, rocketry, flight, and chemical reactions; there's something for everyone! Build and race a car, construct a rocket, create animal tracks, build a bug house, and grow your very own crystal gardens to take home!

Location: Monday-Thursday Blue Bell Elementary / Friday: Wentz Run Park Concession Pavilion
All participants must bring a lunch, water bottle, and snack. (Min. 10 / Max. 20)

AGES 6-12

APRIL 11-15

9 AM – 3 PM

\$280 R / \$285 NR

Instructor:
Mad Science

AGES 6-11

TUESDAY, MAY 17

9 AM – 3 PM

\$75 R / \$80 NR

NO SCHOOL FUN DAY WITH I9 SPORTS

Participants will be engaged in a variety of age and skill appropriate games/sports that will keep everyone energized and having fun! It will be a day filled with fitness, fun, friendship, and good sportsmanship. Our i9Sports Coaches will provide all equipment needed for the day and keep everyone fully engaged during our time together. *Campers must bring their own lunch, snack, and water bottle.*

Location: Multipurpose Field at Wentz Run Park

Staff: i9 Coaches

(Min. 10 / Max. 20)

Park and Recreation Activities (continued)

**ENGINEERING FOR KIDS****Morning Topic: Medieval Mayhem**

In medieval times, there were a huge number of engineering innovations. Crossbows, drawbridges, towers, cranes, the compass, and more were invented during those times. In Engineering of Medieval Times, students will explore mechanical and civil engineering. They will build infrastructure for their lands including bridges and towers, construct catapults to lay siege to others, and take part in jousting games.

Afternoon Topic: Sail the Seas

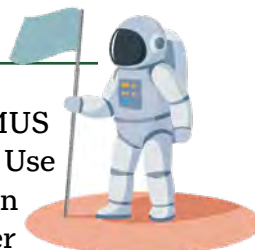
Avast, me maties! Jump on board and join the crew to work together to explore the everyday engineering challenges that pirates were once faced with. During this week, students will explore the ideas of buoyancy and surface area as they design their pirate ships, the sails for their ships, and a system to retrieve sunken treasures! In this camp, students explore industrial and marine engineering as they design their own boat and sails and devise ways to dive deep into the ocean to retrieve the buried treasure.

AGES 8-14**JULY 11-15****9 AM – 3:30 PM****\$275 R / \$280 NR****Location: Blue Bell Elementary School****Instructor:****Engineering for Kids****(Min. 5 / Max 10)****Engineering
For Kids****THEATRE HORIZON DRAMA CAMP**

In Theatre Horizon's Summer Drama Camp, young actors spend a week working as an ensemble to create an original play - full of drama, comedy, suspense, and one-of-a-kind characters! Campers are guided through playwriting basics, character development, and the fundamentals of stagecraft. On the last day, campers perform their world premiere play!

**WEEK 1: JULY 18 – 22****9 AM – 3 PM****\$175 R / \$180 NR****Location:****Blue Bell Elementary****WEEK 2: JULY 25 – 29****9 AM – 3 PM****\$175 R / \$180 NR****Location:****Blue Bell Elementary****WEEK 3: AUGUST 15 – 19****9 AM – 12 PM****\$120 R / \$125 NR****Location: WRA Clubhouse
at Centre Square Park****AGES 7 – 12****Instructor: Theatre Horizon****(Min. 11 / Max. 18)****MAD SCIENCE****Morning Topic: NASA – STEM Explorers**

Think and act like NASA innovators during this hands-on program inspired by the NASA OPTIMUS PRIME Research Challenge (NASA OPSPARC). Use creative and collaborative skills to design a mission patch, train like an astronaut, build a Mars rover and solve real-world engineering problems.

**Afternoon Topic: Mad Machines & Jr Engineers**

Whether you enjoy building or destroying structures, you'll love this camp! Work with pulleys, wedges, screws, and levers, build your own catapults and play robot soccer! Exercise your ability to work with others while constructing a geodesic dome big enough for all campers to fit inside! Let the engineering excitement begin!

AGES 6-12**AUGUST 8-12****9 AM – 4PM****\$270 R / \$275 NR****Location: Centre Square Park –
WRA Clubhouse Pavilion****Instructor: Mad Science****(Min. 12 / Max. 20)**

Park and Recreation Activities (continued)



GeoVentures Adventure Squad Jr. Camp

Get ready to uncover the mysteries of nature one adventure at a time! Our quests, challenges, and games make us ready for anything in the woods. Together we'll encounter creatures, identify prints and tracks, explore ecosystems, play stealthy games and hunt for treasure. Join us for a great adventure every day!

AGES 6-8

AUGUST 1-5 from 9 AM – 12 PM

\$170 R / \$175 NR

**Location: Concession Pavilion
at Wentz Run Park**

**Instructor: GeoVentures
(Min. 10 / Max. 18)**



GeoVentures Breath of Wilderness Camp

If you love Zelda's Breath of the Wild game, come step into the kingdom of Hyrule set in the real outdoors. In this screen-free camp, we learn how to find useful items in nature, create signature armor and weapons, solve puzzles worthy of a shrine, and battle foes for victory in exciting games.

AGES 7-11

AUGUST 1-5 from 9 AM – 12 PM

\$170 R / \$175 NR

**Location: Picnic Pavilion
at Wentz Run Park**

**Instructor: GeoVentures
(Min. 10 / Max. 18)**



CREATIVE CONSTRUCTORS' CAMP



Campers will enjoy using their imagination and building talent to bring their creative constructions to life! Legos, Magna Tiles, Wooden Structures and Contraptions, Marble Runs, Knex, Lincoln Logs, Dominoes, Straw Towers, Crazy Forts, Wooden Blocks, and more! Come build with us! *Please bring a healthy nut-free snack and drink each day.*

AGES 4-8

AUGUST 1-5 from 9 AM – 12 PM

\$150 R / \$155 NR

**Location: WRA Clubhouse
Pavilion at Centre Square Park
Instructor: Stardust Entertainment
(Min. 10 / Max. 25)**

PRINCESS CAMP

Campers are royally invited to attend Princess Camp for a grand adventure! Our activities will include interactive games, princess story time, royal princess training, wand making, tiara crafting, princess science, and princess crafts. On the last day we will celebrate with a royal tea party, and children are invited to dress up as their favorite princess!

AGES 5-11

AUGUST 8-12 from 9 AM – 12PM

\$150 R / \$155 NR

**Location: Concession Pavilion at
Wentz Run Park**

**Instructor: Stardust Entertainment
(Min. 10 / Max. 25)**



SUPERHERO CAMP

Campers will soar into superhero camp and gear up for a spectacular adventure! Our activities will include interactive games, superhero training, obstacle courses, cape creating, superhero mask making, shield tosses, superhero science, and superhero crafts. To end the week, we will invite your camper to dress as their favorite superhero. There will also be special guest appearances by some of your favorite superheroes.

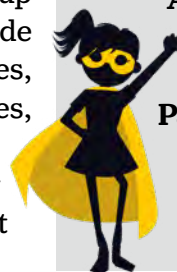
AGES 5-11

AUGUST 15-19 from 9 AM – 12PM

\$150 R / \$155 NR

**Location: Concession
Pavilion at Wentz Run Park**

**Instructor:
Stardust Entertainment
(Min. 10 / Max. 25)**



Park and Recreation Activities (continued)

**BRICKS 4 KIDZ****Brick Galaxy Far, Far Away**

A long time ago in a pile of LEGO bricks in the living room... the forces of an evil galactic empire grapple with a group of small rebels (they are mini-figures, after all!) Some are masters of a mysterious force, others have hope and determination, and others are just bumbling droids that keep popping in for comic relief. And who is that baby with the pointy green ears? May the Brick be with you, as we get ready to take over the galaxy ... the Bricks 4 Kidz way!



AGES 5-12
AUGUST 22-26
9 AM – 12 PM
\$170 R / \$175 NR
Location: Concession Pavilion at
Wentz Run Park
Instructor: Bricks 4 Kidz
 (Min. 10 / Max. 24)

YOUTH SPORT CAMPS AND CLINICS**FREE 10 & UNDER TENNIS PLAY DAY**

PennSuburban Community Tennis Association (PSCTA) will be offering a FREE play day on Saturday, April 9th. Come try tennis and meet the instructors! Pre-register online at www.whitpainrec.com for this free activity!

SATURDAY, APRIL 9
AGES 5-8 1 PM – 2 PM
AGES 9-10 2 PM – 3 PM
Location: Wentz Run Park Tennis Courts
Instructor: PSCTA
 (Min. 3 / Max. 12)

**10 & UNDER TENNIS**

Taught by tennis professionals from the PennSuburban Community Tennis Association (PSCTA). PSCTA is a local, not-for-profit organization and is registered through the United States Tennis Association.

COST: \$75 R / \$80 NR PER SET

Ages 5-6: Children will learn how to use their racquets and judge the flight path of the ball using fun activities.

Ages 7-8: Young players will move from simple rallies to actual game play on 36-foot court. Players will learn simple tactics, recovery after the hit, and shot selection.

Ages 9-10: This age group learns the basics of a rally by using forehand and backhand groundstrokes.

Participants can either bring their own equipment, or use the equipment provided.

Spring Set 1: Mondays, April 18 – May 16
Spring Set 2: Mondays, June 6 – July 11 (no class 7/4)
Summer Set: Mondays, July 25 – August 22
Fall Set: Mondays, September 12 – October 10
(visit www.whitpainrec.com for fall program times)
Ages 5-6 4:45 pm – 5:30 pm
Ages 7-8 5:30 pm – 6:15 pm
Ages 9-10 6:15 pm – 7:15 pm
Location: Wentz Run Park Tennis Courts
Instructor: PSCTA
 (Min. 3 / Max. 12)

JUNIOR TEAM TENNIS (JTT)

Classes designed to provide additional practice in a performance environment to prepare for the 2022 Junior Team Tennis season. Class elements include tennis specific conditioning, emphasis on proper stroke mechanics, fun drills, singles/doubles tactics, lots of serving and match play.



AGES 9 – 10
COST: \$75 R / \$80 NR per training session
SPRING TRAINING:
Fridays, April 22–May 20, 6:15 pm–7:15 pm
FALL TRAINING:
Fridays, Sept. 16–Oct. 14, 5:15 pm–6:15 pm
Location: Wentz Run Park Tennis Courts
Instructor: Liz Baldasano, PTR
 (Min. 3 / Max. 8)



JUNIOR TENNIS CLASSES AGES 11+

Have a question or interested in dropping-in on a class? Contact Liz Baldasano, PTR at 267-210-7632 or send an email to liz4tennis@gmail.com. *Classes are ongoing, register anytime!*

Location: Wentz Run Park Tennis Courts

Instructor: Liz Baldasano, PTR

(Min. 3 / Max. 6)



JUNIOR GROUP TENNIS LESSONS

Participants will work on serves, forehands, backhands, volleys, and overheads. Lessons include fun drills, game development, and evaluation.

AGES 11 – 14

\$75 R / \$80 NR for five 50-minute classes

SPRING CLASSES:

Tuesdays, May 10 – June 7, 5:30 pm – 6:20 pm

Thursdays, May 12 – June 9, 5:30 pm – 6:20 pm

SUMMER CLASSES:

Tuesdays, June 21 – July 19, 5:30 pm – 6:20 pm

Thursdays, June 23 – July 21, 5:30 pm – 6:20 pm

JUNIOR DRILL AND MATCH PLAY

Includes fun drills, serving practice, and singles/doubles match play. Players are separated by age and level.

INTERMEDIATE+

\$98 R / \$103 NR for four 1.5-hour classes

AGES 11-13

Spring: Fridays, May 13 – June 3, 4:30 pm – 6 pm

Summer: Fridays, June 24–July 15, 4:30 pm–6 pm

AGES 11-13, 14-17

Spring: Sundays, May 15 – June 12 (no class 5/29), 5:30 pm – 7 pm

Summer: Sundays, June 26–July 17, 5:30 pm–7 pm

INDIVIDUAL INSTRUCTION AVAILABLE BY APPOINTMENT APRIL 4 – OCT. 30.

\$53 R / \$58 NR FOR ONE-HOUR LESSON.

Learn more online www.WhitpainRec.com.

LIL SPORTS MULTI SPORTS



The goal of Lil' Sports is to teach children about sports and physical fitness in a fun, safe and positive atmosphere that will allow them to build their skills and their love for sports and physical activity. Leading by example, instructors work on a wide range of developmental skills and milestones such as gross motor skills, hand-eye coordination, being a team player, and following directions.

AGES 5-8

THURSDAYS, APRIL 21 – MAY 19

4:30 PM – 5:15 PM

\$75 R / \$80 NR

Location: Wentz Run Park

Multipurpose Field

Instructor: Lil Sports

(Min. 5 / Max. 20)

USSI MULTI SPORTS



Multi Sports Camp gives players the opportunity to experience a variety of sports throughout the program including soccer, basketball, flag football, cricket, handball, volleyball, and more! Players will work on developing their skills in each sport before participating in small tournament-style scrimmages.

WEEK 1: JULY 11 – 15

WEEK 2: JULY 25 – 29

WEEK 3: AUGUST 8 – 12

AGES 5 – 11

9 AM – 12 PM

\$185 R / \$190 NR

Location: Wentz Run Park

Multipurpose Field

Instructor: US Sports Institute

(Min. 16 / Max. 24)

Park and Recreation Activities (continued)

**INSTRUCTOR FOR ALL PROGRAMS: i9 SPORTS****i9 Sports Basketball**

This camp will focus on learning new skills, games, strategies, and good sportsmanship. Campers will participate in a variety of awesome games and activities which will help them develop the fundamentals of the game of basketball! All campers will receive an i9 Sports participation shirt during the first session, snacks, and trophies will be given out on the last day of camp during our end of week celebration.

AGES 5-12**SPRING: MONDAYS, APRIL 11 – MAY 16****5:30 PM – 6:30 PM****\$155 R / \$160 NR****SUMMER: AUGUST 1-5, 9 AM – 12 PM****\$145 R / \$150 NR****Location: Wentz Run Park Basketball Courts***(Min. 9 / Max. 16)***i9 Sports Sand Volleyball Camp**

i9 Sports Volleyball Camp will help participants gain an understanding and appreciation for playing the game “the right way”. The schematic curriculum teaches the fundamentals of serving, passing, setting, blocking, digging, game strategy and teamwork in a fun, positive environment by i9 Sports Certified Staff. All athletes, regardless of skill level, will learn new volleyball skills along with valuable sportsmanship lessons such as respect, teamwork, and responsibility.

AGES 7 – 14**JULY 18-22 from 9 AM – 12 PM****\$145 R / \$150 NR****Location: Wentz Run Park Sand Volleyball Court***(Min. 9 / Max. 16)***i9 Sports Lacrosse Camp**

A sport that is lightning fast, high-energy, and fun for both boys and girls! This 3 on 3 lacrosse program is fast-paced, non-contact, and designed to allow kids to develop and refine their lacrosse skills. With limited equipment requirements (no helmets or pads), the i9 Sports kids lacrosse format is the perfect way to teach players the fundamentals of lacrosse while developing their hand-eye coordination, agility, and overall athletic skills.

AGES 7 – 12**JULY 25-29 FROM 9 AM – 12 PM****\$145 R / \$150 NR****Location: Centre Square Park***(Min. 9 / Max. 16)***USSI SOCCER CAMP**

Players receive soccer instruction at a level that will both challenge them and ensure they have a fantastic experience at camp. Our professional, qualified coaches will cover different topics and themes each day including dribbling, passing, shooting, defense, and more.

AGES 5 – 11**JULY 18 – 22 FROM 9 AM – 12 PM****\$185 R / \$190 NR****Location: Wentz Run Park Multipurpose Field****Instructor: US Sports Institute***(Min. 16 / Max. 24)***TOTAL SOCCER**

Players will enjoy a 5-day series of sessions that focus on the technique and training methods used by professional players. Each camp will have the direction of a senior staff member whose entire focus will be pushing fast tempo foot skill exercises to improve each players' speed of play! Each camper receives a shirt.

AUGUST 15-19**Ages 5-6 9 am - 12 pm****\$170 R / \$175 NR****Ages 7-14 9 am-12 pm or 9 am-3 pm****\$170 R / \$175 NR (half day) or \$275 R / \$280 NR (full day)**

Players are assigned groups based on age and ability levels. Players will typically train with other players within two years of their age.

Location: Wentz Run Park Multipurpose Field**Instructor: Total Soccer Coaches***(Min. 6 / Max. 20)*



DR. STUART MALCOLM SOCCER CAMP

2022 Soccer Camps
Center Square Park, Whitpain Twp
For Boys & Girls Ages 5-16

Week 1: July 18-22

Week 2: July 25-29

For More Information or To Register, visit:

StuartMalcolmSoccerCamp.com

Morning Camp: 8:30am-11:30am

\$135 before April 1st, \$140 after April 1st

Full Day Camp: 8:30am-2:00pm

\$190 before April 1st, \$200 after April 1st



Keeping the soccer experience in your community

ADULT FITNESS PROGRAMS



ZUMBA

Zumba incorporates traditional dances into a fun group exercise! Burn up 400 calories during class and improve your health, mood, and coordination. Great way to lose weight and stay fit!

AGES 18+

TUESDAYS, APRIL 12 – MAY 17

TUESDAYS, JUNE 7 – JULY 19 (no class 7/5)

TUESDAYS, AUG. 9 – SEPT. 20 (no class 9/6)
7 PM – 8 PM

SATURDAYS, APRIL 9 – MAY 14

SATURDAYS, JUNE 11 – JULY 23 (no class 7/2)

SATURDAYS, AUG. 13 – SEPT. 24 (no class 9/3)
10:30 AM – 11:30 AM

COST: \$50 R / \$55 NR

Location: Prophecy Creek Park

Instructor: Jacqueline Brooks

(Min. 6 / Max. 20)



HATHA YOGA

Hatha yoga provides many health benefits including increased flexibility and strength. Through the process of creating a mind/body connection, students are able to honor the body, prevent injury, heal, and create a sense of calm. This program is open to all levels, including beginners. Outdoor classes will be over Zoom in the case of inclement weather.

WEDNESDAYS, MARCH 9 – APRIL 13 (indoors)
7:30 PM – 8:30 PM

SATURDAYS, APRIL 16 – MAY 21 (outdoors)
9 AM – 10 AM

WEDNESDAYS, APRIL 27 – JUNE 1 (outdoors)
6:30 PM – 7:30 PM

COST: \$55 R / \$60 NR

Location: Prophecy Creek Park

Instructor: Karen Strawhacker

(Min. 6 / Max. 15)

WHITPAIN WALKERS

The Whitpain Walkers is a weekly walking club that meets at various walking trails in the area. This program is ideal for individuals who want to walk with others, discover great walking trails nearby, want to begin and/or continue a walking routine, or are just looking for something new to do during the day! The walking club is a non-competitive group that encourages healthy lifestyles, exercise, being in nature, and socializing with others.



AGES: 18+

WEDNESDAYS and FRIDAYS, APRIL 13 – JUNE 3

TIME: 9 AM

ANNUAL FEE: \$15 R / \$20 NR

Locations: Various ~

visit www.whitpainrec.com for complete schedule



Park and Recreation Activities (continued)



36TH ANNUAL MONTGOMERY COUNTY SENIOR GAMES

May 9-13



The Montgomery County Senior Games (MCSG) combine sports and recreation with fellowship among everyone involved. Events are held at various locations throughout Montgomery County, including Montgomery County Community College, Wentz Run Park, and Mermaid Lake Park.

EVENTS INCLUDE:

Archery • Badminton • Basketball (foul shot & hot shot)
Billiards • Bocce • Bowling • Cornhole • Darts
Football & Softball Throw • Golf • Horseshoes
Orienteering • Par3 and Mini Golf • Pickleball
Running • Shuffleboard • Stationary Bike
Swimming • Table Tennis • Tennis • Walking

Registrants must be 50 years or older by 12/31/22 to be eligible to participate. Learn more and register online at www.MontcoSeniorGames.com! **FREE** health and wellness expo on Friday, May 13, 8:30 am – 11:00 am, in MCCC Health Sciences Center!

A DELICIOUS WAY TO MAKE A DIFFERENCE

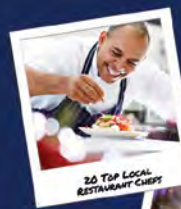
You're Invited!

WEDNESDAY

MAY 18

5:00 PM

THE MANOR HOUSE AT
PROPHECY CREEK PARK



TICKETS: \$75
Get Your Tickets Today
CHEFSOFTHEBURBS.COM

Proceeds from Chefs of the Burbs benefit local kids and community through our beneficiaries: Wissahickon Valley Boys and Girls Club, Interfaith Housing Alliance, Whitpain Township Parks and Recreation Summer Programs, Do Better 4 Steve, Rotoplast and the Rotary Club of Blue Bell Charitable Foundation.

ADULT TENNIS Ages 18+

Contact instructor prior to dropping in to ensure space is available.

Have a question or interested in dropping-in on a class? Contact Liz Baldasano, PTR at 267-210-7632 or send an email to liz4tennis@gmail.com.

Location:

Wentz Run Park Tennis Courts
Instructor: Liz Baldasano, PTR

WORKSHOPS

Stroke production, tactical priorities, singles/doubles strategy, fun drills, and match play

\$98 R / \$103 NR for four sessions,

\$26 R / \$29 NR drop-in fee

Intermediate Workshop Level I (2.5-3.0)

Wednesdays, May 25 – July 27, 8:30 am – 10 am

Intermediate Workshop Level II (3.5+)

Sundays, May 22 – July 31, 8:30 am – 10 am

TENNIS FOR FITNESS™

Focus on movement, go at your own pace,
light stretching and conditioning

Mondays, May 23–July 25, 7:30 pm–8:20 pm

Thursdays, May 26–July 28, 6:30 pm–7:20 pm

Saturdays, June 4–June 25, 8:30 am–9:20 am

\$75 R / \$80 NR for five classes,

\$16 R / \$19 NR drop-in fee

ROUND ROBIN

Up to three timed matches among participants – singles and/or doubles. Balls provided.

\$65 R / \$70 NR for UNLIMITED PASS; \$10 R / \$12 NR drop-in fee for single play

INTERMEDIATE LEVEL I (2.0-3.0+): Fridays, May 20–July 29 / Sept. 9–Oct. 14, 8:30 am–10 am

INTERMEDIATE LEVEL II (3.5+): Tuesdays, May 24–July 26 / Sept. 6–Sept. 20, 6:30 pm–8 pm

INDIVIDUAL INSTRUCTION AVAILABLE BY APPOINTMENT APRIL 4 – OCT. 30.

\$53 R / \$58 NR FOR ONE-HOUR LESSON.

Learn more online www.WhitpainRec.com.



Retirement IS ABOUT Balance



Russell R. Valante
Executive Vice President/
Investments

Retirement involves striking a delicate balance between cash flow, spending, investment risks, lifestyle needs, and many other factors. If your retirement is feeling off-balance, it's time to get the advice you need.

Russell Valante of Janney Montgomery Scott has been helping people reach their retirement goals for nearly 20 years. He can provide a thorough analysis of your unique retirement needs, help you set goals, and create a plan to help you stay on balance to meet them. Contact Russell today to discuss how he can help you find the right balance for your retirement.

Janney Montgomery Scott LLC
1767 Sentry Parkway W, Suite 110, Blue Bell, PA 19422-2217
215.619.3920 toll-free: 888.567.0022
rvalante@janney.com www.RussellValante.com



WHITPAIN DOG PARK

WHITPAIN DOG PARK MEMBERSHIP

For the safety, accountability, and enjoyment of users, Whitpain Dog Park is for registered members only. A key fob or access code is required to enter the park.

Annual Membership Fees

- Whitpain Township Resident: \$35 for 2 dogs + \$15/additional dog
- Non-Resident: \$50 for 2 dogs + \$20/additional dog
- Memberships expire on 12/31

Required Documents

- Current Vaccination Records (*Rabies, Bordetella, Distemper*)
- Valid PA Dog License (*lifetime or 2022*)
- Registration Form and Waiver (*if you didn't pre-register and pay online*)
- Orientation Quiz (*new members only*)

How to Register

Pay membership dues online! Memberships are good through the end of 2022!



DOGS IN PARKS

Dogs must be on leash (not exceeding 6 feet) and always under the owner's control. Retractable leashes are not permitted. Dogs are not permitted: within 20 ft. of athletic fields/courts; within 50 ft. of playgrounds; within the 5-acre premise of the Manor House. Dogs must not be allowed to be a nuisance or potential hazard to other park users, or to damage Township property. Leashed dogs are permitted in all parks, except for Stony Creek Sports Park. Owners must clean up after their pets and dispose of waste in a responsible manner.

NEW MEMBERS: After you pay online at www.whitpainrec.com, please email or fax over required paperwork (orientation quiz, vet records, and county license). The fax number is 610-277-2209. Scan and email paperwork to park&rec@whitpaintownship.org. Once we receive your information, we will activate a key fob for you and your 5-digit access code you provide when you register. We will notify you when your fob is ready to be picked up and your access code is active.

RENEWING MEMBERS: Pay online to renew membership. Please send updated vaccination records and a 2022 dog license to park&rec@whitpaintownship.org or fax info to 610-277-2209. You do NOT need to complete the orientation quiz. You can also leave a check (made out to Whitpain Township) and paperwork in the night drop box in the Township Building vestibule.



SUPPORT THE DOG PARK

Purchase a brick (or two!) for the walkway leading into the Dog Park. Only \$100 per brick! Engraved messages can be as simple as a family or business name, or in memory of a beloved family member (included four-legged family members). Visit www.whitpainrec.com for more info.

WHITPAIN TOWNSHIP
BRICK CAMPAIGN
www.bricksrus.com

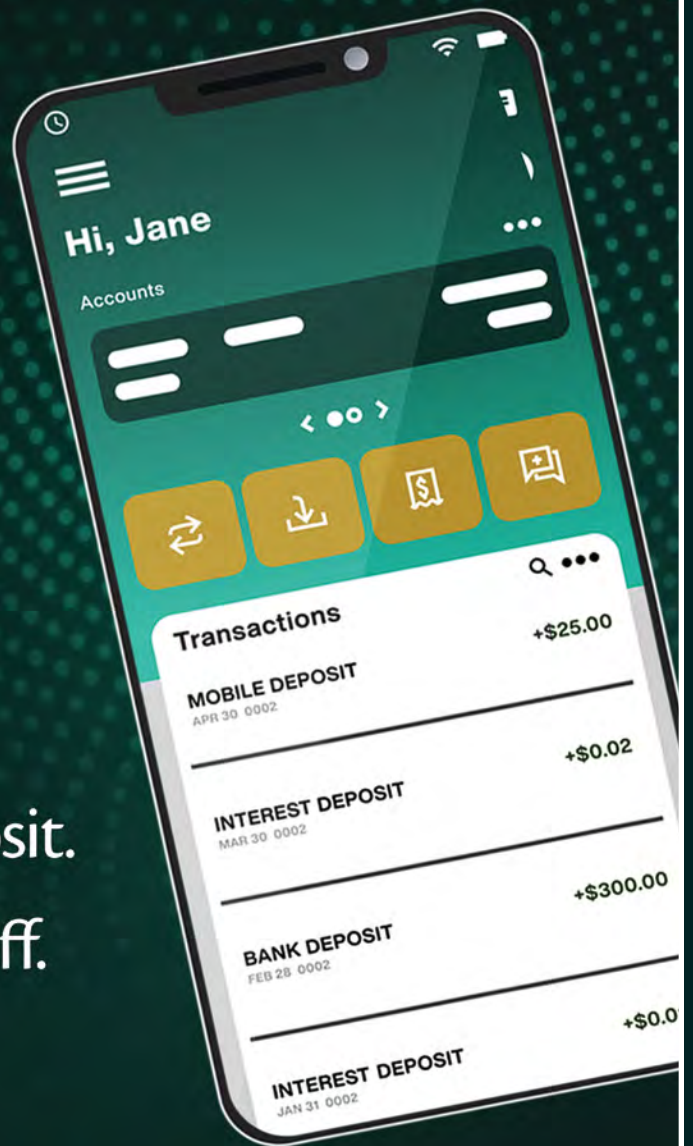
THANK YOU 2021 SPONSORS OF THE WHITPAIN COMMUNITY FESTIVAL AND DOG PARK!

Special thank you to Frank and Paige Engro for your continued support of the Parks and Recreation Department



Fully Local. Totally Mobile.

Send Money Fast.
Mobile Check Deposit.
Lost Card? Turn it Off.



TOMPKINS 
BANKING | INSURANCE | WEALTH

Investments and Insurance products are not FDIC insured, not Bank guaranteed, and may lose value.

MEMBER FDIC



THE MAGAGNA HOME TEAM

RE/MAX[®]

SERVICES



David C. Magagna
610-213-2340
REALTOR®
dmagagna@remax.net



Each office
Independently
Owned and
Operated



Tori Magagna
610-283-1968
REALTOR®
torim@remax.net

How to Get Top Dollar Selling Your Home ...

If you're thinking about selling your home soon, request our Free Consumer Guide, "7 Insider Tips to Net More Money Selling Your Own Home." this report will be your secret weapon to maximize the net profits from the sale of your home. You can get a free copy by calling!

794 Penllyn Blue Bell Pike, Suite 120 | Blue Bell, PA 19422

Office 215-641-2500 | www.TheMagagnaHomeTeam.com

Shaeff-Myers Funeral Home



Richard E. Myers, F.D.

Robert E. Myers, Supervisor

145 Tennis Avenue, Ambler, PA

215-646-0595

Elliott Greenleaf

Attorneys at Law

925 Harvest Drive, Suite 300, Blue Bell, PA 19422

215-977-1000 / www.elliottgreenleaf.com / follow on Twitter@ElliottAttys

Blue Bell / Harrisburg / Scranton / Wilkes-Barre / Wilmington

Proudly Serving Whitpain Township for 30 Years!

Best Chinese Food In Blue Bell



1301 Skippack Pike | Center Square, PA 19422

Phone: 610-292-8881 | Fax: 610-292-0618

www.goldenseabluebell.com



Voted Best Chinese Restaurant by *The Reporter* and *The Times Herald*!





960 Wentz Road
Blue Bell, PA 19422

Presort Standard
U.S. Postage
PAID
Permit No. 550
Lehigh Valley, PA



hometownpress

This Community Newsletter is produced for
Whitpain Township by Hometown Press
215.257.1500 • All rights reserved®

To Place An Ad Call Mr. Kim Kriebel At Hometown Press • 267-371-2833

\$5 off
your purchase
of \$30 or more
P.J. WHELIHAN'S
PUB + RESTAURANT
www.PJsPub.com
PRESENT OFFER AT TIME OF PURCHASE
799 Dekalb Pike, Blue Bell

over 20 Craft Beers On Tap!
P.J. WHELIHAN'S
PUB + RESTAURANT
www.PJsPub.com

Casual Parties

**Awesome
Outdoor Patio**

Convenient Curbside Pickup
Call Today 610-272-8919

Realize Greater Heating & Air Conditioning Efficiency...

AND SAVE UP TO 40%

Family Owned & Operated Since 1973



**Heating &
Air Conditioning**

**Installations • Sales • Service
Maintenance Contracts**



Free Estimates On New Installs

**READER'S
CHOICE**
Best HVAC
Contractor
15 Years
in a Row

**\$300
off**

**ANY HEATING &
A.C./HEAT PUMP**

Combined System Installed
Mention This Ad

Heating • A/C • Heat Pumps

Not good with any other offers
One coupon per job
Coupon valid only at time of sale

800 Hagey Rd, Souderton • Fast Emergency Service
215-799-0515 • TOLL FREE 1-800-564-3382 • www.cc-hvac.com

Edward Jones

> edwardjones.com | Member SIPC



**There's no time like now
to plan your future.**



Elena M Sickles, CFP®
Financial Advisor
1061 Dekalb Pike Suite 101
Blue Bell, PA 19422
610-279-4286

MKT-5894K-A-A1